



Westpark Middle School School Results Report 2008/2009

3310-55 Avenue Red Deer AB T4N 4N1
Phone: 403-347-8911 Fax: 403-343-2792

October 2009 Accountability Pillar Overall Summary (OPTIONAL)

Goal	Measure Category	Measure Category Evaluation	Measure	Westpark Middle School			Alberta			Measure Evaluation		
				Current Result	Prev Year Result	Prev 3 yr Average	Current Result	Prev Year Result	Prev 3 Yr Average	Achievement	Improvement	Overall
Goal 1: High Quality Learning Opportunities for All	Safe and Caring Schools	Issue	Safe and Caring	82.6	89.2	89.9	86.9	85.1	84.6	Intermediate	Declined	Issue
	Student Learning Opportunities	n/a	Program of Studies	86.7	90.1	90.1	80.3	79.4	78.7	Very High	Maintained	Excellent
			Education Quality	87.3	90.4	92.0	89.3	88.2	87.8	High	Declined	Acceptable
			Drop Out Rate	*	12.3	6.1	4.8	5.0	4.9	*	*	*
			High School Completion Rate (3 yr)	n/a	n/a	n/a	70.7	71.0	70.6	n/a	n/a	n/a
Goal 2: Excellence in Learner Outcomes	Student Learning Achievement (Grades K-9)	Acceptable	PAT: Acceptable	75.4	74.1	72.0	76.8	75.3	75.6	Intermediate	Maintained	Acceptable
			PAT: Excellence	17.0	11.6	12.5	19.2	18.3	18.3	Intermediate	Maintained	Acceptable
	Student Learning Achievement (Grades 10-12)	n/a	Diploma: Acceptable	n/a	n/a	n/a	84.4	84.4	84.5	n/a	n/a	n/a
			Diploma: Excellence	n/a	n/a	n/a	19.1	19.4	20.3	n/a	n/a	n/a
			Diploma Exam Participation Rate (4+ Exams)	n/a	n/a	n/a	53.3	53.6	53.6	n/a	n/a	n/a
			Rutherford Scholarship Eligibility Rate (Revised)	n/a	n/a	n/a	57.3	56.8	55.8	n/a	n/a	n/a
	Preparation for Lifelong Learning, World of Work, Citizenship	n/a	Transition Rate (6 yr)	n/a	n/a	n/a	60.7	60.3	59.1	n/a	n/a	n/a
Work Preparation			93.2	87.1	88.6	79.6	80.1	78.1	Very High	Maintained	Excellent	
			Citizenship	76.2	79.4	83.0	80.3	77.9	77.1	Intermediate	Declined	Issue
Goal 4: Highly Responsive and Responsible Jurisdiction (Ministry)	Parental Involvement	Issue	Parental Involvement	74.1	82.0	82.2	80.1	78.2	77.9	Low	Maintained	Issue
	Continuous Improvement	Excellent	School Improvement	81.5	81.9	84.5	79.4	77.0	76.7	Very High	Maintained	Excellent

Notes:

- 1) Student Learning Achievement: PAT Values reported are weighted averages of PAT Acceptable and PAT Excellence results. Courses included: ELA (Grades 3, 6, 9), Math (Grades 3, 6, 9), Science (Grades 6, 9), French Language Arts (Grades 6, 9), Français (Grades 6, 9).
- 2) Student Learning Achievement: Diploma Exam Values reported are averages of Diploma Acceptable and Diploma Excellence results, weighted by the number of students enrolled in each course.
- 3) Overall evaluations can only be calculated if both improvement and achievement evaluations are available.
- 4) Data values have been suppressed where the number of students is less than 6. Suppression is marked with an asterisk (*).

Goal One: High Quality Learning Opportunities for All

Outcome: Schools provide a safe and caring environment.

Performance Measure		Results (in percentages)					
		2005	2006	2007	2008	2009	
Percentage of teacher, parent and student agreement that: students are safe at school, are learning the importance of caring for others, are learning respect for others and are treated fairly in school.	Overall (required)	School	84.0	90.1	90.3	89.2	82.6
		Authority	82.1	84.1	85.2	87.4	86.6
		Province	83.1	84.4	84.2	85.1	86.9
	Teacher (optional)	School	97.6	97.6	98.8	96.3	96.9
		Authority	93.0	94.2	93.5	94.9	94.4
		Province	92.3	92.8	92.6	93.1	93.8
	Parent (optional)	School	73.0	91.4	85.3	86.2	81.7
		Authority	80.0	79.6	83.1	85.8	85.4
		Province	79.9	82.1	81.7	83.2	85.3
	Student (optional)	School	81.3	81.3	86.9	85.2	69.2
		Authority	73.3	78.4	78.9	81.6	80.1
		Province	77.2	78.4	78.5	79.1	81.7

Comment on Results

(an assessment of progress in relation to past performance)

*Parents and students were concerned about bomb threats that occurred last year and these results are possibly due to student and parent concerns. These threats were taken very seriously, as are any issues that threaten the safety of our students.

*Students continue to receive character education, drug awareness presentations, bullying presentations, etc. by staff and outside agencies.

*We have established a threat assessment team and both administrators and the school counsellor are qualified to do threat assessments.

*We work with Family School Wellness, our school RCMP resource officer, and the Aboriginal School Wellness people to identify students at risk and find appropriate interventions for them.

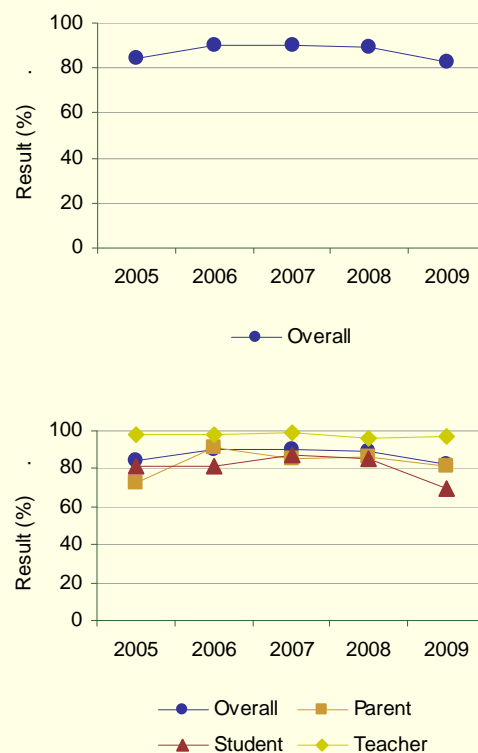
*Students who are perceived as bullies are watched carefully and monitored closely by administrators, teachers, and the counsellor.

*Parents are involved in any decisions made concerning their children.

*We have hired additional college supervisors for lunch recess.

*We have a tutor/mentorship program in place for at-risk grade six students.

Graph of Overall School Results (optional)



Note: Data values have been suppressed where the number of respondents is less than 6. Suppression is marked with an asterisk (*).

Outcome: The education system meets the needs of all K–12 students, society and the economy.

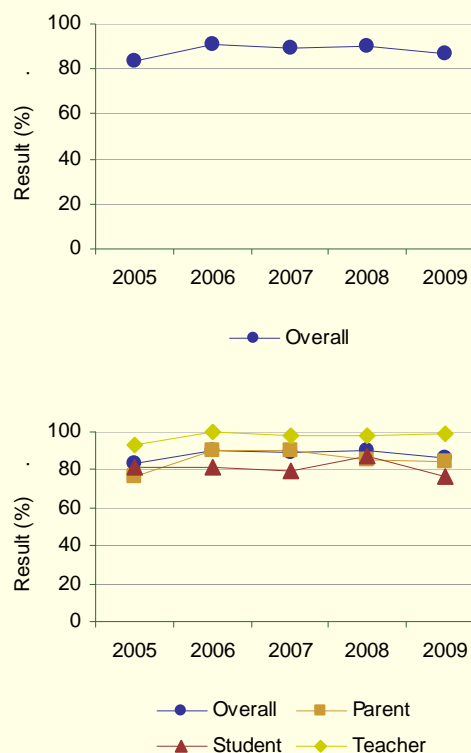
Performance Measure			Results (in percentages)				
			2005	2006	2007	2008	2009
Percentage of teachers, parents and students satisfied with the opportunity for students to receive a broad program of studies including fine arts, career, technology, and health and physical education.	Overall (required)	School	83.6	90.6	89.5	90.1	86.7
		Authority	82.8	84.9	85.6	85.5	85.8
		Province	76.7	78.1	78.5	79.4	80.3
	Teacher (optional)	School	93.4	100.0	98.5	97.7	99.0
		Authority	91.4	92.9	93.4	92.3	90.7
		Province	83.6	85.2	85.7	86.4	86.8
	Parent (optional)	School	76.4	90.5	90.3	85.5	84.2
		Authority	83.8	84.8	84.1	83.2	85.5
		Province	75.0	76.6	76.9	77.6	78.7
	Student (optional)	School	81.1	81.3	79.7	87.2	76.7
		Authority	73.1	76.9	79.4	81.0	81.1
		Province	71.5	72.6	72.9	74.1	75.3

Comment on Results

(an assessment of progress in relation to past performance)

*We received an overall evaluation of excellent on this satisfaction measure.
 *We have continued to improve our Daily Physical Activity Programs, for students, by purchasing and installing a climbing wall and continuing to look for other ideas to enhance this program.
 *We now have Smart Technology in almost every classroom.
 *Teachers are involved in ongoing professional development in best teaching practices, technology, and differentiated instruction.
 *We continue to have a thriving intramural program, as well as junior and senior sports teams.
 *We maintain a wide range of options for students to participate in and continue to develop new options that will be of interest to students.
 *We have moved our band practices to lunch hours in the hope that more students will stay involved in the program.

Graph of Overall School Results (optional)



Note: Data values have been suppressed where the number of respondents is less than 6. Suppression is marked with an asterisk (*).

Outcome: *The education system meets the needs of all K–12 students, society and the economy. (continued)*

Performance Measure		Results (in percentages)					
		2005	2006	2007	2008	2009	
Percentage of teachers, parents and students satisfied with the overall quality of basic education.	Overall (required)	School	88.3	93.6	91.9	90.4	87.3
		Authority	88.5	89.3	90.2	90.5	89.4
		Province	86.1	87.7	87.6	88.2	89.3
	Teacher (optional)	School	96.1	100.0	98.0	96.9	98.7
		Authority	96.4	96.9	96.6	96.9	96.3
		Province	93.9	94.8	94.7	94.9	95.3
	Parent (optional)	School	80.1	94.4	87.2	84.6	86.2
		Authority	84.7	84.3	87.4	86.3	84.0
		Province	78.9	81.6	81.8	83.0	84.4
	Student (optional)	School	88.8	86.3	90.4	89.8	76.9
		Authority	84.6	86.8	86.6	88.4	87.9
		Province	85.6	86.6	86.4	86.6	88.3

Comment on Results

(an assessment of progress in relation to past performance)

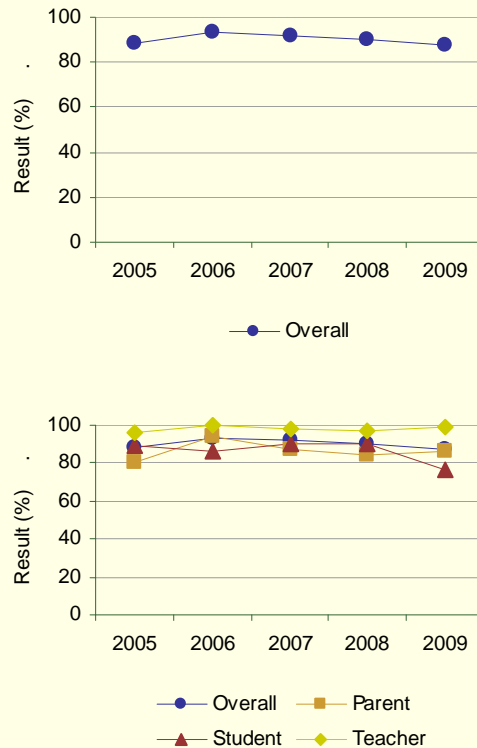
*Our results on this measure are at an acceptable level but have declined due to poor student results, even though parent and teacher results have improved.

*We continue to utilize our budget to create small class sizes, have grade six students with fewer core teachers, provide tutorial support, have developed a tutorial/mentorship partnership with the college and support continued professional development for all staff members.

*Staff are focusing on professional development in the areas of Smart Technology, best teaching practices, and differentiated instruction to help improve the quality of basic education for all of our students.

*We are working with Aboriginal Frontline to assist in the delivery of many areas of our curriculum.

Graph of Overall School Results (optional)



Note: Data values have been suppressed where the number of respondents is less than 6. Suppression is marked with an asterisk (*).

**Outcome: The education system meets the needs of all K–12 students, society and the economy. (continued)*

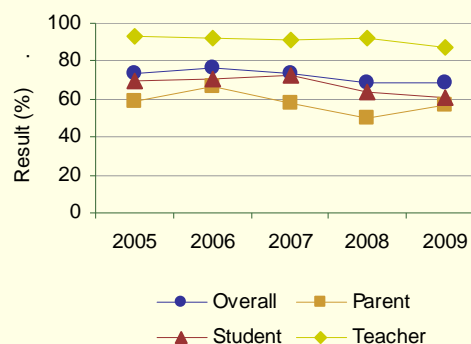
Performance Measure			Results (in percentages)				
			2005	2006	2007	2008	2009
Percentage of teacher, parent and student satisfaction with the accessibility, effectiveness and efficiency of programs and services for students in their community.	Overall (required)	School	73.6	76.6	73.7	68.6	68.3
		Authority	68.6	71.7	70.1	70.0	69.9
		Province	67.2	68.5	68.2	69.2	70.3
	Teacher (optional)	School	93.1	92.2	91.4	92.6	87.0
		Authority	75.2	77.4	75.9	75.5	74.7
		Province	70.0	71.5	72.0	73.4	74.5
	Parent (optional)	School	58.4	67.1	57.5	49.7	56.7
		Authority	57.2	62.0	59.7	56.9	57.1
		Province	54.9	56.9	55.9	56.5	58.1
	Student (optional)	School	69.2	70.6	72.2	63.7	61.1
		Authority	73.6	75.6	74.6	77.8	78.0
		Province	76.7	77.1	76.8	77.7	78.4

Comment on Results

(an assessment of progress in relation to past performance)

*The results for this performance measure are low and appear to have been low for all respondents.
 *The teachers' result has declined but remains significantly higher than results for other respondents.
 *Students are unhappy with the accessibility, effectiveness, and efficiency of programs and services. The satisfaction of parent has improved by about 7 percent.
 *We are participating in a wrap around service study this year, with another school in our district, and Central Services, through the University of Alberta and are hoping to eventually implement a service for our parents that coordinates some of the agencies that we access with the school district.
 *We will continue to identify students who are at risk and utilize the district services, as well as outside agencies to access services and supports for our students.

Graph of Overall School Results (optional)



Note: Data values have been suppressed where the number of respondents is less than 6. Suppression is marked with an asterisk (*).

Outcome: Children and youth at risk have their needs addressed through effective programs and supports.

Performance Measure		Results (in percentages)				
		2004	2005	2006	2007	2008
Drop Out Rate - annual dropout rate of students aged 14 to 18 (required).	School	0.0	0.0	*	12.3	*
	Authority	6.3	5.6	6.0	6.3	4.6
	Province	5.3	5.0	4.7	5.0	4.8
Returning Rate (optional)	School	n/a	n/a	n/a	*	0.0
	Authority	20.3	21.9	19.8	22.5	15.5
	Province	23.0	21.3	21.2	21.3	19.8

Comment on results

(an assessment of progress in relation to past performance)

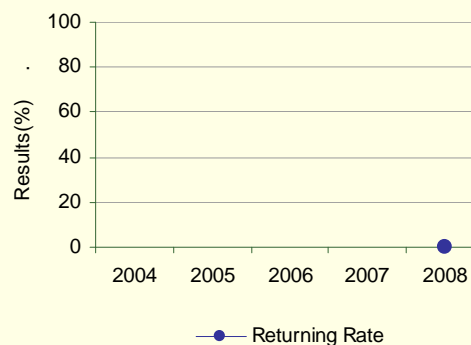
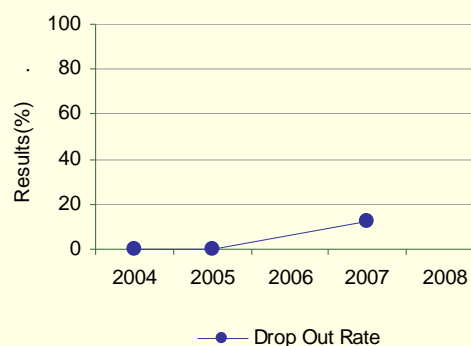
*We do not have results for 2008 but there are several things we are trying to do at the middle school level to assist with identifying students at risk and providing them with effective programs.

*We have implemented a tutoring/mentorship program for grade six students, who we feel are at risk academically. Students from Red Deer College come in twice a week to work with each student one on one. They will work in academic areas with the students, as needed, as well as build relationships with them.

*We continue to identify and intervene with students who are at risk. We provide in-school tutorial support and refer students and families to outside agencies such as Family School Wellness, Mental Health, REACH, and the Aboriginal Frontline Agency as needed.

*We have had students visit HHHS RAP to see what that is like and hopefully, see that there are some alternative programs in the future for them.

Graph of Overall School Results (optional)



Note: Data values have been suppressed where the number of respondents is less than 6. Suppression is marked with an asterisk (*).

Outcome: *Children and youth at risk have their needs addressed through effective programs and supports. (continued)*

Performance Measure			Results (in percentages)				
			2005	2006	2007	2008	2009
Percentage of teacher, parent and student agreement that programs for children at risk are easy to access and timely.	Overall (required)	School	84.0	88.1	89.8	89.4	85.8
		Authority	80.7	83.9	82.9	83.2	83.5
		Province	76.9	78.6	78.3	79.5	81.4
	Teacher (optional)	School	100.0	100.0	100.0	97.9	100.0
		Authority	94.2	96.5	93.6	93.1	95.0
		Province	90.6	91.6	91.2	91.9	92.5
	Parent (optional)	School	65.6	81.0	81.4	79.0	81.2
		Authority	72.1	76.2	76.1	74.1	73.7
		Province	63.8	67.0	66.8	68.5	71.3
	Student (optional)	School	86.5	83.3	88.1	91.3	76.4
		Authority	75.7	79.2	79.1	82.5	81.9
		Province	76.1	77.1	77.0	78.0	80.3

Comment on results

(an assessment of progress in relation to past performance)

*This performance measure has 100% agreement by teachers that programs for children at risk are easy to identify. Parents are 81% in agreement but students less so at 76%.

*We do provide programs for students such as tutorial that they are able to access as an option.

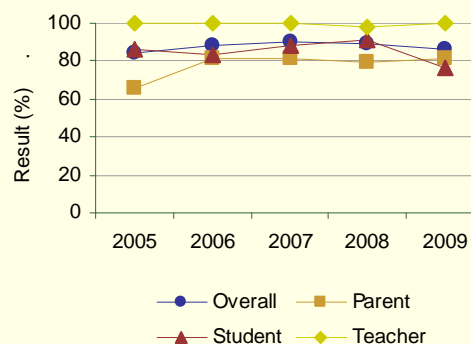
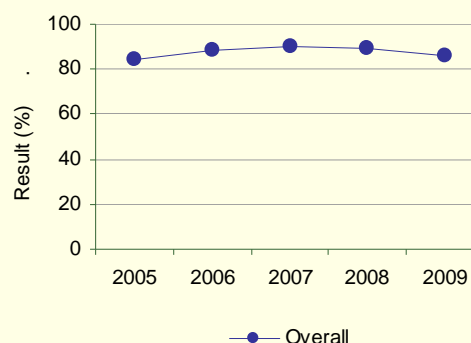
*We make timely referrals to outside agencies and feel that anything urgent is followed through with quickly. Our outside agencies such as Family School Wellness and the Aboriginal Frontline Agency are responsive, as is our School Resource Officer.

*We have in-house testing to determine if a student should be referred for further testing by the district. We feel this is a positive and timely process.

*The counselor and administration meet frequently, as do the grade level teams to discuss students who are at risk and make recommendations accordingly.

*Counselling is available with Mr. Aleman at the school level.

Graph of Overall School Results (optional)



Note: Data values have been suppressed where the number of respondents is less than 6. Suppression is marked with an asterisk (*).

Goal Two: Excellence in Student Learning Outcomes

Outcome: Students demonstrate high standards in learner outcomes.

Performance Measure		Results (in percentages)**										
PAT Results by Number Enrolled - percentages of students who achieve the acceptable standard and the percentages who achieve the standard of excellence on Grades 3, 6 and 9 Provincial Achievement Tests (cohort results).		2005		2006		2007		2008		2009		
		A	E	A	E	A	E	A	E	A	E	
Grade 6	English Language Arts 6	School	83.2	9.5	69.2	5.8	75.6	12.2	76.4	12.7	77.4	11.3
		Authority	78.0	12.0	76.3	11.7	78.8	14.9	78.6	19.0	80.2	18.0
		Province	77.3	15.5	79.0	15.9	80.3	19.8	81.1	21.0	81.8	18.9
	Mathematics 6	School	75.8	17.9	60.6	9.6	67.9	6.1	67.3	7.3	74.5	10.4
		Authority	76.2	15.1	71.4	12.7	69.8	9.5	68.8	13.6	77.7	11.5
		Province	78.2	18.1	75.2	15.6	74.0	14.5	74.6	15.9	76.6	16.8
	Science 6	School	85.3	17.9	76.0	24.0	76.3	19.8	78.7	14.8	74.3	29.5
		Authority	80.6	23.7	77.3	26.2	77.2	25.3	74.8	24.3	77.5	24.5
		Province	79.8	26.0	78.1	27.7	75.2	26.6	74.8	24.1	76.5	24.8
	Social Studies 6	School	82.1	22.1	75.0	15.4	75.6	15.3	82.4	16.7	n/a	n/a
		Authority	77.4	19.0	80.9	23.7	76.6	21.8	78.8	23.7	n/a	n/a
		Province	78.4	21.5	78.6	22.9	77.4	22.3	77.9	23.8	84.8	27.6

		Results (in percentages)									
		2005		2006		2007		2008		2009	
		A	E	A	E	A	E	A	E	A	E
Overall	School	81.4	15.1	68.6	13.1	73.3	12.7	74.1	11.6	75.4	17.0
	Authority	73.1	14.3	74.3	14.8	74.4	15.1	73.3	15.5	77.2	18.3
	Province	76.4	18.4	76.0	17.9	75.5	18.6	75.3	18.3	76.8	19.2

Note: Data values have been suppressed where the number of students is less than 6. Suppression is marked with an asterisk (*).

Aggregated PAT results are based upon a weighted average of Acceptable or Excellence percent meeting standards. The weights are the number of students in the cohort for the course.

Student Learning Achievement: PAT Values reported are weighted averages of PAT Acceptable and PAT Excellence results. Courses included: ELA (Grades 3, 6, 9), Math (Grades 3, 6, 9), Science (Grades 6, 9), French Language Arts (Grades 6, 9), Français (Grades 6, 9).

** "A" = Acceptable; "E" = Excellence — the percentages achieving the acceptable standard include the percentages achieving the standard of excellence.

Comment on Results

(an assessment of progress in relation to past performance)

*In general our results on Provincial Achievement tests have been improving since the lowest result in 2006. There is still room for improvement and we are striving to achieve this.

*Our acceptable standard in science has been rated acceptable but our standard of excellence is an issue. We are looking at ways to move more students into the category for excellence.

*In mathematics we have seen the percentage of students achieving the acceptable standard improve from 67.3 to 74.5. There is a need for greater improvement, as it is an issue. Our standard of excellence is also a concern.

*In language arts we have slowly been improving each year, since 2006, but there is still an issue with our results. Our standard of excellence is acceptable but as with all categories, we would like to see our results improve.

*Grade six teachers are given an opportunity to analyze the PAT results, as a team, from the previous year.

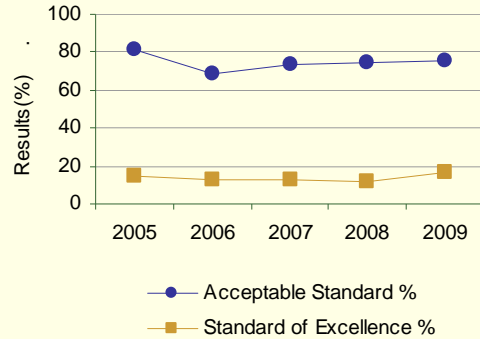
*We are focusing on grade six students, who are at risk, by placing them with college tutors/mentors for extra, individualized attention during their twice a week reading periods.

*We also have a tutorial program for students who struggle in the classroom that provides small group assistance.

*Our grade six students see fewer core teachers than other grade levels to allow for some consistency.

*Our professional development is focusing on instructional intelligence, Smart Technology, and differentiated instruction. We feel this will help us deal more effectively with students, who are at risk academically.

Graph of Overall School Results (optional)

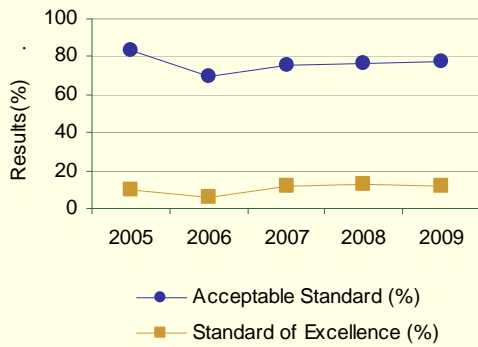


Graph of Provincial Achievement Test Results by Course (optional)

[No Data for English Language Arts 3]

[No Data for Mathematics 3]

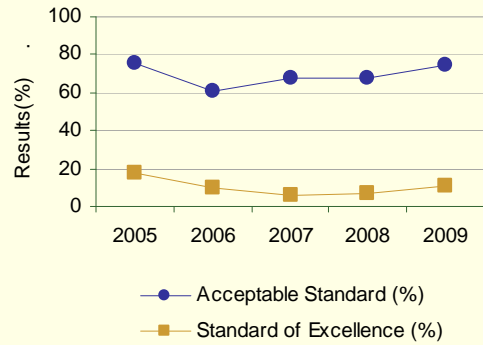
English Language Arts 6



[No Data for French Language Arts 6]

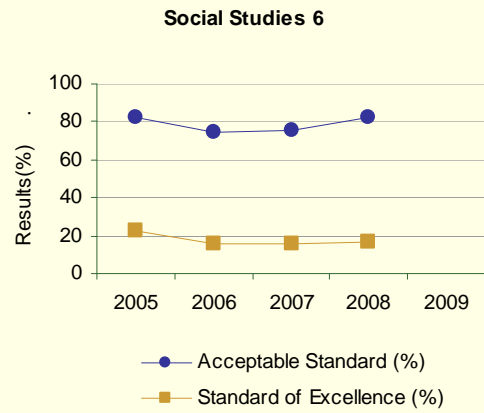
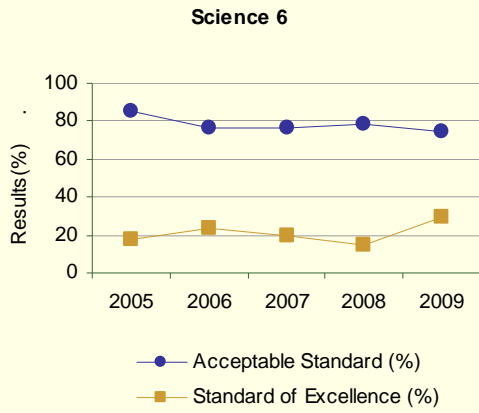
[No Data for Français 6]

Mathematics 6



Note: Data values have been suppressed where the number of students is less than 6. Suppression is marked with an asterisk (*).

Graph of Provincial Achievement Test Results by Course (optional)



[No Data for English Language Arts 9]

[No Data for French Language Arts 9]

[No Data for Français 9]

[No Data for Mathematics 9]

Note: Data values have been suppressed where the number of students is less than 6. Suppression is marked with an asterisk (*).

PAT Results Course By Course Summary By Enrolled With Measure Evaluation (optional)

		Westpark Middle School						Alberta				
		Achievement	Improvement	Overall	2009		Prev 3 Yr Avg		2009		Prev 3 Yr Avg	
Course	Measure				N	%	N	%	N	%	N	%
English Language Arts 6	Acceptable Standard	Low	Maintained	Issue	106	77.4	115	73.7	43,327	81.8	44,326	80.1
	Standard of Excellence	Low	Maintained	Issue	106	11.3	115	10.2	43,327	18.9	44,326	18.9
Mathematics 6	Acceptable Standard	Low	Improved	Acceptable	106	74.5	115	65.3	43,328	76.6	44,327	74.6
	Standard of Excellence	Low	Maintained	Issue	106	10.4	115	7.7	43,328	16.8	44,327	15.3
Science 6	Acceptable Standard	Low	Maintained	Issue	105	74.3	114	77.0	43,216	76.5	44,209	76.0
	Standard of Excellence	High	Improved	Good	105	29.5	114	19.6	43,216	24.8	44,209	26.1

Note: Data values have been suppressed where the number of students is less than 6. Suppression is marked with an asterisk (*).

Too few jurisdictions offer Français (Grades 6, 9) for an Achievement Evaluation to be calculated. However, the results from Français (Grades 6, 9) are included in the aggregation of all PAT courses. Achievement Evaluations for Social Studies 6 and Social Studies 9 are not calculated due to the change in the exams.

Measure Evaluation Reference - Achievement Evaluation

Achievement evaluation is based upon a comparison of Current Year data to a set of standards which remain consistent over time. The Standards are calculated by taking the 3 year average of baseline data for each measure across all school jurisdictions and calculating the 5th, 25th, 75th, and 95th percentiles. Once calculated, these standards remain in place from year to year to allow for consistent planning and evaluation.

The table below shows the range of values defining the 5 achievement evaluation levels for each measure.

Course	Measure	Very Low	Low	Intermediate	High	Very High
English Language Arts 6	Acceptable Standard	0.00 - 67.95	67.95 - 78.40	78.40 - 86.09	86.09 - 91.37	91.37 - 100.00
	Standard of Excellence	0.00 - 6.83	6.83 - 11.65	11.65 - 17.36	17.36 - 22.46	22.46 - 100.00
Mathematics 6	Acceptable Standard	0.00 - 65.88	65.88 - 75.70	75.70 - 84.77	84.77 - 90.26	90.26 - 100.00
	Standard of Excellence	0.00 - 8.68	8.68 - 13.49	13.49 - 19.62	19.62 - 25.59	25.59 - 100.00
Science 6	Acceptable Standard	0.00 - 60.36	60.36 - 78.51	78.51 - 86.46	86.46 - 90.64	90.64 - 100.00
	Standard of Excellence	0.00 - 11.74	11.74 - 17.42	17.42 - 25.34	25.34 - 34.31	34.31 - 100.00

Notes:

The range of values at each evaluation level is interpreted as "greater than or equal to" the "Low" value, and "less than" the "High" value. For the Very High category, values range from "greater than" the "Low" value to 100%.

Too few jurisdictions offer Français (Grades 6, 9) for an Achievement Evaluation to be calculated. However, the results from Français (Grades 6, 9) are included in the aggregation of all PAT courses. Achievement Evaluations for Social Studies 6 and Social Studies 9 are not calculated due to the change in the tests.

Improvement Table

For each jurisdiction, improvement evaluation consists of comparing the Current Year result for each measure with the previous three-year average. A chi-square statistical test is used to determine the significance of the improvement. This test takes into account the size of the jurisdiction in the calculation to make improvement evaluation fair across jurisdictions of different sizes.

The table below shows the definition of the 5 improvement evaluation levels based upon the chi-square result.

Evaluation Category	Chi-Square Range
Declined Significantly	3.84 + (current < previous 3-year average)
Declined	1.00 - 3.83 (current < previous 3-year average)
Maintained	less than 1.00
Improved	1.00 - 3.83 (current > previous 3-year average)
Improved Significantly	3.84 + (current > previous 3-year average)

Overall Evaluation Table

The overall evaluation combines the Achievement Evaluation and the Improvement Evaluation. The table below illustrates how the Achievement and Improvement evaluations are combined to get the overall evaluation.

	Achievement				
	Very High	High	Intermediate	Low	Very Low
Improved Significantly	Excellent	Good	Good	Good	Acceptable
Improved	Excellent	Good	Good	Acceptable	Issue
Maintained	Excellent	Good	Acceptable	Issue	Concern
Declined	Good	Acceptable	Issue	Issue	Concern
Declined Significantly	Acceptable	Issue	Issue	Concern	Concern

Outcome: Students demonstrate high standards in learner outcomes. (continued)

Performance Measure			Results (in percentages)					
			2005	2006	2007	2008	2009	
Grade 6	Participation rates in provincial achievement tests (PATs) for Grades 3, 6 and 9.	English Language Arts 6	School	91.6	89.4	87.8	88.2	86.8
			Authority	91.1	90.8	90.8	89.5	90.0
			Province	89.9	90.1	89.6	89.5	90.0
		Mathematics 6	School	91.6	89.4	91.6	87.3	88.7
			Authority	91.8	92.2	91.8	90.0	91.2
			Province	90.9	90.6	90.0	90.0	90.6
		Science 6	School	91.6	89.4	92.4	89.8	88.6
			Authority	91.5	91.6	92.6	90.9	91.5
			Province	90.6	90.0	89.1	89.0	89.6
		Social Studies 6	School	91.6	89.4	90.8	89.8	n/a
			Authority	91.3	92.2	91.6	91.0	n/a
			Province	90.0	90.5	89.6	89.2	100.0

Note: Data values have been suppressed where the number of students is less than 6. Suppression is marked with an asterisk (*).

Outcome: Students are well prepared for lifelong learning. (continued)

Performance Measure		Results (in percentages)					
		2005	2006	2007	2008	2009	
Percentage of teacher and parent satisfaction that high school graduates demonstrate the knowledge, skills and attitudes necessary for lifelong learning.	Overall (required)	School	66.4	75.1	69.7	68.9	72.4
		Authority	67.4	70.2	70.2	70.8	68.1
		Province	64.4	66.1	65.6	66.7	67.4
	Teacher (optional)	School	79.4	79.4	76.5	82.8	75.0
		Authority	75.9	78.2	76.4	78.5	76.0
		Province	73.7	74.2	74.1	73.8	74.0
	Parent (optional)	School	53.4	70.7	63.0	55.1	69.8
		Authority	58.9	62.1	64.0	63.0	60.2
		Province	55.1	57.9	57.1	59.5	60.8

Comment on Results

(an assessment of progress in relation to past performance)

*Our overall results have improved and we feel we are more aware that the knowledge, skills, and attitudes students develop must serve them well in their future endeavors.

*We try to focus on making learning exciting and meaningful. Our professional development focuses on Smart Technology, instructional intelligence and differentiated instruction. We hope to inspire all learners to become independent and responsible for their own learning.

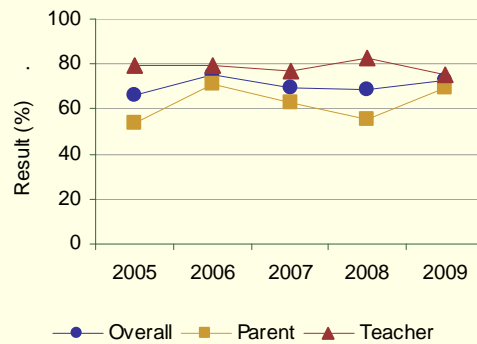
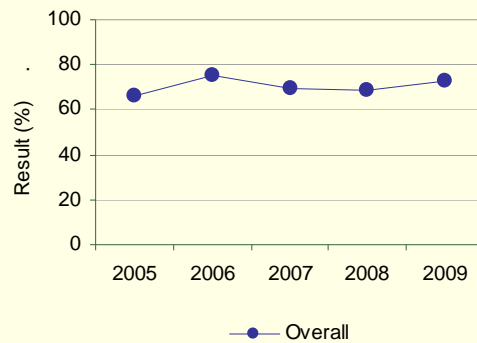
*All grade eight students participate in the JACKS program, which allows them to job shadow an adult.

*We have a leadership option, student council, and provide other opportunities for students to become involved in their school community.

*We currently have partnerships with the college that allow students to experience opportunities they would not normally experience ex. Preparation by college instructors for Math competitions.

*We recognize all students for their strengths and accomplishments with a special recognition program.

Graph of Overall School Results (optional)



Note: Data values have been suppressed where the number of respondents is less than 6. Suppression is marked with an asterisk (*).

Outcome: *Students are well prepared for employment.*

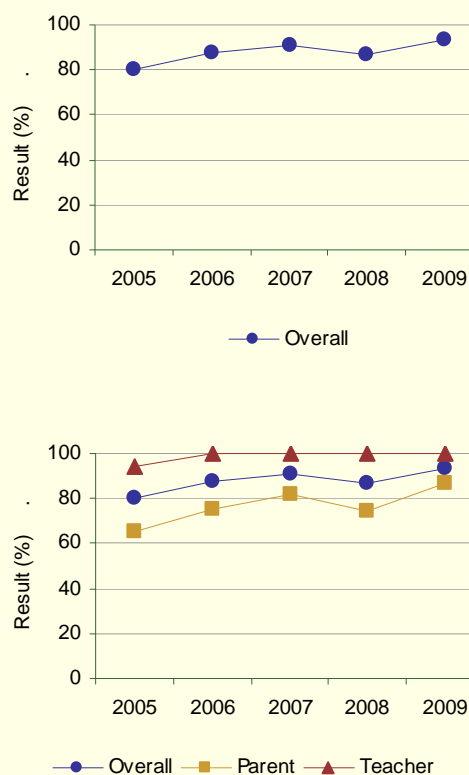
Performance Measure		Results (in percentages)					
		2005	2006	2007	2008	2009	
Percentages of teachers and parents who agree that students are taught attitudes and behaviours that will make them successful at work when they finish school.	Overall (required)	School	79.8	87.5	91.1	87.1	93.2
		Authority	78.0	79.3	83.0	82.8	80.3
		Province	74.9	77.0	77.1	80.1	79.6
	Teacher (optional)	School	94.1	100.0	100.0	100.0	100.0
		Authority	90.7	92.3	92.9	92.1	88.1
		Province	89.1	89.4	89.2	89.3	88.9
	Parent (optional)	School	65.5	75.0	82.1	74.3	86.4
		Authority	65.4	66.4	73.2	73.4	72.5
		Province	60.8	64.6	65.1	70.9	70.2

Comment on Results

(an assessment of progress in relation to past performance)

- *Our results show improvement in this area by both parents and teachers.
- *We feel strongly that we have a responsibility to deliver a meaningful character education program to our students.
- *We provide students with many choices for options, thus giving them exposure to many opportunities they may not normally have ex. Band, Choral, Recreational Education, Environmental Outdoor Education, Foods and Fashion, Art.
- *We have recently received over 100 new computers and almost all classrooms have SmartBoards.
- *Teachers integrate technology into almost all subject areas.
- *Students have opportunities to participate in intramurals, leadership, student council, extramural competition, math competitions, etc.

Graph of Overall School Results (optional)



Note: Data values have been suppressed where the number of respondents is less than 6. Suppression is marked with an asterisk (*).

Outcome: Students model the characteristics of active citizenship.

Performance Measure		Results (in percentages)					
		2005	2006	2007	2008	2009	
Percentages of teachers, parents and students who are satisfied that students model the characteristics of active citizenship.	Overall (required)	School	79.8	84.2	85.6	79.4a	76.2
		Authority	75.3	78.0	79.3	80.2	80.0
		Province	75.3	76.8	76.6	77.9	80.3
	Teacher (optional)	School	95.3	96.4	100.0	94.9	95.4
		Authority	91.9	94.0	93.9	94.0	93.8
		Province	89.5	90.3	89.9	90.6	91.8
	Parent (optional)	School	67.3	80.8	77.2	68.6	69.6
		Authority	72.4	70.9	74.8	74.8	75.6
		Province	70.3	72.4	72.6	74.7	77.4
	Student (optional)	School	76.8	75.3	79.5	74.6	63.6
		Authority	61.6	69.2	69.1	71.8	70.7
		Province	66.1	67.5	67.1	68.5	71.8

Comment on Results

(an assessment of progress in relation to past performance)

*We feel that our results are not as high as we would like them to be and feel that there is room for improvement. Promoting active citizenship is a high priority at WMS.

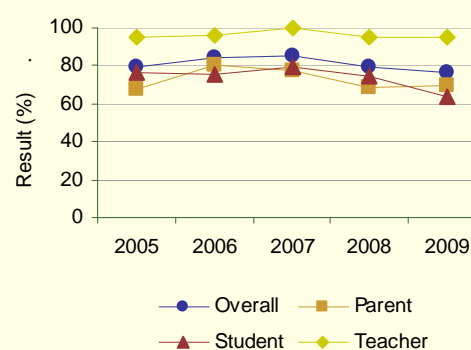
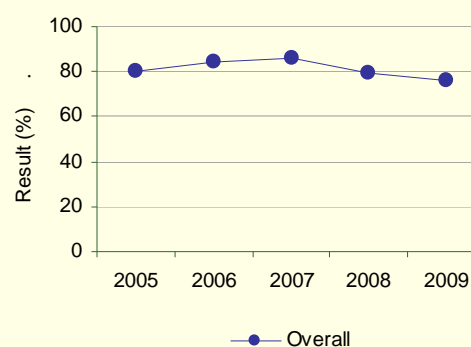
*The result for the teacher component is high, as we actively teach character education and what it takes to be a good citizen.

*Students are involved in fundraising efforts for Kenya, adopt a family at Christmas, donate money and food to the food bank etc., so students do take an active role in their community and are involved on a regular basis in giving something back to their community.

*Students help other students in their own school, as well as at other schools, for example several students chose to help at West Park Elementary School during their Halloween celebration.

*Students are encouraged to be good citizens and taught about the things that good citizens do.

Graph of Overall School Results (optional)



Note: Data values have been suppressed where the number of respondents is less than 6. Suppression is marked with an asterisk (*).

Also report results on all local authority/school Goal Two measures from the authority's/school's Three-Year Education Plan 2008/09 – 2010/11 in relation to Goal 2, Goal 2 outcomes and targets for 2008/09. Minimum one year of results – schools are encouraged to provide multi-year results for trend analysis.

Goal Three: Highly Responsive and Responsible Jurisdiction

Outcome: The authority demonstrates effective working relationships.

Performance Measure		Results (in percentages)					
		2005	2006	2007	2008	2009	
Percentage of teachers and parents satisfied with parental involvement in decisions about their child's education.	Overall (required)	School	80.1	81.1	83.7	82.0	74.1
		Authority	80.2	80.8	81.4	81.3	79.1
		Province	76.1	77.9	77.5	78.2	80.1
	Teacher (optional)	School	90.6	90.0	89.2	94.9	90.8
		Authority	90.1	88.6	89.1	89.9	87.4
		Province	87.0	87.6	87.1	87.5	88.0
	Parent (optional)	School	69.5	72.1	78.2	69.2	57.4
		Authority	70.3	73.0	73.7	72.6	70.7
		Province	65.2	68.1	67.9	69.0	72.2

Comment on Results

(an assessment of progress in relation to past performance)

*The results for this outcome are disappointing. Our hope is to try to involve the parents, as much as possible and encourage them to become more involved in our school community.

*This year we have tried to involve more parents in School Council and will have presentations occur on these nights to try and encourage more involvement by parents.

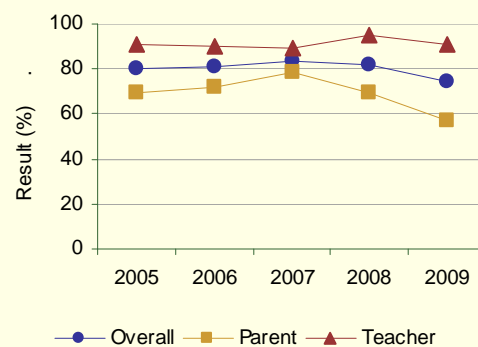
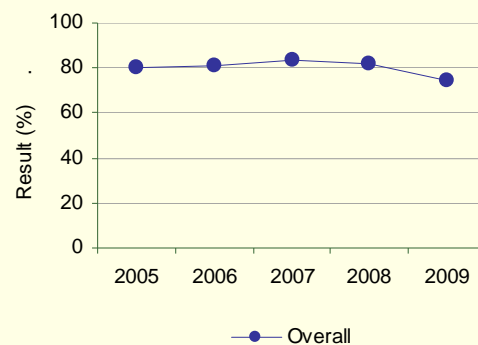
*Teachers are encouraged to contact parents, at least once per year with good news about their child.

*We try to conference with students at risk, their parents, their teachers, and administration to discuss issues and problem solve.

*We will seek parent input by advertising on the website, in the newsletter, and by sending home notices.

*Teachers will invite parent involvement at conferences.

Graph of Overall School Results (optional)



Note: Data values have been suppressed where the number of respondents is less than 6. Suppression is marked with an asterisk (*).

Outcome: The authority demonstrates leadership and continuous improvement.

Performance Measure		Results (in percentages)					
		2005	2006	2007	2008	2009	
Percentages of teachers, parents and students indicating that their school and schools in their jurisdiction have improved or stayed the same the last three years.	Overall (required)	School	83.5	86.9	84.7	81.9	81.5
		Authority	76.3	81.4	81.1	83.1	80.0
		Province	73.9	76.8	76.3	77.0	79.4
	Teacher (optional)	School	100.0	94.1	88.2	81.3	92.3
		Authority	76.3	82.4	78.0	81.5	75.9
		Province	73.1	75.5	74.5	75.6	78.2
	Parent (optional)	School	74.2	85.0	79.3	77.1	82.6
		Authority	75.8	79.4	82.0	82.2	79.6
		Province	70.9	75.4	75.1	75.9	78.1
	Student (optional)	School	76.4	81.6	86.7	87.3	69.5
		Authority	76.7	82.5	83.3	85.6	84.4
		Province	77.9	79.4	79.3	79.5	81.8

Comment on Results

(an assessment of progress in relation to past performance)

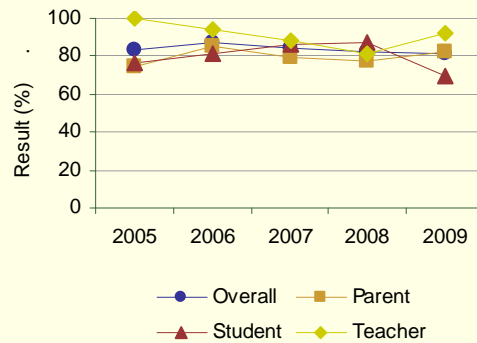
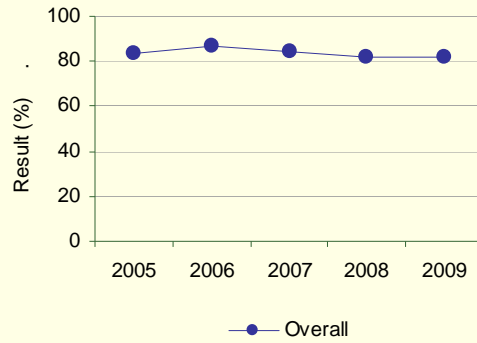
*Our results are excellent on this measure, however, student opinion has declined significantly.

*With our three year AISI project, we hope to engage and motivate students through the use of instructional intelligence, differentiated instruction, and through the use all technology including Smart Technology.

*We hope to build a new computer lab to accommodate a continued and increased use of the integration of technology.

*We will continue to improve our knowledge of methods that will increase engagement and student achievement.

Graph of Overall School Results (optional)



Note: Data values have been suppressed where the number of respondents is less than 6. Suppression is marked with an asterisk (*).

Outcome: The authority demonstrates leadership and continuous improvement. (continued)

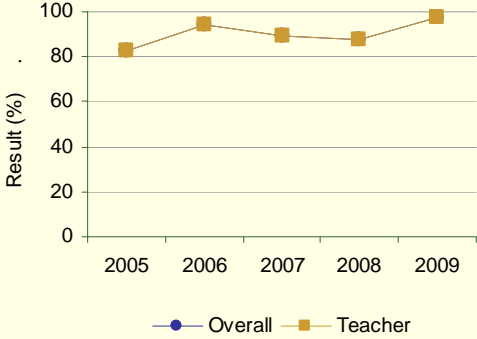
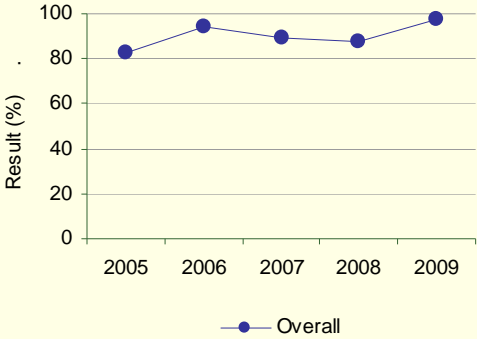
Performance Measure			Results (in percentages)				
			2005	2006	2007	2008	2009
The percentage of teachers reporting that in the past 3-5 years the professional development and in-servicing received from the school authority has been focused, systematic and contributed significantly to their ongoing professional growth.	Overall (required)	School	82.4	94.1	89.6	87.5	97.4
		Authority	87.1	91.3	82.7	86.4	85.5
		Province	76.5	78.2	78.8	80.4	81.5
	Teacher (optional)	School	82.4	94.1	89.6	87.5	97.4
		Authority	87.1	91.3	82.7	86.4	85.5
		Province	76.5	78.2	78.8	80.4	81.5

Comment on Results

(an assessment of progress in relation to past performance)

*Teachers are pleased with the leadership demonstrated by the authority, who have achieved an overall evaluation of excellent.
 *Teachers are pleased with the opportunities for professional development and the commitment by the jurisdiction to continued professional learning.
 *AISI has provided an opportunity for teachers to engage in professional development that would not normally be possible.
 *Teachers are attending the Alberta Teacher's Association Middle Year's conference in April.
 *We continue to engage in monthly professional development at staff meetings.

Graph of Overall School Results (optional)



Note: Data values have been suppressed where the number of respondents is less than 6. Suppression is marked with an asterisk (*).

Also report:

- results on all local authority/school Goal Three measures from the authority and school Three-Year Education Plan 2008/09 – 2010/11 in relation to Goal 3, Goal 3 outcomes and targets for 2008/09. Minimum one year of results – Schools are encouraged to provide multi-year results for trend analysis.

School Generated Funds
Annual Financial Report: Yearly Activity
For the Period September 1, 2008 to August 31, 2009

School
: Westpark Middle School

Revenue	
Facility Rentals	\$260.00
School Wide Programs (eg. Breakfast Program, Hot Lunch, Lunchroom, Milk, etc.)	\$4,700.77
Student Activities (extracurricular field trips, graduation, etc.)	\$176,413.81
Clubs	\$8,465.30
District Wide Projects (Dawe Run, Young Writers' Conference, Ski Loppet, etc.)	\$3,695.00
Transportation (bus and van rentals and charges)	(\$1,841.00)
Product Sales (Yearbook, T-Shirts, Agendas, Photos, etc.)	\$1,234.85
Interest on Bank Accounts/Investments	\$1,740.77
Fundraising (vending machines, other sales, etc.)	\$21,636.03
Partnership Projects (funding from external agencies)	\$0.00
Other Special Projects (other class projects not included above)	\$5,761.94
Total Revenue	\$222,067.47

Expenses

Facility Rentals	\$1,555.91
School Wide Programs (eg. Breakfast Program, Hot Lunch, Lunchroom, Milk, etc.)	\$9,876.35
Student Activities (extracurricular field trips, graduation, etc.)	\$185,644.04
Clubs	\$7,958.81
District Wide Projects (Dawe Run, Young Writers' Conference, Ski Loppet, etc.)	\$4,405.73
Transportation (bus and van rentals and charges)	(\$1,700.00)
Product Sales (Yearbook, T-Shirts, Agendas, Photos, etc.)	\$92.91
Service Charges on Bank Accounts/Investments	\$2,667.55
Fundraising (vending machines, other sales, etc.)	\$26,458.92
Partnership Projects (funding from external agencies)	\$0.00
Other Special Projects (other class projects not included above)	\$4,180.32
Total Expenses	\$241,140.54
Net Surplus / (Deficit)	(\$19,073.07)

Development of School Education Plan

Staff, School Council and Parent Involvement

The education plan was developed in partnership with parents and staff. Staff spent an afternoon studying feedback received from the Schollie Research and Consulting Survey given to grade six and eight students and parents and the Provincial Accountability Pillar Results Report. Staff then came up with a number of suggestions for school strategies to address improvement where needed. Parents at school council were given the opportunity to hear the staff ideas and to add any other strategies they felt may be useful.

We are committed to implementing the strategies in this plan in order to improve results. Results are posted on the school website and will be available for viewing at the office. This plan has been submitted to Central Services and shared with the staff and School Council members. We will also share many of these strategies with parents on a regular basis in our school newsletters.

Website Address:

- www.rdpsd.ab.ca/wms

Class Size Report 2008/2009

School Year	School Code	School Name	Subject	Grade	Class Size
2008	4454	Westpark Middle School	Language Arts English/French	6	24
2008	4454	Westpark Middle School	Language Arts English/French	6	24
2008	4454	Westpark Middle School	Language Arts English/French	6	25
2008	4454	Westpark Middle School	Language Arts English/French	6	22
2008	4454	Westpark Middle School	Social Studies	6	24
2008	4454	Westpark Middle School	Social Studies	6	24
2008	4454	Westpark Middle School	Language Arts English/French	6/7/8	12
2008	4454	Westpark Middle School	Science	6/7/8	12
2008	4454	Westpark Middle School	Mathematics	6/7/8	14
2008	4454	Westpark Middle School	Social Studies	6/7/8	14
2008	4454	Westpark Middle School	Language Arts English/French	6/7/8	14
2008	4454	Westpark Middle School	Science	6/7/8	14
2008	4454	Westpark Middle School	Mathematics	6/7/8	12
2008	4454	Westpark Middle School	Social Studies	6/7/8	12
2008	4454	Westpark Middle School	Physical Education	8	32
2008	4454	Westpark Middle School	Physical Education	8	30
2008	4454	Westpark Middle School	Physical Education	8	28
2008	4454	Westpark Middle School	Environmental and Outdoor Education	8	23
2008	4454	Westpark Middle School	Career and Technology Studies	8	23
2008	4454	Westpark Middle School	Career and Technology Studies	8	26
2008	4454	Westpark Middle School	Language Arts English/French	8	29
2008	4454	Westpark Middle School	Social Studies	8	29
2008	4454	Westpark Middle School	Mathematics	8	29
2008	4454	Westpark Middle School	Science	8	29
2008	4454	Westpark Middle School	Physical Education	8	30
2008	4454	Westpark Middle School	Physical Education	8	27
2008	4454	Westpark Middle School	Music	8	14
2008	4454	Westpark Middle School	Local Developed Course	8	24
2008	4454	Westpark Middle School	Local Developed Course	8	32
2008	4454	Westpark Middle School	Local Developed Course	8	32
2008	4454	Westpark Middle School	Career and Technology Studies	8	35
2008	4454	Westpark Middle School	Drama	8	32
2008	4454	Westpark Middle School	Science	8	28
2008	4454	Westpark Middle School	Health	8	29
2008	4454	Westpark Middle School	Health	8	32
2008	4454	Westpark Middle School	Health	8	34
2008	4454	Westpark Middle School	Health	8	29
2008	4454	Westpark Middle School	Language Arts English/French	8	16
2008	4454	Westpark Middle School	Mathematics	8	27
2008	4454	Westpark Middle School	Mathematics	8	28
2008	4454	Westpark Middle School	Mathematics	8	28
2008	4454	Westpark Middle School	Science	8	27
2008	4454	Westpark Middle School	Science	8	27
2008	4454	Westpark Middle School	Science	8	28
2008	4454	Westpark Middle School	Language Arts English/French	8	28
2008	4454	Westpark Middle School	Social Studies	8	27

2008	4454	Westpark Middle School	Social Studies	8	27
2008	4454	Westpark Middle School	Social Studies	8	28
2008	4454	Westpark Middle School	Social Studies	8	28
2008	4454	Westpark Middle School	Mathematics	8	27
2008	4454	Westpark Middle School	Career and Technology Studies	7	14
2008	4454	Westpark Middle School	Career and Technology Studies	7	21
2008	4454	Westpark Middle School	Career and Technology Studies	7	11
2008	4454	Westpark Middle School	Language Arts English/French	8	27
2008	4454	Westpark Middle School	Language Arts English/French	8	27
2008	4454	Westpark Middle School	Language Arts English/French	8	28
2008	4454	Westpark Middle School	Physical Education	7	32
2008	4454	Westpark Middle School	Physical Education	7	30
2008	4454	Westpark Middle School	Physical Education	7	29
2008	4454	Westpark Middle School	Physical Education	7	24
2008	4454	Westpark Middle School	Environmental and Outdoor Education	7	24
2008	4454	Westpark Middle School	Career and Technology Studies	7	28
2008	4454	Westpark Middle School	Language Arts English/French	7	13
2008	4454	Westpark Middle School	Local Developed Course	7	16
2008	4454	Westpark Middle School	Local Developed Course	7	18
2008	4454	Westpark Middle School	Local Developed Course	7	26
2008	4454	Westpark Middle School	Music	7	25
2008	4454	Westpark Middle School	Career and Technology Studies	7	23
2008	4454	Westpark Middle School	Science	7	28
2008	4454	Westpark Middle School	Science	7	25
2008	4454	Westpark Middle School	Health	7	22
2008	4454	Westpark Middle School	Health	7	24
2008	4454	Westpark Middle School	Health	7	29
2008	4454	Westpark Middle School	Health	7	31
2008	4454	Westpark Middle School	Mathematics	7	28
2008	4454	Westpark Middle School	Mathematics	7	24
2008	4454	Westpark Middle School	Mathematics	7	28
2008	4454	Westpark Middle School	Mathematics	7	25
2008	4454	Westpark Middle School	Science	7	28
2008	4454	Westpark Middle School	Science	7	24
2008	4454	Westpark Middle School	Language Arts English/French	7	28
2008	4454	Westpark Middle School	Language Arts English/French	7	25
2008	4454	Westpark Middle School	Social Studies	7	28
2008	4454	Westpark Middle School	Social Studies	7	24
2008	4454	Westpark Middle School	Social Studies	7	28
2008	4454	Westpark Middle School	Social Studies	7	25
2008	4454	Westpark Middle School	Career and Technology Studies	6	15
2008	4454	Westpark Middle School	Career and Technology Studies	6	16
2008	4454	Westpark Middle School	Career and Technology Studies	6	28
2008	4454	Westpark Middle School	Career and Technology Studies	6	27
2008	4454	Westpark Middle School	Language Arts English/French	7	28
2008	4454	Westpark Middle School	Language Arts English/French	7	24
2008	4454	Westpark Middle School	Local Developed Course	6	26
2008	4454	Westpark Middle School	Local Developed Course	6	17
2008	4454	Westpark Middle School	Physical Education	6	28
2008	4454	Westpark Middle School	Physical Education	6	33

2008	4454	Westpark Middle School	Physical Education	6	21
2008	4454	Westpark Middle School	Physical Education	6	22
2008	4454	Westpark Middle School	Health	6	26
2008	4454	Westpark Middle School	Health	6	20
2008	4454	Westpark Middle School	Health	6	20
2008	4454	Westpark Middle School	Music	6	14
2008	4454	Westpark Middle School	Music	6	16
2008	4454	Westpark Middle School	Art	6	15
2008	4454	Westpark Middle School	Science	6	24
2008	4454	Westpark Middle School	Science	6	24
2008	4454	Westpark Middle School	Science	6	25
2008	4454	Westpark Middle School	Science	6	22
2008	4454	Westpark Middle School	Language Arts English/French	6	28
2008	4454	Westpark Middle School	Health	6	26
2008	4454	Westpark Middle School	Social Studies	6	25
2008	4454	Westpark Middle School	Social Studies	6	22
2008	4454	Westpark Middle School	Mathematics	6	24
2008	4454	Westpark Middle School	Mathematics	6	24
2008	4454	Westpark Middle School	Mathematics	6	25
2008	4454	Westpark Middle School	Mathematics	6	22