



**LINDSAY THURBER  
COMPREHENSIVE  
HIGH SCHOOL**

**Annual Education Results Report  
2008 – 2009**



## October 2009 Accountability Pillar Overall Summary (OPTIONAL)

Goal	Measure Category	Measure Category Evaluation	Measure	Lindsay Thurber Comp High Sch			Alberta			Measure Evaluation		
				Current Result	Prev Year Result	Prev 3 yr Average	Current Result	Prev Year Result	Prev 3 Yr Average	Achievement	Improvement	Overall
Goal 1: High Quality Learning Opportunities for All	Safe and Caring Schools	Issue	Safe and Caring	79.3	80.9	78.1	86.9	85.1	84.6	Low	Maintained	Issue
	Student Learning Opportunities	Good	Program of Studies	85.6	83.8	83.9	80.3	79.4	78.7	Very High	Maintained	Excellent
			Education Quality	83.8	84.4	82.7	89.3	88.2	87.8	Low	Maintained	Issue
			Drop Out Rate	4.4	5.3	5.2	4.8	5.0	4.9	Intermediate	Improved	Good
			High School Completion Rate (3 yr)	69.1	64.0	67.3	70.7	71.0	70.6	Intermediate	Maintained	Acceptable
Goal 2: Excellence in Learner Outcomes	Student Learning Achievement (Grades K-9)	Concern	PAT: Acceptable	69.5	66.4	67.4	76.8	75.3	75.6	Low	Maintained	Issue
			PAT: Excellence	9.1	7.4	9.8	19.2	18.3	18.3	Very Low	Maintained	Concern
	Student Learning Achievement (Grades 10-12)	n/a	Diploma: Acceptable	86.6	82.4	83.5	84.4	84.4	84.5	Intermediate	Improved	Good
			Diploma: Excellence	16.7	16.0	16.5	19.1	19.4	20.3	Intermediate	Maintained	Acceptable
			Diploma Exam Participation Rate (4+ Exams)	45.6	49.3	50.1	53.3	53.6	53.6	Intermediate	Declined	Issue
			Rutherford Scholarship Eligibility Rate (Revised)	53.4	55.7	54.6	57.3	56.8	55.8	Intermediate	n/a	n/a
			Transition Rate (6 yr)	53.1	49.1	53.9	60.7	60.3	59.1	Intermediate	Maintained	Acceptable
	Preparation for Lifelong Learning, World of Work, Citizenship	Acceptable	Work Preparation	70.0	77.1	74.8	79.6	80.1	78.1	Low	Maintained	Issue
			Citizenship	72.1	67.5	66.5	80.3	77.9	77.1	Intermediate	Improved	Good
Goal 4: Highly Responsive and Responsible Jurisdiction (Ministry)	Parental Involvement	Concern	Parental Involvement	70.4	71.6	70.2	80.1	78.2	77.9	Very Low	Maintained	Concern
	Continuous Improvement	Issue	School Improvement	68.1	74.4	71.6	79.4	77.0	76.7	Low	Declined	Issue

### Notes:

- 1) Student Learning Achievement: PAT Values reported are weighted averages of PAT Acceptable and PAT Excellence results. Courses included: ELA (Grades 3, 6, 9), Math (Grades 3, 6, 9), Science (Grades 6, 9), French Language Arts (Grades 6, 9), Français (Grades 6, 9).
- 2) Student Learning Achievement: Diploma Exam Values reported are averages of Diploma Acceptable and Diploma Excellence results, weighted by the number of students enrolled in each course.
- 3) Overall evaluations can only be calculated if both improvement and achievement evaluations are available.
- 4) Data values have been suppressed where the number of students is less than 6. Suppression is marked with an asterisk (\*).

## Goal One: High Quality Learning Opportunities for All

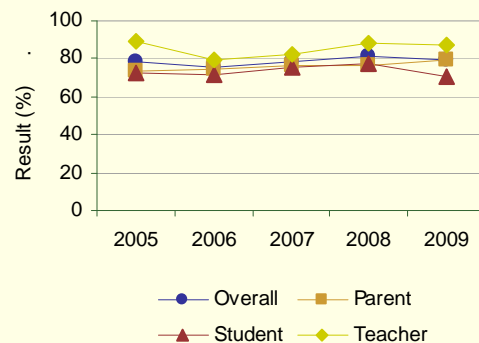
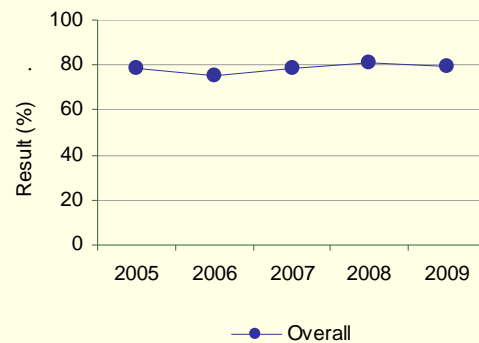
Outcome: Schools provide a safe and caring environment.

Performance Measure			Results (in percentages)				
			2005	2006	2007	2008	2009
Percentage of teacher, parent and student agreement that: students are safe at school, are learning the importance of caring for others, are learning respect for others and are treated fairly in school.	Overall (required)	School	78.5	75.1	78.2	80.9	79.3
		Authority	82.1	84.1	85.2	87.4	86.6
		Province	83.1	84.4	84.2	85.1	86.9
	Teacher (optional)	School	89.7	79.7	82.1	88.7	87.3
		Authority	93.0	94.2	93.5	94.9	94.4
		Province	92.3	92.8	92.6	93.1	93.8
	Parent (optional)	School	73.5	74.4	76.6	76.5	79.6
		Authority	80.0	79.6	83.1	85.8	85.4
		Province	79.9	82.1	81.7	83.2	85.3
	Student (optional)	School	72.1	71.3	75.9	77.4	71.0
		Authority	73.3	78.4	78.9	81.6	80.1
		Province	77.2	78.4	78.5	79.1	81.7

### Comment on Results

- Through the efforts of groups like the Leadership class, Link Crew and the Dwayne Peace Initiative has shown that Lindsay Thurber Comprehensive High is showing improvement in this area.
- The introduction of the position of a School Resource Officer assigned to Lindsay Thurber Comprehensive High School had a positive effect on the school.
- Lindsay Thurber Comprehensive High will continue to work to establish a Principal's Advisory Group

### Graph of Overall School Results (optional)



Note: Data values have been suppressed where the number of respondents is less than 6. Suppression is marked with an asterisk (\*).

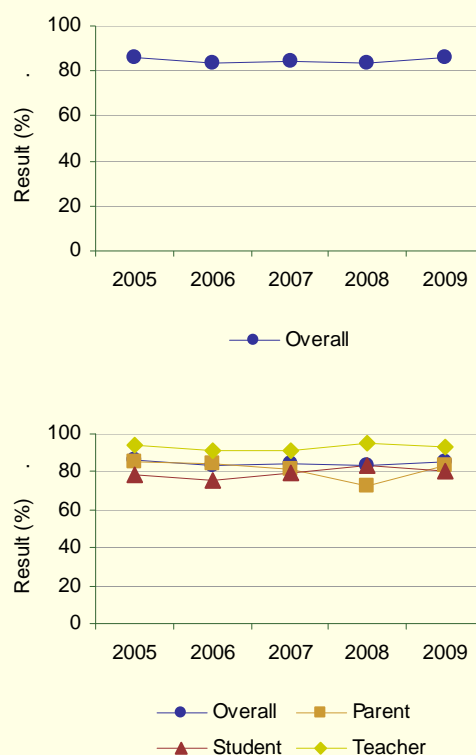
**Outcome:** *The education system meets the needs of all K–12 students, society and the economy.*

Performance Measure		Results (in percentages)					
		2005	2006	2007	2008	2009	
Percentage of teachers, parents and students satisfied with the opportunity for students to receive a broad program of studies including fine arts, career, technology, and health and physical education.	Overall (required)	School	86.1	83.7	84.1	83.8	85.6
		Authority	82.8	84.9	85.6	85.5	85.8
		Province	76.7	78.1	78.5	79.4	80.3
	Teacher (optional)	School	94.5	91.1	91.0	95.1	93.0
		Authority	91.4	92.9	93.4	92.3	90.7
		Province	83.6	85.2	85.7	86.4	86.8
	Parent (optional)	School	85.7	84.4	81.4	72.7	83.4
		Authority	83.8	84.8	84.1	83.2	85.5
		Province	75.0	76.6	76.9	77.6	78.7
	Student (optional)	School	78.2	75.7	79.8	83.7	80.4
		Authority	73.1	76.9	79.4	81.0	81.1
		Province	71.5	72.6	72.9	74.1	75.3

#### Comment on Results

- Lindsay Thurber Comprehensive High School continues to offer broad based education to the satisfaction of teachers, parents and students.
- The school participated in a number of videoconferencing sessions in support of the regular program of studies in order to improve the educational experience of our students
- The Music Appreciation class for the Pathways and Foundations students became part of the of Special Education program at Lindsay Thurber Comprehensive High School with 20 students participating on a daily basis.
- The Scheduling Task Force reviewed the scheduling process and made a number of recommendations for implementation in 2009 – 2010.

#### Graph of Overall School Results (optional)



Note: Data values have been suppressed where the number of respondents is less than 6. Suppression is marked with an asterisk (\*).

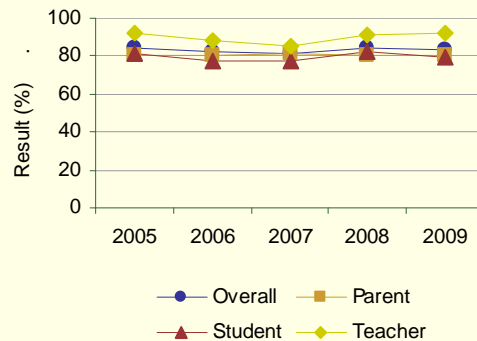
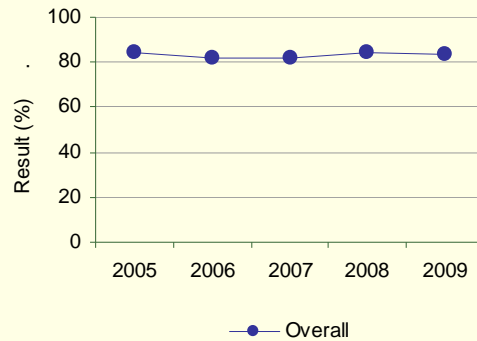
Outcome: *The education system meets the needs of all K–12 students, society and the economy. (continued)*

Performance Measure			Results (in percentages)				
			2005	2006	2007	2008	2009
Percentage of teachers, parents and students satisfied with the overall quality of basic education.	Overall (required)	School	84.6	81.9	81.6	84.4	83.8
		Authority	88.5	89.3	90.2	90.5	89.4
		Province	86.1	87.7	87.6	88.2	89.3
	Teacher (optional)	School	91.9	88.2	85.2	91.3	91.9
		Authority	96.4	96.9	96.6	96.9	96.3
		Province	93.9	94.8	94.7	94.9	95.3
	Parent (optional)	School	80.7	80.1	81.8	80.0	80.2
		Authority	84.7	84.3	87.4	86.3	84.0
		Province	78.9	81.6	81.8	83.0	84.4
	Student (optional)	School	81.1	77.5	77.9	81.9	79.2
		Authority	84.6	86.8	86.6	88.4	87.9
		Province	85.6	86.6	86.4	86.6	88.3

**Comment on Results**

- Satisfaction with the overall quality of the education provided to the students of Lindsay Thurber Comprehensive High School continues to improve as a result of a number of initiatives undertaken by the school noted throughout this document.

**Graph of Overall School Results (optional)**



Note: Data values have been suppressed where the number of respondents is less than 6. Suppression is marked with an asterisk (\*).

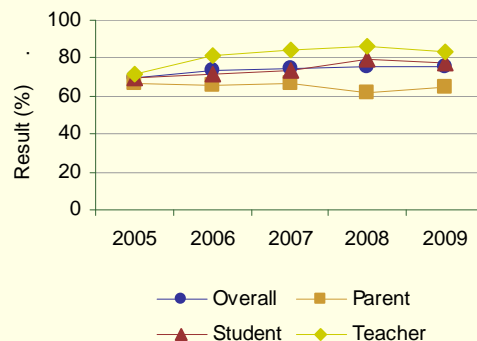
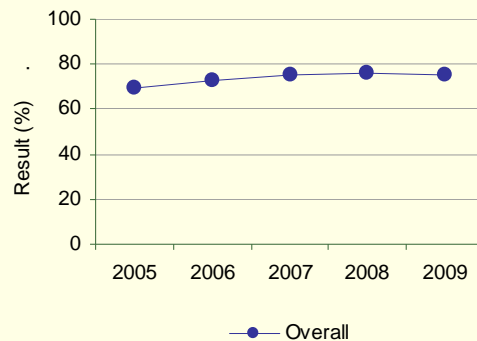
Outcome: The education system meets the needs of all K–12 students, society and the economy. (continued)

Performance Measure			Results (in percentages)				
			2005	2006	2007	2008	2009
Percentage of teacher, parent and student satisfaction with the accessibility, effectiveness and efficiency of programs and services for students in their community.	Overall (required)	School	69.5	73.1	75.0	75.9	75.3
		Authority	68.6	71.7	70.1	70.0	69.9
		Province	67.2	68.5	68.2	69.2	70.3
	Teacher (optional)	School	71.9	81.5	84.5	85.9	83.8
		Authority	75.2	77.4	75.9	75.5	74.7
		Province	70.0	71.5	72.0	73.4	74.5
	Parent (optional)	School	66.7	65.9	67.0	62.1	64.9
		Authority	57.2	62.0	59.7	56.9	57.1
		Province	54.9	56.9	55.9	56.5	58.1
	Student (optional)	School	70.0	72.0	73.6	79.7	77.0
		Authority	73.6	75.6	74.6	77.8	78.0
		Province	76.7	77.1	76.8	77.7	78.4

Comment on Results

- Lindsay Thurber Comprehensive High School continues to provide quality programs and services to students in comparison to district and provincial results.
- The increase in results is partially the result of the introduction of a career counselor and a counselor specifically for Special Needs students.

Graph of Overall School Results (optional)



Note: Data values have been suppressed where the number of respondents is less than 6. Suppression is marked with an asterisk (\*).

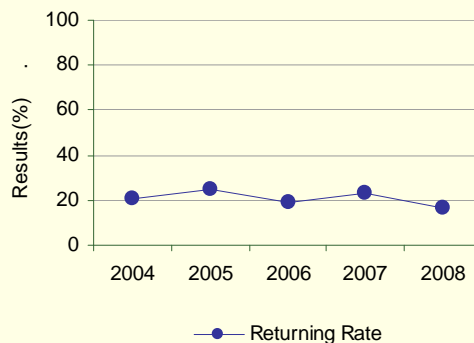
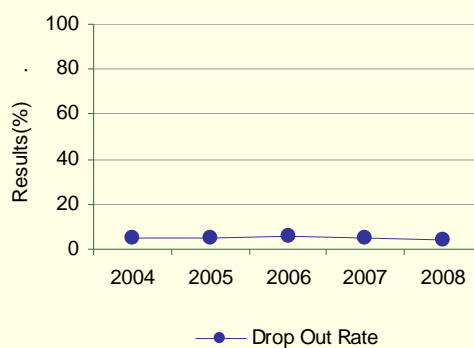
Outcome: *Children and youth at risk have their needs addressed through effective programs and supports.*

Performance Measure		Results (in percentages)				
		2004	2005	2006	2007	2008
Drop Out Rate - annual dropout rate of students aged 14 to 18 (required).	School	5.1	4.7	5.7	5.3	4.4
	Authority	6.3	5.6	6.0	6.3	4.6
	Province	5.3	5.0	4.7	5.0	4.8
Returning Rate (optional)	School	20.4	24.5	18.9	23.2	16.2
	Authority	20.3	21.9	19.8	22.5	15.5
	Province	23.0	21.3	21.2	21.3	19.8

Comment on results

- With the introduction of a Program of Interventions in addition to various other initiatives has lead to a decrease in the dropout rate as well as the need for students to return to the school to complete their High School diploma in a Grade 13 situation.

Graph of Overall School Results (optional)



Note: Data values have been suppressed where the number of respondents is less than 6. Suppression is marked with an asterisk (\*).

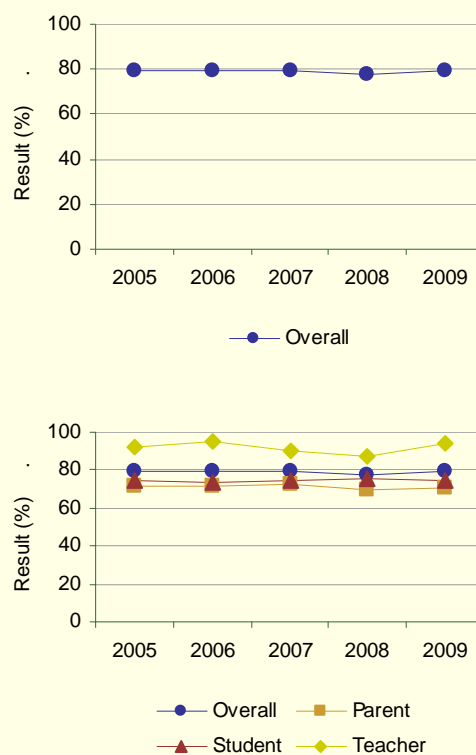
Outcome: Children and youth at risk have their needs addressed through effective programs and supports. (continued)

Performance Measure			Results (in percentages)				
			2005	2006	2007	2008	2009
Percentage of teacher, parent and student agreement that programs for children at risk are easy to access and timely.	Overall (required)	School	79.4	79.7	79.1	77.5	79.6
		Authority	80.7	83.9	82.9	83.2	83.5
		Province	76.9	78.6	78.3	79.5	81.4
	Teacher (optional)	School	92.2	94.7	89.9	87.4	93.7
		Authority	94.2	96.5	93.6	93.1	95.0
		Province	90.6	91.6	91.2	91.9	92.5
	Parent (optional)	School	71.5	71.1	72.6	69.6	70.6
		Authority	72.1	76.2	76.1	74.1	73.7
		Province	63.8	67.0	66.8	68.5	71.3
	Student (optional)	School	74.4	73.2	74.9	75.6	74.5
		Authority	75.7	79.2	79.1	82.5	81.9
		Province	76.1	77.1	77.0	78.0	80.3

Comment on results

- Lindsay Thurber Comprehensive High School has seen improvement to services for students at risk by a variety initiatives such as career counselor position, a counselor for the Special Education programs as well as a Program of Interventions.

Graph of Overall School Results (optional)



Note: Data values have been suppressed where the number of respondents is less than 6. Suppression is marked with an asterisk (\*).

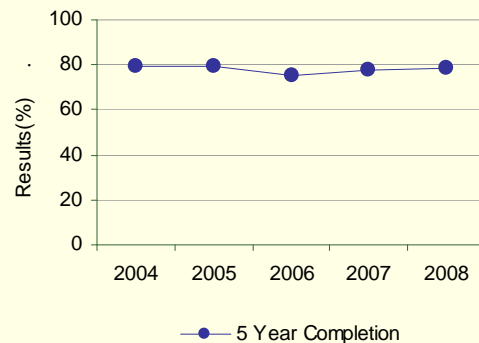
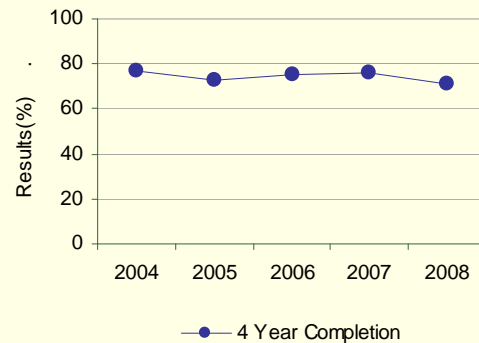
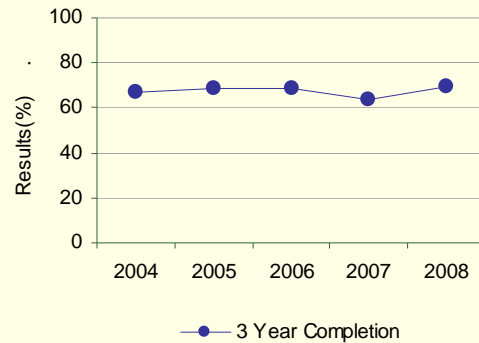
Outcome: Students complete programs.

Performance Measure			Results (in percentages)				
			2004	2005	2006	2007	2008
High School Completion Rate – percentages of students who completed high school within three, four and five years of entering Grade 10.	Within 3 Years	School	66.8	68.9	68.9	64.0	69.1
		Authority	64.9	66.8	68.1	65.9	67.7
		Province	69.3	70.4	70.4	71.0	70.7
	Within 4 Years	School	77.1	72.5	75.0	75.9	71.4
		Authority	74.4	71.1	73.0	73.8	72.1
		Province	73.4	75.1	76.2	76.3	76.5
	Within 5 Years	School	79.6	79.7	75.6	77.4	78.7
		Authority	77.6	77.3	74.4	75.9	77.2
		Province	75.5	77.4	78.6	79.5	79.2

#### Comment on Results

- Students in Grade 10 and Grade 11 maintained a program of 40 or more credits throughout the year.
- Lindsay Thurber Comprehensive High School implemented a School Attendance policy that required parental involvement in regard to the student's attendance
- Lindsay Thurber Comprehensive High School implemented a new policy which required all students who participated in Graduation ceremonies to be in a position to complete their programs successfully.

#### Graph of Overall School Results (optional)



Note: Data values have been suppressed where the number of respondents is less than 6. Suppression is marked with an asterisk (\*).

## Goal Two: Excellence in Student Learning Outcomes

Outcome: Students demonstrate high standards in learner outcomes.

Performance Measure		Results (in percentages)**											
PAT Results by Number Enrolled - percentages of students who achieve the acceptable standard and the percentages who achieve the standard of excellence on Grades 3, 6 and 9 Provincial Achievement Tests (cohort results).													
		2005		2006		2007		2008		2009			
		A	E	A	E	A	E	A	E	A	E	A	E
Grade 9	English Language Arts 9	School	69.4	7.4	74.9	10.8	76.9	10.8	74.9	8.6	79.1	12.7	
		Authority	68.3	7.4	75.3	9.8	73.5	11.3	74.3	11.8	79.1	14.7	
		Province	77.9	14.1	77.4	13.6	77.5	14.8	76.5	14.8	78.7	14.7	
	French Language Arts 9	School	90.9	7.6	73.8	9.2	73.6	13.9	73.0	8.1	89.6	10.4	
		Authority	90.9	7.6	73.8	9.2	73.6	13.9	73.0	8.1	89.6	10.4	
		Province	85.9	13.6	83.3	10.9	81.3	12.9	84.5	12.4	81.8	10.3	
	Français 9	School	n/a	n/a	n/a	n/a	n/a	n/a	n/a	n/a	n/a	n/a	
		Authority	n/a	n/a	n/a	n/a	n/a	n/a	n/a	n/a	n/a	n/a	
		Province	87.2	17.4	86.1	14.7	81.6	12.6	84.8	11.7	85.6	12.9	
	Mathematics 9	School	60.4	12.3	63.9	16.5	62.8	13.5	61.4	9.2	65.1	9.6	
		Authority	63.8	16.6	68.3	16.3	65.2	16.2	66.0	15.1	65.6	15.5	
		Province	68.0	19.7	67.4	17.4	66.3	18.3	65.7	18.5	67.0	18.6	
	Science 9	School	60.0	6.7	58.4	5.9	68.3	8.6	61.8	4.3	59.5	4.8	
		Authority	60.4	6.7	62.0	8.3	66.8	10.2	63.8	5.7	65.8	10.4	
		Province	67.5	12.8	67.4	13.3	69.6	14.7	69.3	13.0	72.2	15.8	
	Social Studies 9	School	68.3	10.7	67.6	12.7	69.0	8.9	63.9	8.4	n/a	n/a	
		Authority	68.4	13.6	72.5	16.5	69.7	13.6	71.5	14.3	66.7	0.0	
		Province	71.3	18.3	72.5	18.9	71.4	18.7	71.7	18.9	82.6	26.4	

		Results (in percentages)									
		2005		2006		2007		2008		2009	
		A	E	A	E	A	E	A	E	A	E
Overall	School	64.6	8.7	66.1	11.0	69.6	11.1	66.4	7.4	69.5	9.1
	Authority	73.1	14.3	74.3	14.8	74.4	15.1	73.3	15.5	77.2	18.3
	Province	76.4	18.4	76.0	17.9	75.5	18.6	75.3	18.3	76.8	19.2

Note: Data values have been suppressed where the number of students is less than 6. Suppression is marked with an asterisk (\*).

Aggregated PAT results are based upon a weighted average of Acceptable or Excellence percent meeting standards. The weights are the number of students in the cohort for the course.

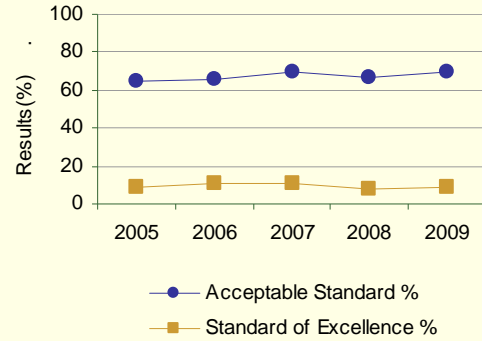
Student Learning Achievement: PAT Values reported are weighted averages of PAT Acceptable and PAT Excellence results. Courses included: ELA (Grades 3, 6, 9), Math (Grades 3, 6, 9), Science (Grades 6, 9), French Language Arts (Grades 6, 9), Français (Grades 6, 9).

\*\* "A" = Acceptable; "E" = Excellence — the percentages achieving the acceptable standard include the percentages achieving the standard of excellence.

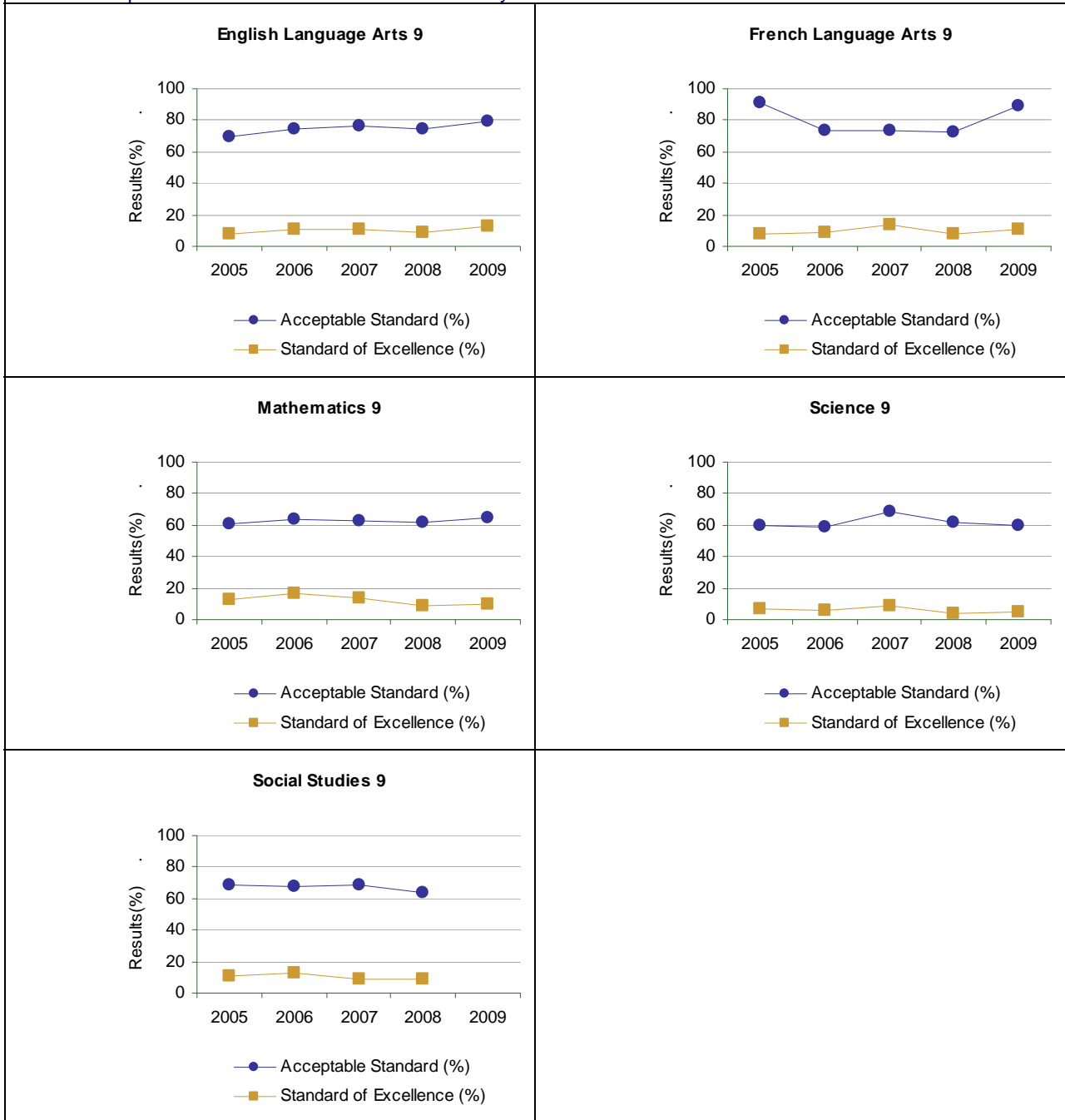
### Comment on Results

- Each department at Lindsay Thurber Comprehensive High School was responsible for the development and implementation of a Pyramid of Interventions with the purpose of improving Grade 9 results
- Lindsay Thurber Comprehensive High School established vertical articulation groups with our feeder schools which looked at numeracy and literacy skills of students transitioning into Lindsay Thurber.
- The administration of the school conducted an extensive review of the PAT results over the last 5 years and shared that study with the appropriate staff with the purpose of designing intervention strategies in each department.
- Link Crew members conducted a number of seminar lessons for Grade 9 students.
- Where results were available Grade 9 classes experienced an increase in achievement with the exception being in Grade 9 Science.

Graph of Overall School Results (optional)



• Graph of Provincial Achievement Test Results by Course



PAT Results Course By Course Summary By Enrolled With Measure Evaluation (optional)

		Lindsay Thurber Comp High Sch							Alberta			
		Achievement	Improvement	Overall	2009		Prev 3 Yr Avg		2009		Prev 3 Yr Avg	
Course	Measure				N	%	N	%	N	%	N	%
English Language Arts 9	Acceptable Standard	Intermediate	Improved	Good	306	79.1	380	75.5	43,675	78.7	44,685	77.1
	Standard of Excellence	Intermediate	Improved	Good	306	12.7	380	10.1	43,675	14.7	44,685	14.4
French Language Arts 9	Acceptable Standard	Intermediate	Improved Significantly	Good	77	89.6	70	73.5	2,262	81.8	2,286	83.0
	Standard of Excellence	Intermediate	Maintained	Acceptable	77	10.4	70	10.4	2,262	10.3	2,286	12.1
Français 9	Acceptable Standard	n/a	n/a	n/a	n/a	n/a	n/a	n/a	333	85.6	285	84.2
	Standard of Excellence	n/a	n/a	n/a	n/a	n/a	n/a	n/a	333	12.9	285	13.0
Mathematics 9	Acceptable Standard	Intermediate	Maintained	Acceptable	301	65.1	383	62.7	43,118	67.0	44,317	66.5
	Standard of Excellence	Low	Declined	Issue	301	9.6	383	13.0	43,118	18.6	44,317	18.0
Science 9	Acceptable Standard	Low	Maintained	Issue	311	59.5	383	62.8	43,560	72.2	44,505	68.8
	Standard of Excellence	Low	Maintained	Issue	311	4.8	383	6.3	43,560	15.8	44,505	13.7

Note: Data values have been suppressed where the number of students is less than 6. Suppression is marked with an asterisk (\*).

Too few jurisdictions offer Français (Grades 6, 9) for an Achievement Evaluation to be calculated. However, the results from Français (Grades 6, 9) are included in the aggregation of all PAT courses. Achievement Evaluations for Social Studies 6 and Social Studies 9 are not calculated due to the change in the exams.

Outcome: Students demonstrate high standards in learner outcomes. (continued)

Performance Measure			Results (in percentages)				
			2005	2006	2007	2008	2009
Participation rates in provincial achievement tests (PATs) for Grades 3, 6 and 9.							
Grade 9	English Language Arts 9	School	82.0	91.2	90.1	89.7	91.2
		Authority	80.2	89.0	85.9	89.2	91.2
		Province	87.4	87.7	87.9	87.7	89.7
	French Language Arts 9	School	98.5	98.5	95.8	95.9	100.0
		Authority	98.5	98.5	95.8	95.9	100.0
		Province	97.1	95.9	93.7	96.8	95.2
	Français 9	School	n/a	n/a	n/a	n/a	n/a
		Authority	n/a	n/a	n/a	n/a	n/a
		Province	97.4	98.0	96.9	97.8	98.5
	Mathematics 9	School	79.4	82.8	87.3	83.2	84.4
		Authority	79.3	84.2	85.0	86.5	88.1
		Province	87.6	87.3	88.0	88.0	89.8
	Science 9	School	87.8	88.7	90.6	90.6	92.3
		Authority	84.3	86.6	87.0	89.7	91.1
		Province	88.2	88.1	88.8	89.0	90.5
	Social Studies 9	School	90.3	92.7	91.6	92.2	n/a
		Authority	85.4	89.7	88.3	90.9	100.0
		Province	87.8	88.5	88.4	88.9	100.0

Note: Data values have been suppressed where the number of students is less than 6. Suppression is marked with an asterisk (\*).

*Outcome: Students demonstrate high standards in learner outcomes.* (continued)

Performance Measure		Results (in percentages)**									
		2005		2006		2007		2008		2009	
		A	E	A	E	A	E	A	E	A	E
Diploma Exam Results by Students Writing – percentages of students who achieve the acceptable standard and the percentages who achieve the standard of excellence on diploma examinations.											
English Lang Arts 30-1	School	91.3	14.3	90.8	22.2	86.1	20.7	87.1	16.6	95.5	13.6
	Authority	89.8	13.3	89.0	19.8	85.4	17.1	86.3	13.5	90.2	11.1
	Province	89.1	17.8	88.0	19.3	87.7	19.0	87.1	15.5	86.1	12.3
English Lang Arts 30-2	School	91.0	7.4	89.3	8.7	88.4	16.1	89.7	12.5	91.4	12.1
	Authority	93.4	9.4	90.4	9.6	86.6	11.5	91.6	10.0	92.3	12.7
	Province	89.4	10.1	86.1	8.1	88.7	9.7	88.9	8.8	88.2	8.5
French Lang Arts 30-1	School	96.6	27.6	94.4	14.8	91.5	6.4	96.3	11.1	97.5	22.5
	Authority	96.6	27.6	94.4	14.8	91.5	6.4	96.3	11.1	97.5	22.5
	Province	95.1	19.1	95.0	21.8	95.6	23.1	94.9	24.5	95.1	18.9
Français 30	School	n/a	n/a	n/a	n/a	n/a	n/a	n/a	n/a	n/a	n/a
	Authority	n/a	n/a	n/a	n/a	n/a	n/a	n/a	n/a	n/a	n/a
	Province	95.0	16.3	94.8	28.1	97.2	24.6	98.5	25.4	94.7	33.1
Pure Mathematics 30	School	84.1	24.6	78.9	17.3	83.4	20.2	78.3	17.2	80.2	18.7
	Authority	83.5	23.4	83.4	23.1	82.0	19.6	82.4	22.2	83.6	22.6
	Province	80.6	25.7	82.8	26.5	81.1	24.6	81.3	25.8	82.1	26.3
Applied Mathematics 30	School	91.8	31.1	88.1	21.1	88.3	16.2	89.3	25.0	95.2	18.1
	Authority	93.6	32.2	89.7	20.1	86.7	17.1	88.0	19.2	88.9	12.3
	Province	87.6	21.8	77.5	11.8	77.6	12.1	76.4	10.7	79.4	13.5
Social Studies 30	School	75.2	12.8	78.7	12.3	81.7	15.6	69.3	12.7	78.9	14.8
	Authority	78.4	13.4	80.4	11.9	80.4	15.7	70.7	12.4	78.4	12.7
	Province	85.2	24.3	85.5	23.9	86.1	24.6	84.7	21.5	84.2	21.4
Social Studies 33	School	64.7	1.0	79.4	8.1	77.9	7.7	83.2	12.3	83.4	15.3
	Authority	77.1	9.1	82.9	10.5	78.4	11.9	84.6	10.5	83.9	16.5
	Province	85.0	17.6	83.5	19.0	84.8	19.6	85.3	18.9	85.6	20.2
Biology 30	School	80.6	27.9	86.1	29.7	81.0	16.6	81.9	22.1	83.7	23.0
	Authority	83.5	29.3	85.4	33.8	83.7	24.6	84.3	27.1	86.0	29.0
	Province	81.9	26.6	81.4	26.4	83.5	27.4	82.3	26.3	83.0	26.6
Chemistry 30 Old	School	87.1	31.8	86.3	25.3	88.3	37.5	86.6	23.6	n/a	n/a
	Authority	88.0	29.4	89.0	32.0	90.8	35.4	89.3	29.9	57.1	0.0
	Province	88.2	33.4	88.4	37.1	89.3	37.9	89.2	39.2	77.6	19.5
Chemistry 30	School	n/a	n/a	n/a	n/a	n/a	n/a	n/a	n/a	68.2	16.4
	Authority	n/a	n/a	n/a	n/a	n/a	n/a	n/a	n/a	71.1	24.9
	Province	n/a	n/a	n/a	n/a	n/a	n/a	n/a	n/a	76.3	27.7
Physics 30 Old	School	71.6	13.6	85.1	27.7	89.7	23.5	74.3	16.2	n/a	n/a
	Authority	80.7	15.8	87.8	25.9	85.2	20.4	78.0	23.8	30.0	0.0
	Province	84.2	27.8	84.4	30.0	86.1	29.3	85.7	32.0	74.4	25.6
Physics 30	School	n/a	n/a	n/a	n/a	n/a	n/a	n/a	n/a	84.7	25.0
	Authority	n/a	n/a	n/a	n/a	n/a	n/a	n/a	n/a	84.4	24.7
	Province	n/a	n/a	n/a	n/a	n/a	n/a	n/a	n/a	79.3	23.1

Science 30	School	91.1	13.3	78.9	19.3	66.7	11.1	85.3	14.7	88.2	20.6
	Authority	91.2	18.6	83.9	17.9	81.0	17.9	88.8	12.5	88.5	19.5
	Province	88.1	22.1	82.8	17.3	87.1	18.0	88.6	21.6	86.0	20.9

		Results (in Percentages)									
		2005		2006		2007		2008		2009	
		A	E	A	E	A	E	A	E	A	E
<b>Overall</b>	School	83.4	17.8	84.4	17.1	83.7	16.3	82.4	16.0	86.6	16.7
	Authority	85.3	18.3	85.6	18.1	83.2	17.0	83.6	16.1	86.1	17.0
	Province	85.5	21.2	84.2	20.7	84.8	20.9	84.4	19.4	84.4	19.1

Note: Data values have been suppressed where the number of students is less than 6. Suppression is marked with an asterisk (\*).

Aggregated Diploma results are based upon a weighted average of Acceptable or Excellence percent meeting standards. The weights are the number of students writing the Diploma Examination for each course.

\*\* "A" = Acceptable; "E" = Excellence — the percentages achieving the acceptable standard include the percentages achieving the standard of excellence.

Diploma Exam Results Course By Course Summary With Measure Evaluation (optional)

		Lindsay Thurber Comp High Sch						Alberta				
		Achievement	Improvement	Overall	2009		Prev 3 Yr Avg		2009		Prev 3 Yr Avg	
Course	Measure				N	%	N	%	N	%	N	%
English Lang Arts 30-1	Acceptable Standard	High	Improved Significantly	Good	220	95.5	238	88.0	28,330	86.1	28,021	87.6
	Standard of Excellence	Intermediate	Declined	Issue	220	13.6	238	19.8	28,330	12.3	28,021	17.9
English Lang Arts 30-2	Acceptable Standard	High	Maintained	Good	140	91.4	133	89.1	13,473	88.2	12,858	87.9
	Standard of Excellence	Very High	Maintained	Excellent	140	12.1	133	12.4	13,473	8.5	12,858	8.9
French Lang Arts 30-1	Acceptable Standard	Intermediate	Maintained	Acceptable	40	97.5	52	94.1	1,245	95.1	1,206	95.2
	Standard of Excellence	High	Improved	Good	40	22.5	52	10.8	1,245	18.9	1,206	23.1
Français 30	Acceptable Standard	n/a	n/a	n/a	n/a	n/a	n/a	n/a	133	94.7	123	96.8
	Standard of Excellence	n/a	n/a	n/a	n/a	n/a	n/a	n/a	133	33.1	123	26.1
Pure Mathematics 30	Acceptable Standard	Intermediate	Maintained	Acceptable	182	80.2	182	80.2	22,197	82.1	22,435	81.7
	Standard of Excellence	Intermediate	Maintained	Acceptable	182	18.7	182	18.2	22,197	26.3	22,435	25.7
Applied Mathematics 30	Acceptable Standard	Very High	Improved	Excellent	83	95.2	101	88.5	10,429	79.4	9,994	77.1
	Standard of Excellence	High	Maintained	Good	83	18.1	101	20.8	10,429	13.5	9,994	11.5
Social Studies 30	Acceptable Standard	Low	Maintained	Issue	209	78.9	235	76.6	22,845	84.2	23,756	85.4
	Standard of Excellence	Low	Maintained	Issue	209	14.8	235	13.5	22,845	21.4	23,756	23.3
Social Studies 33	Acceptable Standard	Intermediate	Maintained	Acceptable	157	83.4	132	80.2	15,101	85.6	15,045	84.5
	Standard of Excellence	Intermediate	Improved	Good	157	15.3	132	9.3	15,101	20.2	15,045	19.1
Biology 30	Acceptable Standard	Intermediate	Maintained	Acceptable	178	83.7	157	83.0	21,088	83.0	20,835	82.4
	Standard of Excellence	Intermediate	Maintained	Acceptable	178	23.0	157	22.8	21,088	26.6	20,835	26.7
Science 30	Acceptable Standard	Intermediate	Improved	Good	34	88.2	39	77.0	4,476	86.0	3,721	86.2
	Standard of Excellence	Intermediate	Maintained	Acceptable	34	20.6	39	15.0	4,476	20.9	3,721	19.0

Note: Data values have been suppressed where the number of students is less than 6. Suppression is marked with an asterisk (\*).

Too few jurisdictions offer Français 30 for an Achievement Evaluation to be calculated. However, the results from Français 30 are included in the aggregation of all Diploma courses. Achievement Evaluations for Physics 30 and Chemistry 30 are not calculated due to the change in the exams.

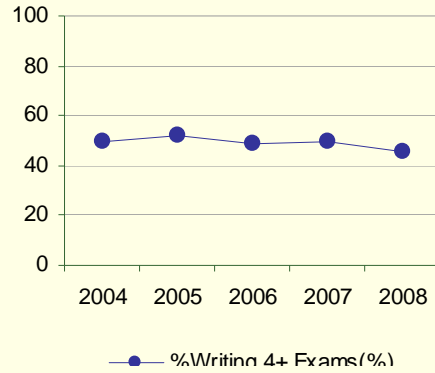
Outcome: Students demonstrate high standards in learner outcomes. (continued)

Performance Measure		Results (in percentages)				
		2004	2005	2006	2007	2008
Diploma examination participation rate: Percentages of students who have written four or more diploma exams by the end of their third year of high school.	School	50.0	51.9	49.1	49.3	45.6
	Authority	49.4	50.4	48.9	49.6	46.1
	Province	52.4	53.5	53.7	53.6	53.3

Comment on Results

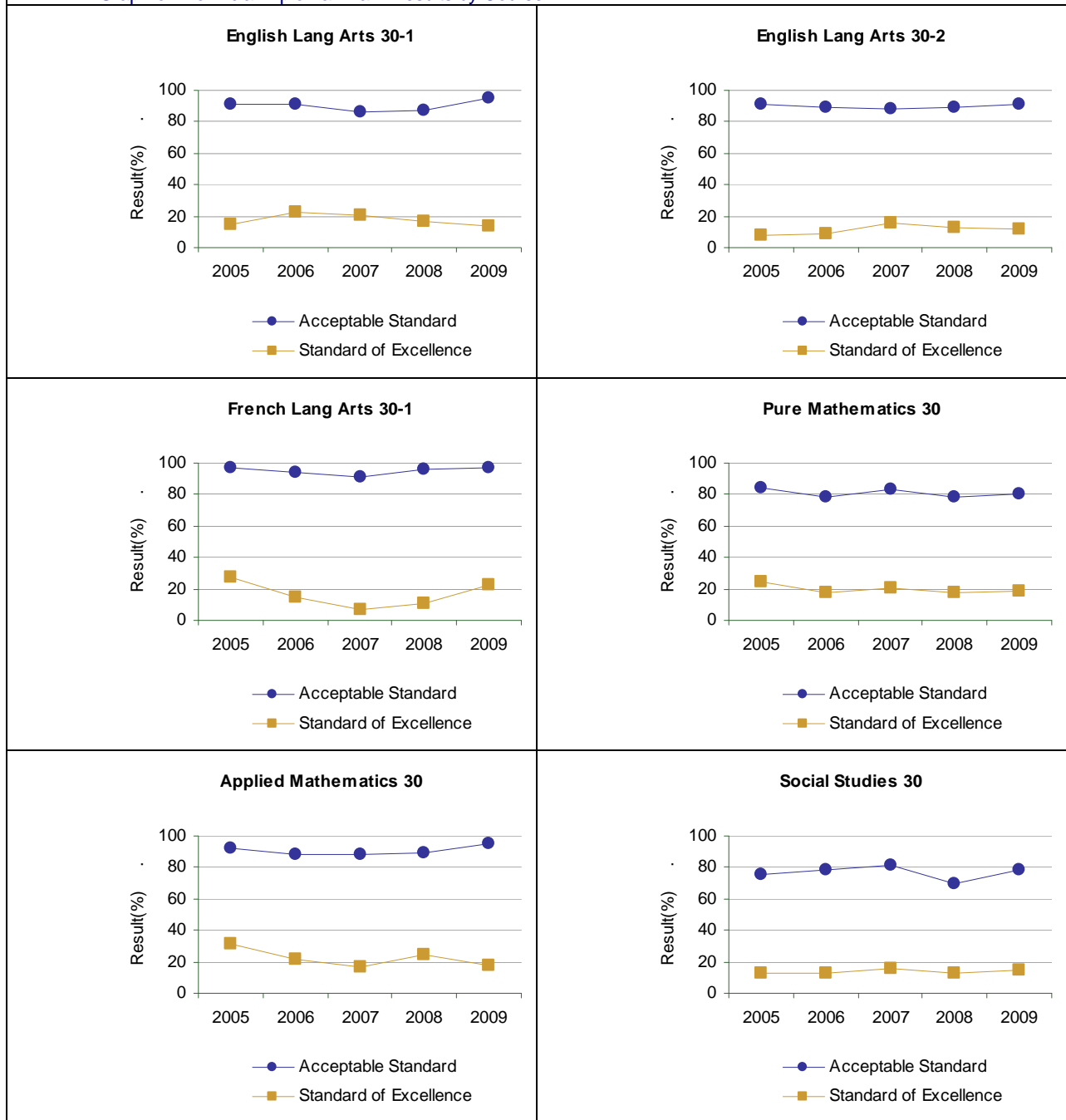
- Each department at Lindsay Thurber Comprehensive High School was responsible for the development and implementation of a Pyramid of Interventions with the purpose of improving Grade 12 results
- The administration of the school conducted an extensive review of the PDE results over the last 5 years and shared that study with the appropriate staff with the purpose of designing intervention strategies in each department.
- Where results were available Grade 12 courses experienced an increase at the Acceptable Standard in all courses during the 2008 -2009 writing.
- Where results were available Grade 12 courses experienced an increase at the Excellence Standard in 4 courses during the 2008 -2009 writing.

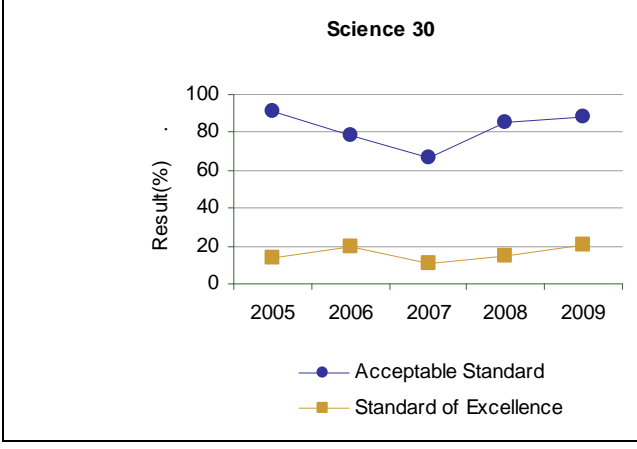
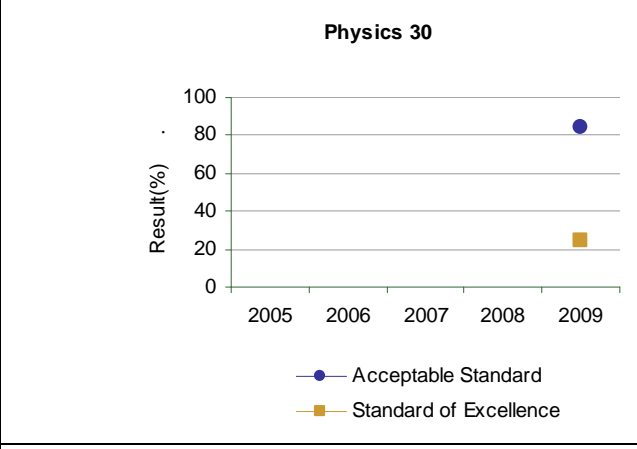
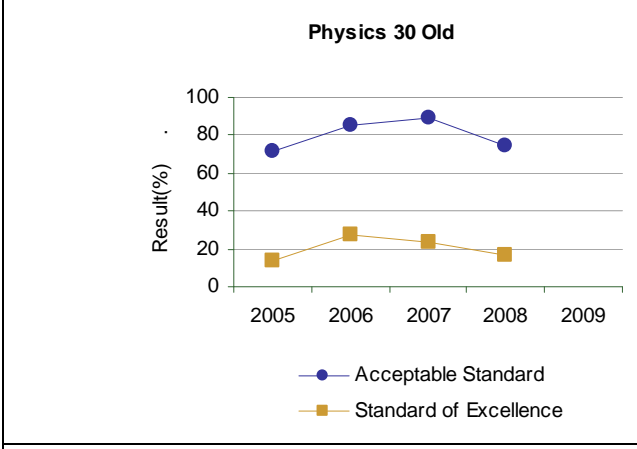
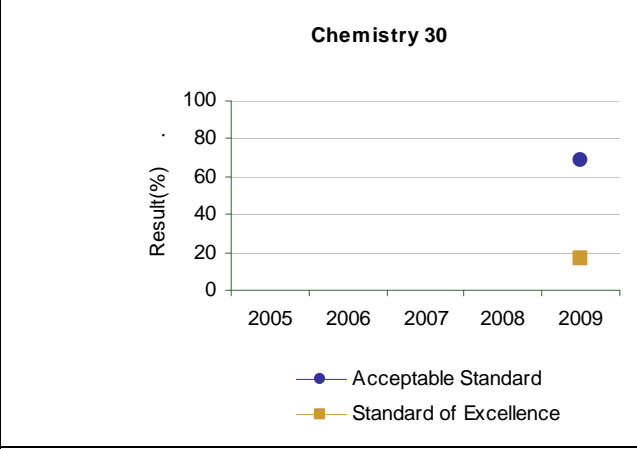
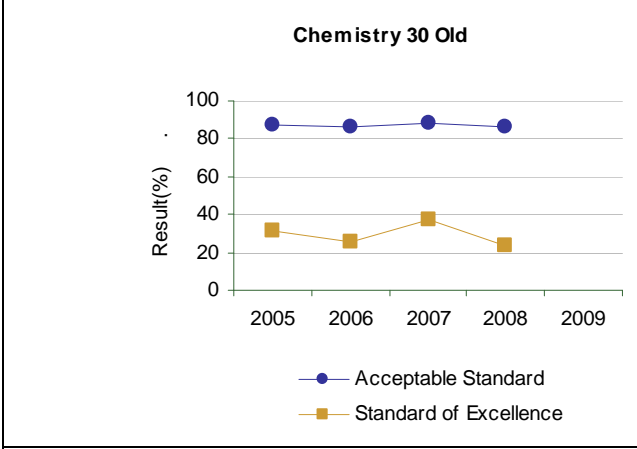
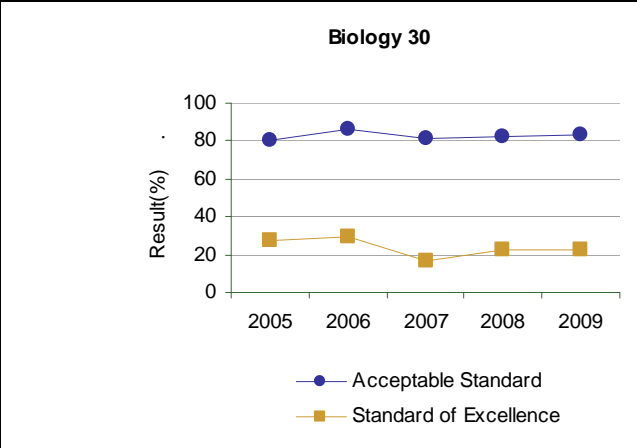
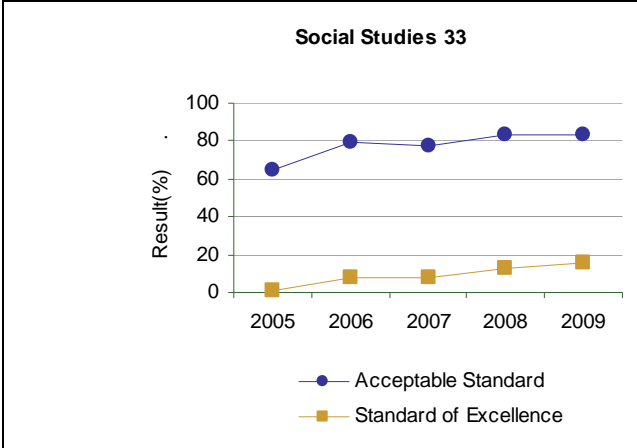
Graph of Overall School Results (optional)



Note: Data values have been suppressed where the number of respondents is less than 6. Suppression is marked with an asterisk (\*).

• Graph of Provincial Diploma Exam Results by Course





Percentage of students writing 0 to 6 or more Diploma Examinations by the end of their 3rd year of high school (optional)

	Lindsay Thurber Comp High Sch					Alberta				
	2004	2005	2006	2007	2008	2004	2005	2006	2007	2008
<b>N</b>	<b>479</b>	<b>443</b>	<b>490</b>	<b>425</b>	<b>439</b>	<b>43,221</b>	<b>43,032</b>	<b>43,930</b>	<b>44,661</b>	<b>45,432</b>
% Writing 0 Exams	19.7	18.3	16.9	21.5	20.0	18.3	18.1	17.8	18.0	18.4
% Writing 1+ Exams	80.3	81.7	83.1	78.5	80.0	81.7	81.9	82.2	82.0	81.6
% Writing 2+ Exams	74.9	78.5	78.8	74.9	74.5	77.9	78.3	78.5	78.6	78.0
% Writing 3+ Exams	60.6	65.7	62.4	61.8	61.2	64.1	65.6	65.6	65.6	64.9
<b>% Writing 4+ Exams</b>	<b>50.0</b>	<b>51.9</b>	<b>49.1</b>	<b>49.3</b>	<b>45.6</b>	<b>52.4</b>	<b>53.5</b>	<b>53.7</b>	<b>53.6</b>	<b>53.3</b>
% Writing 5+ Exams	31.1	33.5	29.6	29.2	28.2	33.9	34.5	34.6	34.7	34.3
% Writing 6+ Exams	14.5	13.6	15.8	12.6	11.9	12.8	12.8	13.0	13.2	12.7

Percentage of students writing 1 or more Diploma Examinations by the end of their 3rd year of high school, by course and subject. (optional)

	Lindsay Thurber Comp High Sch					Alberta				
	2004	2005	2006	2007	2008	2004	2005	2006	2007	2008
<b>N</b>	<b>479</b>	<b>443</b>	<b>490</b>	<b>425</b>	<b>439</b>	<b>43,221</b>	<b>43,032</b>	<b>43,930</b>	<b>44,661</b>	<b>45,432</b>
English 30/30-1	52.2	52.8	52.0	51.3	47.8	53.4	54.4	54.7	54.5	53.8
English 33/30-2	22.8	26.0	26.5	23.5	27.3	24.4	23.7	23.5	23.6	24.0
<b>Total of 1 or more English Diploma Exams</b>	<b>74.1</b>	<b>78.3</b>	<b>77.8</b>	<b>74.1</b>	<b>73.6</b>	<b>76.6</b>	<b>76.9</b>	<b>77.1</b>	<b>77.0</b>	<b>76.7</b>
Social 30	48.2	58.7	55.1	50.8	43.7	47.8	49.1	49.5	49.3	48.1
Social 33	28.0	20.1	23.1	23.3	32.8	30.3	29.1	28.8	28.8	29.5
<b>Total of 1 or more Social Diploma Exams</b>	<b>74.9</b>	<b>77.9</b>	<b>77.6</b>	<b>74.1</b>	<b>75.6</b>	<b>76.9</b>	<b>77.0</b>	<b>77.2</b>	<b>77.2</b>	<b>76.7</b>
Math 30/Pure	37.2	35.7	37.6	34.1	33.9	39.5	41.1	41.9	41.7	41.1
Math 33/Applied	20.9	25.5	21.6	22.1	21.6	20.0	19.9	19.5	19.5	19.1
<b>Total of 1 or more Math Diploma Exams</b>	<b>56.8</b>	<b>60.5</b>	<b>59.0</b>	<b>55.8</b>	<b>54.7</b>	<b>58.9</b>	<b>60.4</b>	<b>60.7</b>	<b>60.7</b>	<b>59.7</b>
Biology 30	34.7	35.9	35.3	32.9	32.1	38.7	39.4	39.6	39.8	39.1
Chemistry 30	31.5	33.2	28.6	30.8	28.7	33.9	34.4	34.2	34.3	34.5
Physics 30	22.3	20.1	16.9	16.2	13.7	21.5	21.6	21.6	21.5	20.4
Science 30	7.9	9.3	9.6	5.9	6.6	6.7	7.0	7.0	7.0	7.4
<b>Total of 1 or more Science Diploma Exams</b>	<b>52.8</b>	<b>54.9</b>	<b>53.1</b>	<b>50.6</b>	<b>49.2</b>	<b>55.5</b>	<b>56.6</b>	<b>56.7</b>	<b>56.5</b>	<b>56.1</b>
Français 30	0.0	0.0	0.0	0.0	0.0	0.2	0.2	0.2	0.2	0.2
French Language Arts 30	5.8	6.1	10.6	10.6	12.3	2.3	2.4	2.7	2.7	2.7
<b>Total of 1 or more French</b>	<b>5.8</b>	<b>6.1</b>	<b>10.6</b>	<b>10.6</b>	<b>12.3</b>	<b>2.5</b>	<b>2.6</b>	<b>2.9</b>	<b>2.9</b>	<b>2.9</b>

**Note:**

Data values have been suppressed where the number of students is less than 6. Suppression is marked with an asterisk (\*).

Results are based upon a cohort of grade 10 students who are tracked over time. The table shows the percentage of students in this cohort who complete diploma exams by the end of their third year of high school.

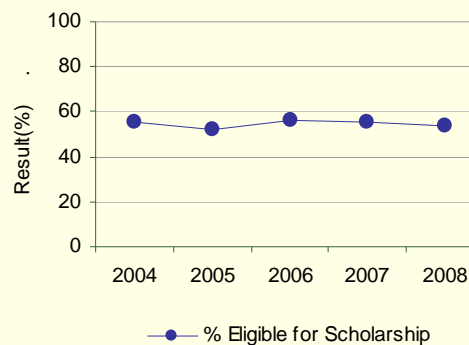
Outcome: Students demonstrate high standards in learner outcomes. (continued)

Performance Measure		Results (in percentages)				
		2004	2005	2006	2007	2008
Percentages of Grade 12 students who meet the Rutherford Scholarship eligibility criteria.	School	55.6	52.1	56.1	55.7	53.4
	Authority	51.3	51.2	53.9	52.6	52.3
	Province	52.9	54.6	56.1	56.8	57.3

#### Comment on Results

- There is an increase in the number of students who are writing one exam in comparison to those writing no exams which indicates that more of the students registered in the Knowledge and Employability are transitioning in to a diploma program.
- The students at Lindsay Thurber Comprehensive High School are increasingly choosing the second stream in English, Social Studies and Science (Science 30) .

#### Graph of Overall School Results (optional)



Note: Data values have been suppressed where the number of respondents is less than 6. Suppression is marked with an asterisk (\*).

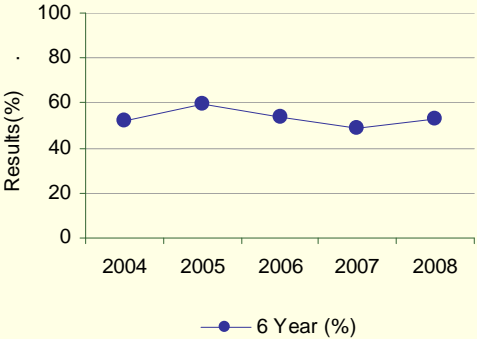
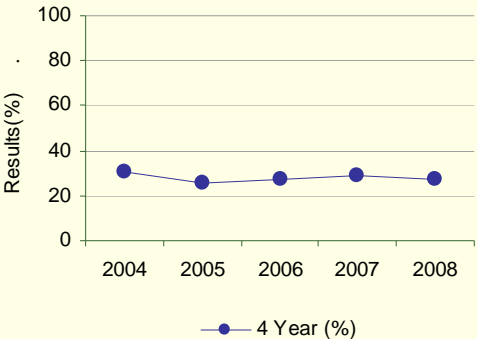
Outcome: Students are well prepared for lifelong learning.

Performance Measure			Results (in percentages)				
			2004	2005	2006	2007	2008
High school to post-secondary transition rate within four and six years of entering Grade 10.	Within 6 Years	School	51.7	59.1	53.4	49.1	53.1
		Authority	50.4	60.0	52.9	50.3	51.3
		Province	54.4	57.5	59.5	60.3	60.7
	Within 4 Years	School	30.6	25.5	27.3	29.0	27.6
		Authority	29.8	26.9	27.5	30.6	28.7
		Province	34.0	37.0	39.5	40.7	40.3

**Comment on Results**

- Each student in Grade 10 through 12 completed CTR 1010 which is a job preparation module.
- Each student in Grade 10 -12 completed CTR 1210 which is a job safety program.
- Students from Lindsay Thurber Comprehensive High School are entering the work of work after graduation and then returning to an educational institution.

**Graph of Overall School Results (optional)**



Note: Data values have been suppressed where the number of respondents is less than 6. Suppression is marked with an asterisk (\*).

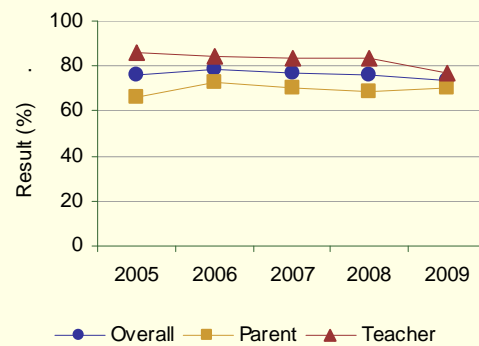
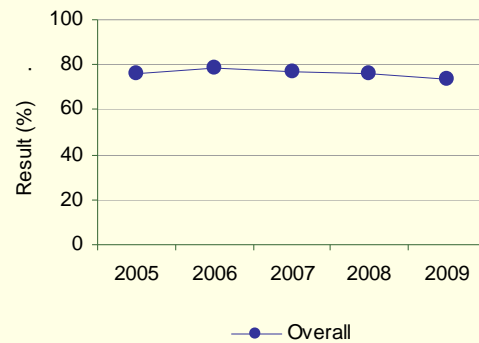
Outcome: Students are well prepared for lifelong learning. (continued)

Performance Measure			Results (in percentages)				
			2005	2006	2007	2008	2009
Percentage of teacher and parent satisfaction that high school graduates demonstrate the knowledge, skills and attitudes necessary for lifelong learning.	Overall (required)	School	75.8	78.4	76.9	76.1	73.3
		Authority	67.4	70.2	70.2	70.8	68.1
		Province	64.4	66.1	65.6	66.7	67.4
	Teacher (optional)	School	85.7	84.2	83.8	83.3	76.6
		Authority	75.9	78.2	76.4	78.5	76.0
		Province	73.7	74.2	74.1	73.8	74.0
	Parent (optional)	School	65.9	72.7	69.9	68.9	70.0
		Authority	58.9	62.1	64.0	63.0	60.2
		Province	55.1	57.9	57.1	59.5	60.8

Comment on Results

- Parents and Staff are satisfied that the school is preparing students for lifelong learning.

Graph of Overall School Results (optional)



Note: Data values have been suppressed where the number of respondents is less than 6. Suppression is marked with an asterisk (\*).

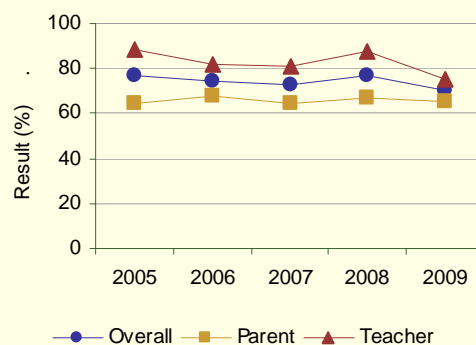
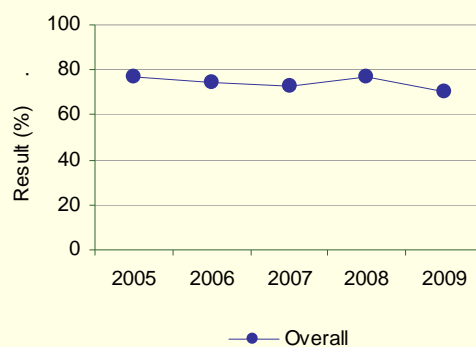
Outcome: *Students are well prepared for employment.*

Performance Measure			Results (in percentages)				
			2005	2006	2007	2008	2009
Percentages of teachers and parents who agree that students are taught attitudes and behaviours that will make them successful at work when they finish school.	Overall (required)	School	76.7	74.6	72.8	77.1	70.0
		Authority	78.0	79.3	83.0	82.8	80.3
		Province	74.9	77.0	77.1	80.1	79.6
	Teacher (optional)	School	88.6	81.6	81.1	87.5	75.0
		Authority	90.7	92.3	92.9	92.1	88.1
		Province	89.1	89.4	89.2	89.3	88.9
	Parent (optional)	School	64.8	67.6	64.5	66.7	65.1
		Authority	65.4	66.4	73.2	73.4	72.5
		Province	60.8	64.6	65.1	70.9	70.2

**Comment on Results**

- Each student in Grade 10 through 12 completed CTR 1010 which is a job preparation module.
- Each student in Grade 10 -12 completed CTR 1210 which is a job safety program.

**Graph of Overall School Results (optional)**



Note: Data values have been suppressed where the number of respondents is less than 6. Suppression is marked with an asterisk (\*).

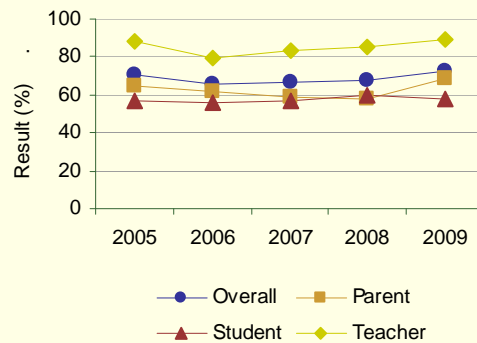
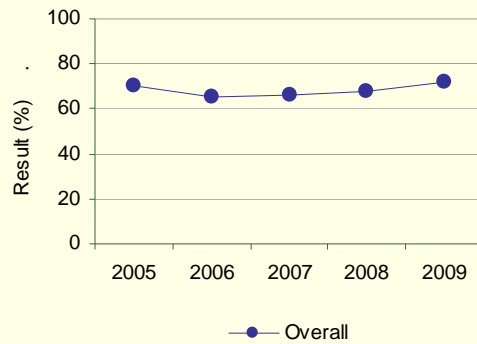
Outcome: Students model the characteristics of active citizenship.

Performance Measure			Results (in percentages)				
			2005	2006	2007	2008	2009
Percentages of teachers, parents and students who are satisfied that students model the characteristics of active citizenship.	Overall (required)	School	70.2	65.7	66.4	67.5	72.1
		Authority	75.3	78.0	79.3	80.2	80.0
		Province	75.3	76.8	76.6	77.9	80.3
	Teacher (optional)	School	88.6	79.9	83.0	85.7	88.8
		Authority	91.9	94.0	93.9	94.0	93.8
		Province	89.5	90.3	89.9	90.6	91.8
	Parent (optional)	School	65.1	61.7	59.3	57.4	69.1
		Authority	72.4	70.9	74.8	74.8	75.6
		Province	70.3	72.4	72.6	74.7	77.4
	Student (optional)	School	57.0	55.4	57.1	59.4	58.3
		Authority	61.6	69.2	69.1	71.8	70.7
		Province	66.1	67.5	67.1	68.5	71.8

Comment on Results

- Lindsay Thurber Comprehensive High School's parents, staff and students are increasingly satisfied with the Leadership program and Link Crew as a strategy for developing the characteristics of citizenship in our students.
- The volunteer programs in the Tri-High Mentorship and the CALM 20 programs is having an impact on the perception of the citizenship characteristics of our students.

Graph of Overall School Results (optional)



Note: Data values have been suppressed where the number of respondents is less than 6. Suppression is marked with an asterisk (\*).

Also report results on all local authority/school Goal Two measures from the authority's/school's Three-Year Education Plan 2008/09 – 2010/11 in relation to Goal 2, Goal 2 outcomes and targets for 2008/09. Minimum one year of results – schools are encouraged to provide multi-year results for trend analysis.

## Goal Three: Highly Responsive and Responsible Jurisdiction

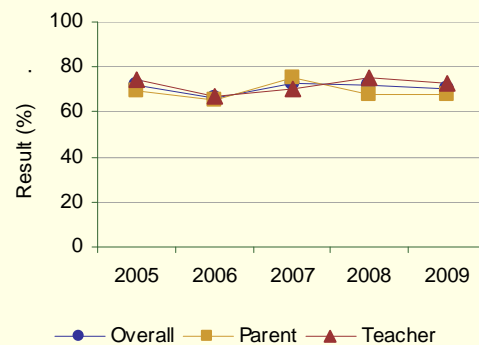
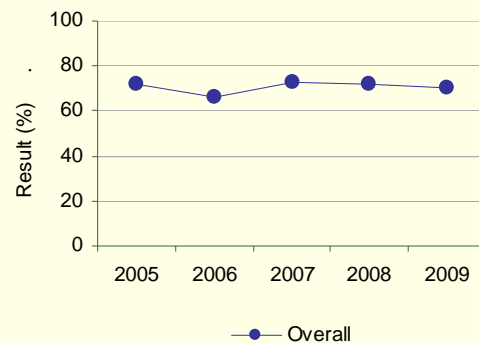
*Outcome: The authority demonstrates effective working relationships.*

Performance Measure		Results (in percentages)					
		2005	2006	2007	2008	2009	
Percentage of teachers and parents satisfied with parental involvement in decisions about their child's education.	Overall (required)	School	71.7	66.3	72.9	71.6	70.4
		Authority	80.2	80.8	81.4	81.3	79.1
		Province	76.1	77.9	77.5	78.2	80.1
	Teacher (optional)	School	74.3	67.2	70.5	75.3	72.9
		Authority	90.1	88.6	89.1	89.9	87.4
		Province	87.0	87.6	87.1	87.5	88.0
	Parent (optional)	School	69.1	65.4	75.3	67.8	67.8
		Authority	70.3	73.0	73.7	72.6	70.7
		Province	65.2	68.1	67.9	69.0	72.2

### Comment on Results

- Lindsay Thurber Comprehensive High School has seen a significant increase in E-link usage by the parents of our students.
- The focus of the school education plan for 2009 – 2010 is increasing parental involvement in the school.

### Graph of Overall School Results (optional)



Note: Data values have been suppressed where the number of respondents is less than 6. Suppression is marked with an asterisk (\*).

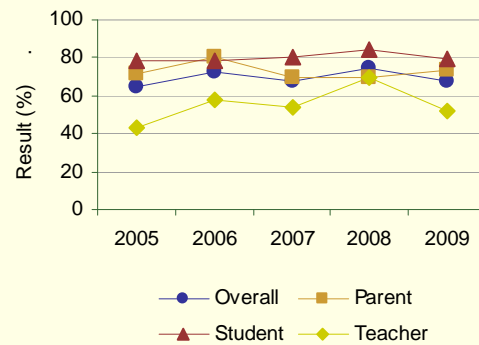
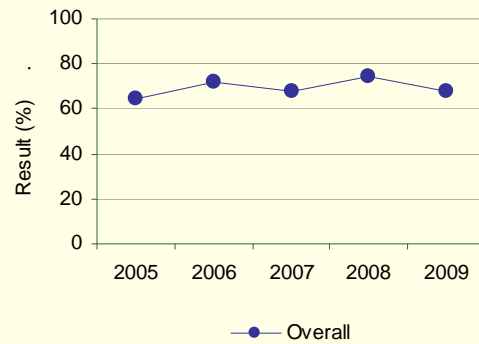
Outcome: The authority demonstrates leadership and continuous improvement.

Performance Measure			Results (in percentages)				
			2005	2006	2007	2008	2009
Percentages of teachers, parents and students indicating that their school and schools in their jurisdiction have improved or stayed the same the last three years.	Overall (required)	School	64.3	72.3	68.1	74.4	68.1
		Authority	76.3	81.4	81.1	83.1	80.0
		Province	73.9	76.8	76.3	77.0	79.4
	Teacher (optional)	School	42.9	57.9	53.8	69.6	51.6
		Authority	76.3	82.4	78.0	81.5	75.9
		Province	73.1	75.5	74.5	75.6	78.2
	Parent (optional)	School	71.9	80.4	69.7	69.5	73.2
		Authority	75.8	79.4	82.0	82.2	79.6
		Province	70.9	75.4	75.1	75.9	78.1
	Student (optional)	School	78.0	78.7	80.7	84.1	79.5
		Authority	76.7	82.5	83.3	85.6	84.4
		Province	77.9	79.4	79.3	79.5	81.8

Comment on Results

- The parents of Lindsay Thurber Comprehensive High School believes that the Red Deer Public School jurisdiction and it's schools have improved over the past three years while students and teachers have some reservations.

Graph of Overall School Results (optional)



Note: Data values have been suppressed where the number of respondents is less than 6. Suppression is marked with an asterisk (\*).

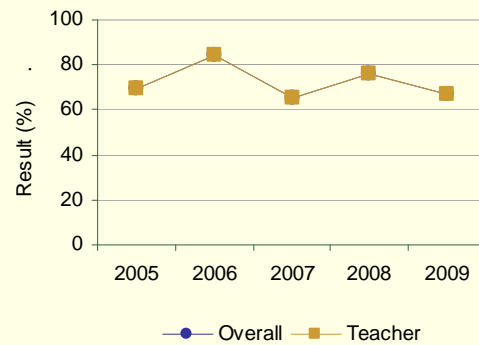
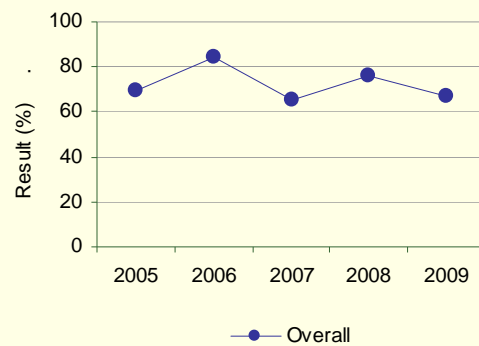
Outcome: *The authority demonstrates leadership and continuous improvement. (continued)*

Performance Measure			Results (in percentages)				
			2005	2006	2007	2008	2009
The percentage of teachers reporting that in the past 3-5 years the professional development and in-servicing received from the school authority has been focused, systematic and contributed significantly to their ongoing professional growth.	Overall (required)	School	69.5	84.1	64.9	75.7	67.2
		Authority	87.1	91.3	82.7	86.4	85.5
		Province	76.5	78.2	78.8	80.4	81.5
	Teacher (optional)	School	69.5	84.1	64.9	75.7	67.2
		Authority	87.1	91.3	82.7	86.4	85.5
		Province	76.5	78.2	78.8	80.4	81.5

#### Comment on Results

- Teachers at Lindsay Thurber Composite High School have expressed concern regarding the professional development opportunities that has been provided for them in the past year.

#### Graph of Overall School Results (optional)



Note: Data values have been suppressed where the number of respondents is less than 6. Suppression is marked with an asterisk (\*).

Also report:

- results on all local authority/school Goal Three measures from the authority and school Three-Year Education Plan 2008/09 – 2010/11 in relation to Goal 3, Goal 3 outcomes and targets for 2008/09. Minimum one year of results – Schools are encouraged to provide multi-year results for trend analysis.

**Red Deer Public Schools  
 Budget Report  
 For the Period Sept 1, 2009 to Aug 31, 2010**

October 13, 2009

School LTCHS

**Revenue (Allocations In)**

<b>Program Allocations</b> (includes all totals from Basic Programs and Miscellaneous Addbacks, excluding AISI)	<b>\$8,688,175</b>
<b>AISI</b> (includes Prior Yr Surplus and current yr amt)	<b>\$170,000</b>
<b>Other Revenue</b>	<b>\$913,747</b>
<b>Program Fee Revenue</b>	<b>\$123,600</b>
<b>Transfers from Other Sites</b>	<b>\$1,977,287</b>

**Total Allocations In**

**\$11,872,809**

**Expenditures**

<b>Certificated Staffing</b> (excluding AISI)	<b>\$8,442,916</b>
<b>Uncertificated Staffing</b>	<b>\$1,807,286</b>
<b>AISI</b> (includes total AISI expenditures)	<b>\$170,000</b>
<b>Miscellaneous Personnel</b>	<b>\$51,318</b>
<b>Contracted and General</b>	<b>\$414,231</b>
<b>Supplies</b>	<b>\$796,058</b>
<b>Furniture &amp; Equipment</b>	<b>\$121,000</b>
<b>School Generated Expenses</b>	<b>\$70,000</b>

**Total Expenditures**

**\$11,872,809**

**Net Surplus / (Deficit)**

**\$0**

---

**Lindsay Thurber Comprehensive High School  
School Council Annual Report 2008 - 2009**

The Lindsay Thurber Comprehensive High School Council (the Council) held its Annual General Meeting on September 29, 2008 with the remaining meetings taking place on October 27<sup>th</sup>, November 24<sup>th</sup>, January 26<sup>th</sup>, March 9<sup>th</sup>, April 6<sup>th</sup>, April 27<sup>th</sup> and June 1<sup>st</sup>.

**Council Executive:**

Chair: Judy-Ann Wybenga  
Vice-Chair: Bernice Capusten

**Appointments for 2008/2009**

Teacher Representatives: Jim Griffin, Heather Jones  
Student Representatives: Meagan McLavish, Jiliane Golczyk  
City Wide School Council Representative: Gerry Halford  
Trustee Liaison: Cathy Peacocke  
District Liaison: Piet Langstraat

Attendance over the course of the school year was good with great dialogue around the table on all agenda items. We would like to acknowledge the superior administrative secretarial work by Cyndi Ramsfield in terms of taking minutes at our meetings, advertising meeting dates plus distributing agendas/attachments throughout the year. Her involvement definitely makes the role of the Chair and Vice-Chair that much more manageable.

Honorable mention also goes to the Student Leadership group under the direction of Meagan McLavish. We had student representation at ALL meetings and the content and caliber of their student based initiatives over the course of the year was inspirational.

Our council flourished this year with Jim Clevette's express desire to seek out the parent perspective on all Council agenda items and focus on better communications with parents. Council's involvement in preparing for the Grade 9 orientation and Principal's reception on August 31, 2009 are great reflections on "learning the Thurber way" and incorporating parent feedback into planned school events.

**Council provided review and feedback on the following Board Policies:**

- 2.01.6 Communications (new)
- 6.01.01 School Year (amendments)

Following are just a few of the agenda items that Council discussed at our meetings throughout the school year:

- School & Council initiatives for "Going Green"
- Policies: Attendance, Grad, Field Trips
- 2008 – 2010 Annual Report/Three Year Plan
- Fees Review Summary & Music Parents Society Questions
- Turbo meeting focusing on improving communication between the school, students and parents
- Bill 44 and its potential impact on open classroom discussions, etc
- Parent – Teacher Interviews Structure

---

It is also noteworthy that Jim Clevette arranged for a selection of guest speakers at Council meetings to serve as a 'draw' to have parents attend our meetings. Speakers included:

- Mike Horembala, Career Counselor
- Pat Mosychuk, on Video Conferencing
- Constable Jane Owen, RCMP Resource Officer
- Lori Irvine, Off Campus Co-ordinator on Career / Trades Expo (May 6, 2009)
- Brian Quigg, Psychologist with Parkland Youth on walk-in clinic Wed evenings

Sincere thanks to all Council members for making the time to attend meetings and share their perspectives and ideas. We did indeed have a great year together "in the library on the last Monday of the month at 7 pm!"

Respectfully submitted by

**Judy-Ann Wybenga**  
LTCHS Council Chair  
September 28, 2009

---

### **Lindsay Thurber High School Council**

A copy of the Annual Education Results Report for Lindsay Thurber Comprehensive High School was provided to members of School Council electronically prior to the November 30<sup>th</sup>, 2009 meeting and placed on the agenda for discussion at that meeting.

### **Class Size Report**

The class size report for Lindsay Thurber Comprehensive High School in the 2008 – 2009 school year for all classes can be found at;

<http://www.rdpsd.ab.ca/OurDistrict/Reports/All.pdf>

The class size report for Lindsay Thurber Comprehensive High School in the 2008 – 2009 school year for core classes can be found at;

<http://www.rdpsd.ab.ca/OurDistrict/Reports/Core.pdf>