



150 LOCKWOOD AVENUE, RED DEER, ALBERTA, CANADA, T4R 2M4 TEL: (403) 342 - 6655 FAX: (403) 341 - 4335

Building Our Future Today

*SCHOOL
RESULTS
REPORT*

2008/2009



October 2009 Accountability Pillar Overall Summary

Goal	Measure Category	Measure Category Evaluation	Measure	Hunting Hills High School			Alberta			Measure Evaluation		
				Current Result	Prev Year Result	Prev 3 yr Average	Current Result	Prev Year Result	Prev 3 Yr Average	Achievement	Improvement	Overall
Goal 1: High Quality Learning Opportunities for All	Safe and Caring Schools	Acceptable	Safe and Caring	83.3	81.8	81.1	86.9	85.1	84.6	Intermediate	Maintained	Acceptable
	Student Learning Opportunities	Good	Program of Studies	85.2	84.9	84.4	80.3	79.4	78.7	Very High	Maintained	Excellent
			Education Quality	84.2	83.5	85.2	89.3	88.2	87.8	Low	Maintained	Issue
			Drop Out Rate	2.9	4.7	4.2	4.8	5.0	4.9	High	Improved	Good
			High School Completion Rate (3 yr)	73.1	74.1	73.0	70.7	71.0	70.6	Intermediate	Maintained	Acceptable
Goal 2: Excellence in Learner Outcomes	Student Learning Achievement (Grades K-9)	Good	PAT: Acceptable	78.1	78.8	78.2	76.8	75.3	75.6	Intermediate	Maintained	Acceptable
			PAT: Excellence	18.8	17.3	16.3	19.2	18.3	18.3	High	Maintained	Good
	Student Learning Achievement (Grades 10-12)	n/a	Diploma: Acceptable	87.5	86.1	87.5	84.4	84.4	84.5	Intermediate	Maintained	Acceptable
			Diploma: Excellence	19.2	17.8	19.6	19.1	19.4	20.3	Intermediate	Maintained	Acceptable
			Diploma Exam Participation Rate (4+ Exams)	52.1	55.0	54.6	53.3	53.6	53.6	Intermediate	Maintained	Acceptable
			Rutherford Scholarship Eligibility Rate (Revised)	57.2	58.1	55.5	57.3	56.8	55.8	Intermediate	n/a	n/a
	Preparation for Lifelong Learning, World of Work, Citizenship	Acceptable	Transition Rate (6 yr)	54.6	57.2	60.4	60.7	60.3	59.1	Intermediate	Declined	Issue
			Work Preparation	80.7	75.6	81.1	79.6	80.1	78.1	High	Maintained	Good
			Citizenship	75.1	70.6	71.8	80.3	77.9	77.1	Intermediate	Improved	Good
Goal 4: Highly Responsive and Responsible Jurisdiction (Ministry)	Parental Involvement	Acceptable	Parental Involvement	75.1	76.3	76.6	80.1	78.2	77.9	Intermediate	Maintained	Acceptable
	Continuous Improvement	Acceptable	School Improvement	77.4	79.8	80.7	79.4	77.0	76.7	High	Declined	Acceptable

Notes:

- 1) Student Learning Achievement: PAT Values reported are weighted averages of PAT Acceptable and PAT Excellence results. Courses included: ELA (Grades 3, 6, 9), Math (Grades 3, 6, 9), Science (Grades 6, 9), French Language Arts (Grades 6, 9), Français (Grades 6, 9).
- 2) Student Learning Achievement: Diploma Exam Values reported are averages of Diploma Acceptable and Diploma Excellence results, weighted by the number of students enrolled in each course.
- 3) Overall evaluations can only be calculated if both improvement and achievement evaluations are available.
- 4) Data values have been suppressed where the number of students is less than 6. Suppression is marked with an asterisk (*).

Goal One: High Quality Learning Opportunities for All

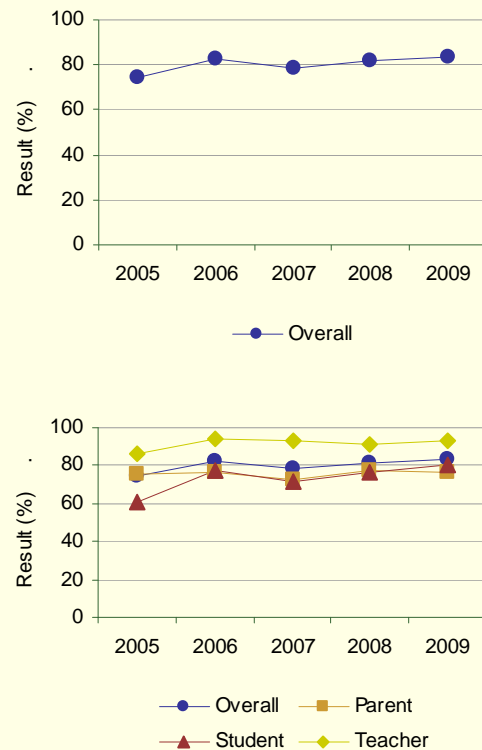
Outcome: Schools provide a safe and caring environment.

Performance Measure			Results (in percentages)				
			2005	2006	2007	2008	2009
Percentage of teacher, parent and student agreement that: students are safe at school, are learning the importance of caring for others, are learning respect for others and are treated fairly in school.	Overall	School	74.3	82.4	78.9	81.8	83.3
		Authority	82.1	84.1	85.2	87.4	86.6
		Province	83.1	84.4	84.2	85.1	86.9
	Teacher	School	86.6	93.9	93.0	91.4	93.3
		Authority	93.0	94.2	93.5	94.9	94.4
		Province	92.3	92.8	92.6	93.1	93.8
	Parent	School	75.1	76.4	72.5	77.3	76.3
		Authority	80.0	79.6	83.1	85.8	85.4
		Province	79.9	82.1	81.7	83.2	85.3
	Student	School	61.1	77.1	71.2	76.7	80.3
		Authority	73.3	78.4	78.9	81.6	80.1
		Province	77.2	78.4	78.5	79.1	81.7

Comment on Results

- Students surveyed indicate significant improvement in the environment of the school over the past five years.
- The Student Leadership program has had a significant impact on the environment of our school. For this reason, we will continue to expand the program over the next few years.
- District survey results as shown below indicate an even higher rating.

Graph of Overall School Results (optional)



Local Parent Survey Result

12. I feel safe at school.	Strongly Agree	30%
	Agree	59%
	Disagree	9%
	Strongly Disagree	2%

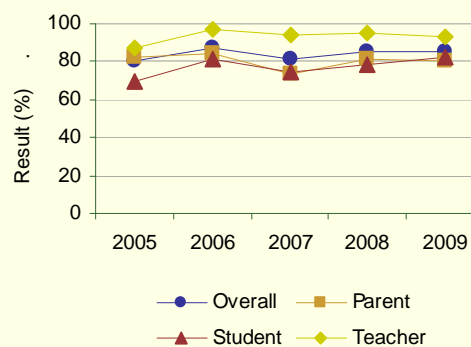
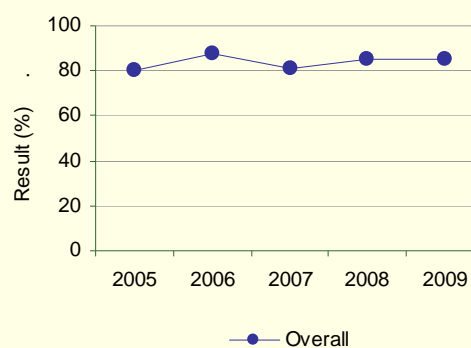
Outcome: *The education system meets the needs of all K–12 students, society and the economy.*

Performance Measure		Results (in percentages)					
		2005	2006	2007	2008	2009	
Percentage of teachers, parents and students satisfied with the opportunity for students to receive a broad program of studies including fine arts, career, technology, and health and physical education.	Overall	School	80.0	87.4	80.9	84.9	85.2
		Authority	82.8	84.9	85.6	85.5	85.8
		Province	76.7	78.1	78.5	79.4	80.3
	Teacher	School	87.5	97.0	94.2	95.5	93.5
		Authority	91.4	92.9	93.4	92.3	90.7
		Province	83.6	85.2	85.7	86.4	86.8
	Parent	School	82.8	84.0	73.5	80.9	80.0
		Authority	83.8	84.8	84.1	83.2	85.5
		Province	75.0	76.6	76.9	77.6	78.7
	Student	School	69.7	81.2	74.9	78.2	82.0
		Authority	73.1	76.9	79.4	81.0	81.1
		Province	71.5	72.6	72.9	74.1	75.3

Comment on Results

- Overall, improvements have been made in this category with significant improvement in the student category.
- Results continue to show results above the province in all cohorts.

Graph of Overall School Results (optional)



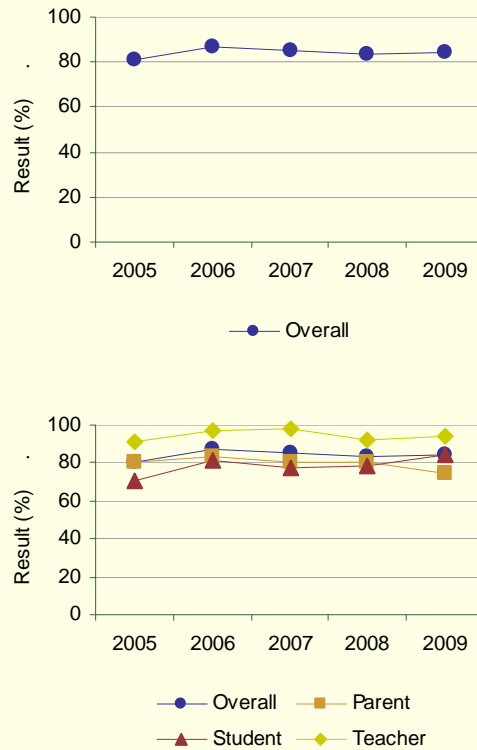
Outcome: *The education system meets the needs of all K–12 students, society and the economy. (continued)*

Performance Measure			Results (in percentages)				
			2005	2006	2007	2008	2009
Percentage of teachers, parents and students satisfied with the overall quality of basic education.	Overall	School	80.7	87.0	85.2	83.5	84.2
		Authority	88.5	89.3	90.2	90.5	89.4
		Province	86.1	87.7	87.6	88.2	89.3
	Teacher	School	90.9	96.8	97.7	91.7	94.4
		Authority	96.4	96.9	96.6	96.9	96.3
		Province	93.9	94.8	94.7	94.9	95.3
	Parent	School	80.6	83.0	80.8	80.0	74.2
		Authority	84.7	84.3	87.4	86.3	84.0
		Province	78.9	81.6	81.8	83.0	84.4
	Student	School	70.7	81.1	77.1	78.9	84.0
		Authority	84.6	86.8	86.6	88.4	87.9
		Province	85.6	86.6	86.4	86.6	88.3

Comment on Results

- Grade 10 parents indicate a level of concern in this category with respect to the provincial standard.
- Local survey results for grade 9 and 12 parents show significant satisfaction with a 91% rating. (Please see below for results on Parent Survey)

Graph of Overall School Results (optional)



Local Parent Survey Result

19. With the overall quality of education your child receives?	Very Satisfied	33%
	Satisfied	58%
	Dissatisfied	6%
	Very Dissatisfied	4%

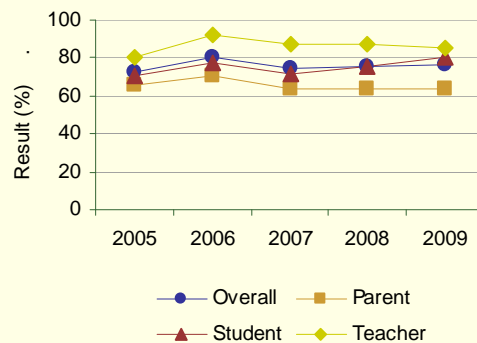
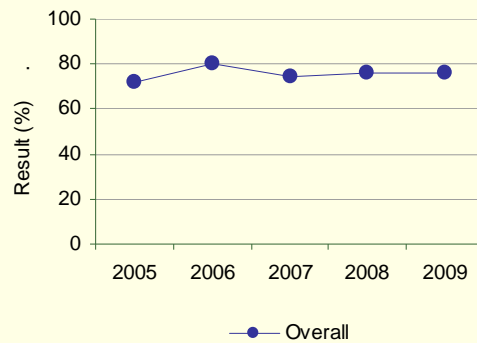
Outcome: The education system meets the needs of all K–12 students, society and the economy. (continued)

Performance Measure			Results (in percentages)				
			2005	2006	2007	2008	2009
Percentage of teacher, parent and student satisfaction with the accessibility, effectiveness and efficiency of programs and services for students in their community.	Overall	School	72.2	80.1	74.3	75.9	76.4
		Authority	68.6	71.7	70.1	70.0	69.9
		Province	67.2	68.5	68.2	69.2	70.3
	Teacher	School	80.6	91.8	87.3	87.7	85.2
		Authority	75.2	77.4	75.9	75.5	74.7
		Province	70.0	71.5	72.0	73.4	74.5
	Parent	School	65.2	70.7	64.2	64.1	64.1
		Authority	57.2	62.0	59.7	56.9	57.1
		Province	54.9	56.9	55.9	56.5	58.1
	Student	School	70.6	77.7	71.4	75.8	80.0
		Authority	73.6	75.6	74.6	77.8	78.0
		Province	76.7	77.1	76.8	77.7	78.4

Comment on Results

- Results indicate gradual improvement over the past 5 years with all categories above provincial.

Graph of Overall School Results (optional)



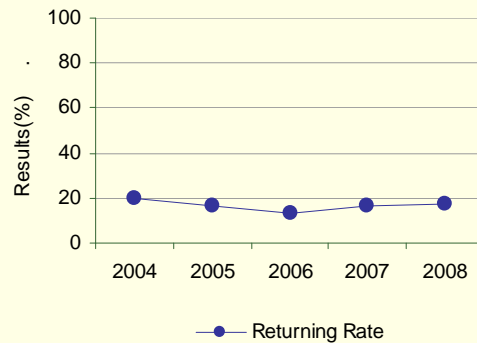
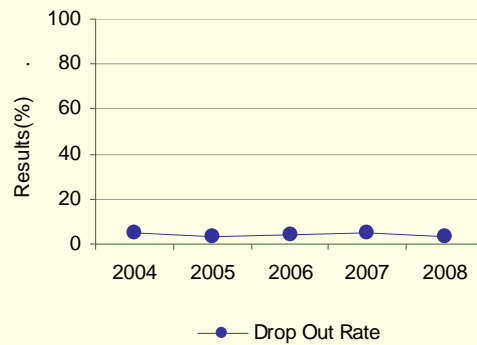
Outcome: Children and youth at risk have their needs addressed through effective programs and supports.

Performance Measure		Results (in percentages)				
		2004	2005	2006	2007	2008
Drop Out Rate - annual dropout rate of students aged 14 to 18 (required).	School	4.7	3.6	4.3	4.7	2.9
	Authority	6.3	5.6	6.0	6.3	4.6
	Province	5.3	5.0	4.7	5.0	4.8
Returning Rate	School	20.1	16.6	13.5	16.7	17.3
	Authority	20.3	21.9	19.8	22.5	15.5
	Province	23.0	21.3	21.2	21.3	19.8

Comment on results

- Recent year showing significant improvement with respect to the drop-out rate and significant improvement with respect to the province.

Graph of Overall School Results (optional)



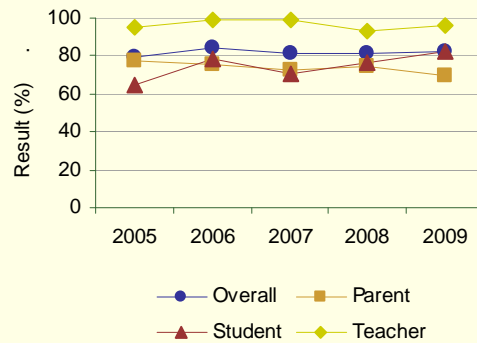
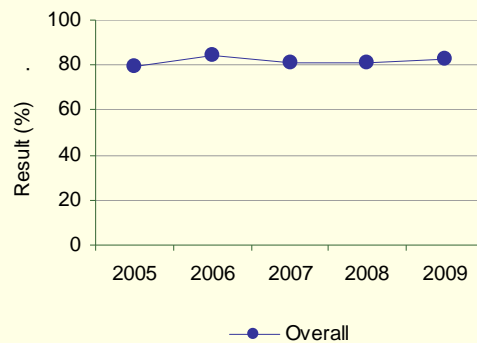
Outcome: Children and youth at risk have their needs addressed through effective programs and supports. (continued)

Performance Measure			Results (in percentages)				
			2005	2006	2007	2008	2009
Percentage of teacher, parent and student agreement that programs for children at risk are easy to access and timely.	Overall	School	79.0	84.0	80.9	81.3	82.6
		Authority	80.7	83.9	82.9	83.2	83.5
		Province	76.9	78.6	78.3	79.5	81.4
	Teacher	School	94.9	98.6	99.1	92.9	95.6
		Authority	94.2	96.5	93.6	93.1	95.0
		Province	90.6	91.6	91.2	91.9	92.5
	Parent	School	77.3	75.1	73.0	74.8	69.3
		Authority	72.1	76.2	76.1	74.1	73.7
		Province	63.8	67.0	66.8	68.5	71.3
	Student	School	64.8	78.3	70.7	76.2	82.8
		Authority	75.7	79.2	79.1	82.5	81.9
		Province	76.1	77.1	77.0	78.0	80.3

Comment on results

- Overall results indicate above provincial performance with gradual growth in recent years.
- Recent parental results indicate a decline in this category.
- Student results indicate continuous improvement with significant overall gain.

Graph of Overall School Results (optional)



Note: Data values have been suppressed where the number of respondents is less than 6. Suppression is marked with an asterisk (*).

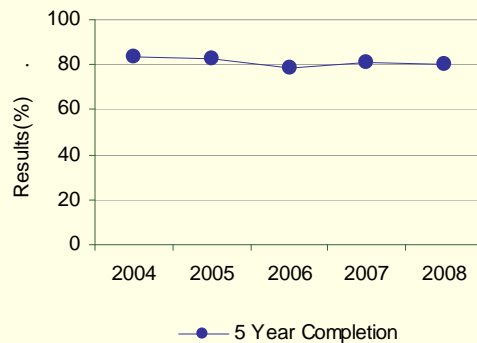
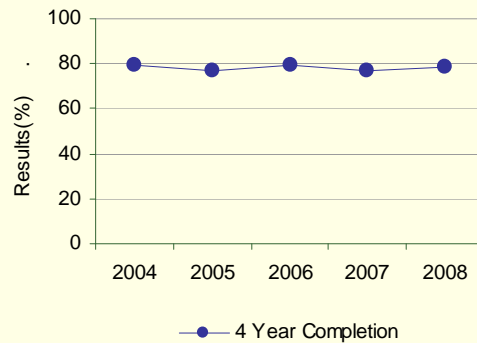
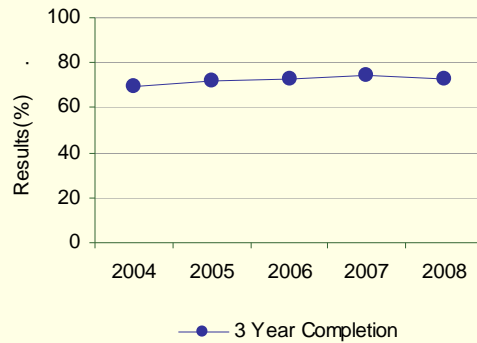
Outcome: Students complete programs.

Performance Measure			Results (in percentages)				
			2004	2005	2006	2007	2008
High School Completion Rate – percentages of students who completed high school within three, four and five years of entering Grade 10.	Within 3 Years	School	69.2	72.3	72.6	74.1	73.1
		Authority	64.9	66.8	68.1	65.9	67.7
		Province	69.3	70.4	70.4	71.0	70.7
	Within 4 Years	School	79.6	76.5	79.4	76.8	78.3
		Authority	74.4	71.1	73.0	73.8	72.1
		Province	73.4	75.1	76.2	76.3	76.5
	Within 5 Years	School	83.4	82.7	78.4	81.1	80.5
		Authority	77.6	77.3	74.4	75.9	77.2
		Province	75.5	77.4	78.6	79.5	79.2

Comment on Results

- Three, four and five year results are consistently above the province.
- Slight improvement in the three year completion is noted.

Graph of Overall School Results (optional)



Note: Data values have been suppressed where the number of respondents is less than 6. Suppression is marked with an asterisk (*).

Goal Two: Excellence in Student Learning Outcomes

Outcome: Students demonstrate high standards in learner outcomes.

Performance Measure		Results (in percentages)**											
PAT Results by Number Enrolled - percentages of students who achieve the acceptable standard and the percentages who achieve the standard of excellence on Grades 3, 6 and 9 Provincial Achievement Tests (cohort results).		2005		2006		2007		2008		2009			
		A	E	A	E	A	E	A	E	A	E		
Grade 9	English Language Arts 9	School	72.2	8.4	80.4	9.1	80.7	15.4	82.5	17.5	84.6	17.5	
		Authority	68.3	7.4	75.3	9.8	73.5	11.3	74.3	11.8	79.1	14.7	
		Province	77.9	14.1	77.4	13.6	77.5	14.8	76.5	14.8	78.7	14.7	
	Mathematics 9	School	72.9	23.6	81.3	18.7	79.7	24.5	81.5	27.2	73.0	23.8	
		Authority	63.8	16.6	68.3	16.3	65.2	16.2	66.0	15.1	65.6	15.5	
		Province	68.0	19.7	67.4	17.4	66.3	18.3	65.7	18.5	67.0	18.6	
	Science 9	School	64.8	7.7	72.2	13.5	73.8	15.0	72.8	8.2	76.5	15.5	
		Authority	60.4	6.7	62.0	8.3	66.8	10.2	63.8	5.7	65.8	10.4	
		Province	67.5	12.8	67.4	13.3	69.6	14.7	69.3	13.0	72.2	15.8	
	Social Studies 9	School	76.0	19.6	84.6	26.7	81.2	23.9	88.3	22.3	n/a	n/a	
		Authority	68.4	13.6	72.5	16.5	69.7	13.6	71.5	14.3	n/a	n/a	
		Province	71.3	18.3	72.5	18.9	71.4	18.7	71.7	18.9	n/a	n/a	

2005 – 2008 include Social Studies data

		Results (in percentages)									
		2005		2006		2007		2008		2009	
		A	E	A	E	A	E	A	E	A	E
Overall	School	73.7	17.0	82.1	18.0	80.5	21.2	84.2	22.2	n/a	n/a
	Authority	73.1	14.3	74.3	14.8	74.4	15.1	73.3	15.5	n/a	n/a
	Province	76.4	18.4	76.0	17.9	75.5	18.6	75.3	18.3	n/a	n/a

Aggregated PAT results are based upon a weighted average of Acceptable or Excellence percent meeting standards. The weights are the number of students in the cohort for the course.

Student Learning Achievement: PAT Values reported are weighted averages of PAT Acceptable and PAT Excellence results. Courses included: ELA (Grades 3, 6, 9), Math (Grades 3, 6, 9), Science (Grades 6, 9), French Language Arts (Grades 6, 9), Français (Grades 6, 9).

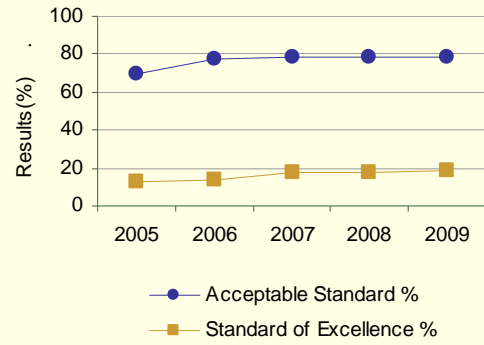
2005 – 2009 exclude Social Studies data

		2005		2006		2007		2008		2009	
		A	E	A	E	A	E	A	E	A	E
Overall (excluding Social Studies)	School	69.9	13.0	77.8	13.6	78.0	18.1	78.8	17.3	78.1	18.8
	Authority	73.1	14.3	74.3	14.8	74.4	15.1	73.3	15.5	77.2	18.3
	Province	76.4	18.4	76.0	17.9	75.5	18.6	75.3	18.3	76.8	19.2

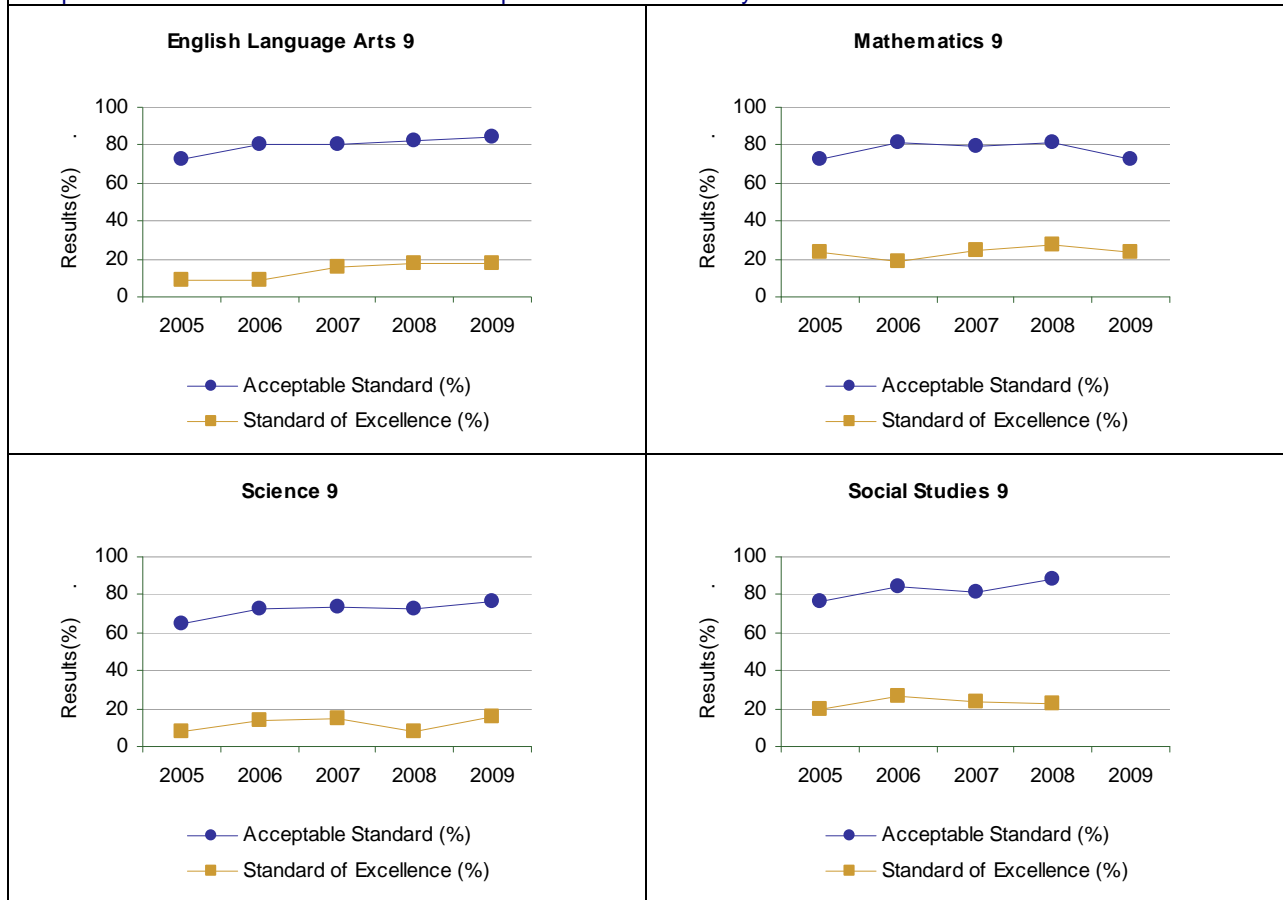
Comment on Results

- *Results indicate continuous improvement over the past five years.*
- *Recent results are at or above the province in all measures.*

Graph of Overall School Results (optional)



Graph of Provincial Achievement Test and Diploma Exam Results by Course



PAT Results Course By Course Summary By Enrolled With Measure Evaluation (optional)

Course	Measure	Hunting Hills High School						Alberta				
		Achievement	Improvement	Overall	2009		Prev 3 Yr Avg		2009		Prev 3 Yr Avg	
					N	%	N	%	N	%	N	%
English Language Arts 9	Acceptable Standard	High	Improved	Good	337	84.6	290	81.2	43,675	78.7	44,685	77.1
	Standard of Excellence	High	Improved	Good	337	17.5	290	14.0	43,675	14.7	44,685	14.4
Mathematics 9	Acceptable Standard	High	Declined Significantly	Issue	315	73.0	265	80.8	43,118	67.0	44,317	66.5
	Standard of Excellence	High	Maintained	Good	315	23.8	265	23.4	43,118	18.6	44,317	18.0
Science 9	Acceptable Standard	High	Improved	Good	341	76.5	296	72.9	43,560	72.2	44,505	68.8
	Standard of Excellence	High	Improved	Good	341	15.5	296	12.3	43,560	15.8	44,505	13.7

Note: Data values have been suppressed where the number of students is less than 6. Suppression is marked with an asterisk (*).

Too few jurisdictions offer Français (Grades 6, 9) for an Achievement Evaluation to be calculated. However, the results from Français (Grades 6, 9) are included in the aggregation of all PAT courses. Achievement Evaluations for Social Studies 6 and Social Studies 9 are not calculated due to the change in the exams.

Outcome: Students demonstrate high standards in learner outcomes. (continued)

Performance Measure		Results (in percentages)					
		2005	2006	2007	2008	2009	
Participation rates in provincial achievement tests (PATs) for Grades 3, 6 and 9.							
Grade 9	English Language Arts 9	School	84.9	91.9	93.9	96.7	96.4
		Authority	80.2	89.0	85.9	89.2	91.2
		Province	87.4	87.7	87.9	87.7	89.7
	Mathematics 9	School	84.8	92.5	95.5	97.6	96.5
		Authority	79.3	84.2	85.0	86.5	88.1
		Province	87.6	87.3	88.0	88.0	89.8
	Science 9	School	87.4	90.3	94.1	97.1	96.8
		Authority	84.3	86.6	87.0	89.7	91.1
		Province	88.2	88.1	88.8	89.0	90.5
	Social Studies 9	School	88.1	93.4	95.9	97.4	n/a
		Authority	85.4	89.7	88.3	90.9	100.0
		Province	87.8	88.5	88.4	88.9	100.0

Outcome: Students demonstrate high standards in learner outcomes. (continued)

Performance Measure		Results (in percentages)**									
		2005		2006		2007		2008		2009	
Diploma Exam Results by Students Writing – percentages of students who achieve the acceptable standard and the percentages who achieve the standard of excellence on diploma examinations.		A	E	A	E	A	E	A	E	A	E
English Lang Arts 30-1	School	90.1	14.1	88.0	18.4	85.1	15.5	86.3	12.3	89.4	10.6
	Authority	89.8	13.3	89.0	19.8	85.4	17.1	86.3	13.5	90.2	11.1
	Province	89.1	17.8	88.0	19.3	87.7	19.0	87.1	15.5	86.1	12.3
English Lang Arts 30-2	School	96.1	12.6	90.9	9.1	84.1	4.9	92.9	8.2	93.1	13.9
	Authority	93.4	9.4	90.4	9.6	86.6	11.5	91.6	10.0	92.3	12.7
	Province	89.4	10.1	86.1	8.1	88.7	9.7	88.9	8.8	88.2	8.5
Pure Mathematics 30	School	86.1	24.1	95.5	34.4	86.7	23.0	87.7	27.7	88.7	28.9
	Authority	83.5	23.4	83.4	23.1	82.0	19.6	82.4	22.2	83.6	22.6
	Province	80.6	25.7	82.8	26.5	81.1	24.6	81.3	25.8	82.1	26.3
Applied Mathematics 30	School	97.1	34.8	92.6	20.0	85.2	19.7	86.7	13.3	81.3	7.5
	Authority	93.6	32.2	89.7	20.1	86.7	17.1	88.0	19.2	88.9	12.3
	Province	87.6	21.8	77.5	11.8	77.6	12.1	76.4	10.7	79.4	13.5
Social Studies 30	School	88.7	15.8	86.8	12.7	81.9	18.1	74.4	13.6	79.7	10.8
	Authority	78.4	13.4	80.4	11.9	80.4	15.7	70.7	12.4	78.4	12.7
	Province	85.2	24.3	85.5	23.9	86.1	24.6	84.7	21.5	84.2	21.4
Social Studies 33	School	85.7	15.0	87.6	11.3	80.4	16.7	84.9	8.6	84.1	17.0
	Authority	77.1	9.1	82.9	10.5	78.4	11.9	84.6	10.5	83.9	16.5
	Province	85.0	17.6	83.5	19.0	84.8	19.6	85.3	18.9	85.6	20.2
Biology 30	School	94.1	37.3	96.0	46.5	94.0	39.7	91.6	35.9	94.0	41.9
	Authority	83.5	29.3	85.4	33.8	83.7	24.6	84.3	27.1	86.0	29.0
	Province	81.9	26.6	81.4	26.4	83.5	27.4	82.3	26.3	83.0	26.6

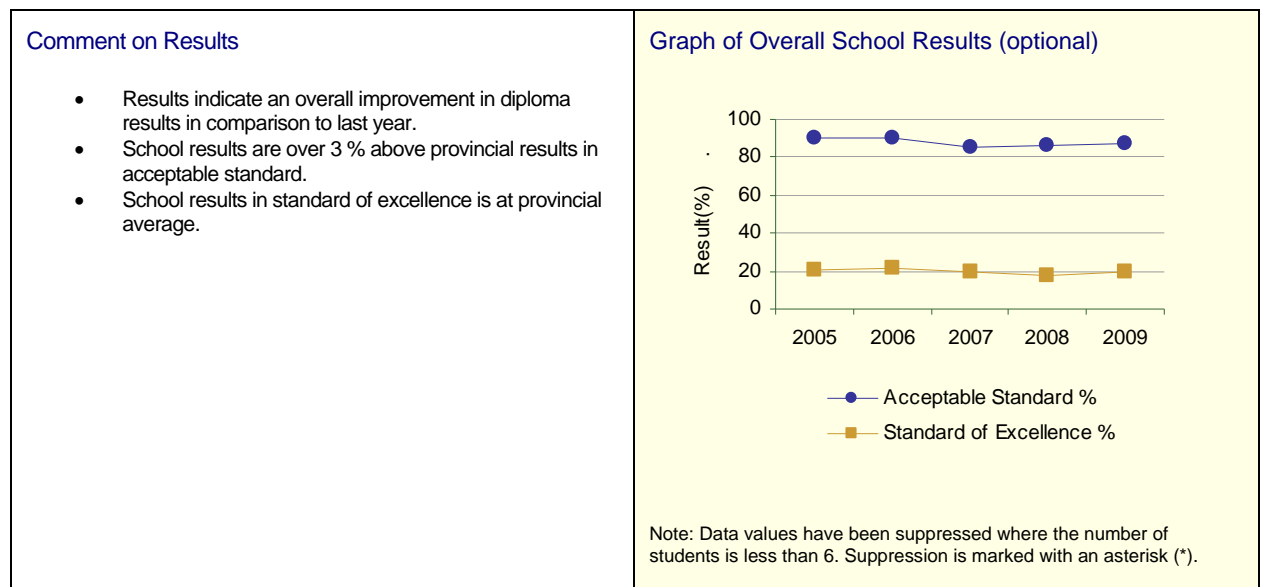
Chemistry 30 Old	School	89.4	27.3	94.9	41.5	96.1	35.2	94.7	38.6	n/a	n/a
	Authority	88.0	29.4	89.0	32.0	90.8	35.4	89.3	29.9	57.1	0.0
	Province	88.2	33.4	88.4	37.1	89.3	37.9	89.2	39.2	77.6	19.5
Chemistry 30	School	n/a	n/a	n/a	n/a	n/a	n/a	n/a	n/a	73.9	33.0
	Authority	n/a	n/a	n/a	n/a	n/a	n/a	n/a	n/a	71.1	24.9
	Province	n/a	n/a	n/a	n/a	n/a	n/a	n/a	n/a	76.3	27.7
Physics 30 Old	School	90.8	19.7	96.2	25.3	83.8	20.0	82.6	30.2	n/a	n/a
	Authority	80.7	15.8	87.8	25.9	85.2	20.4	78.0	23.8	30.0	0.0
	Province	84.2	27.8	84.4	30.0	86.1	29.3	85.7	32.0	74.4	25.6
Physics 30	School	n/a	n/a	n/a	n/a	n/a	n/a	n/a	n/a	84.1	24.4
	Authority	n/a	n/a	n/a	n/a	n/a	n/a	n/a	n/a	84.4	24.7
	Province	n/a	n/a	n/a	n/a	n/a	n/a	n/a	n/a	79.3	23.1
Science 30	School	92.7	29.3	91.5	17.0	94.7	15.8	94.7	13.2	89.7	20.5
	Authority	91.2	18.6	83.9	17.9	81.0	17.9	88.8	12.5	88.5	19.5
	Province	88.1	22.1	82.8	17.3	87.1	18.0	88.6	21.6	86.0	20.9

		Results (in Percentages)									
		2005		2006		2007		2008		2009	
		A	E	A	E	A	E	A	E	A	E
Overall	School	90.2	20.9	90.6	21.1	85.7	19.9	86.1	17.8	87.5	19.2
	Authority	85.3	18.3	85.6	18.1	83.2	17.0	83.6	16.1	86.1	17.0
	Province	85.5	21.2	84.2	20.7	84.8	20.9	84.4	19.4	84.4	19.1

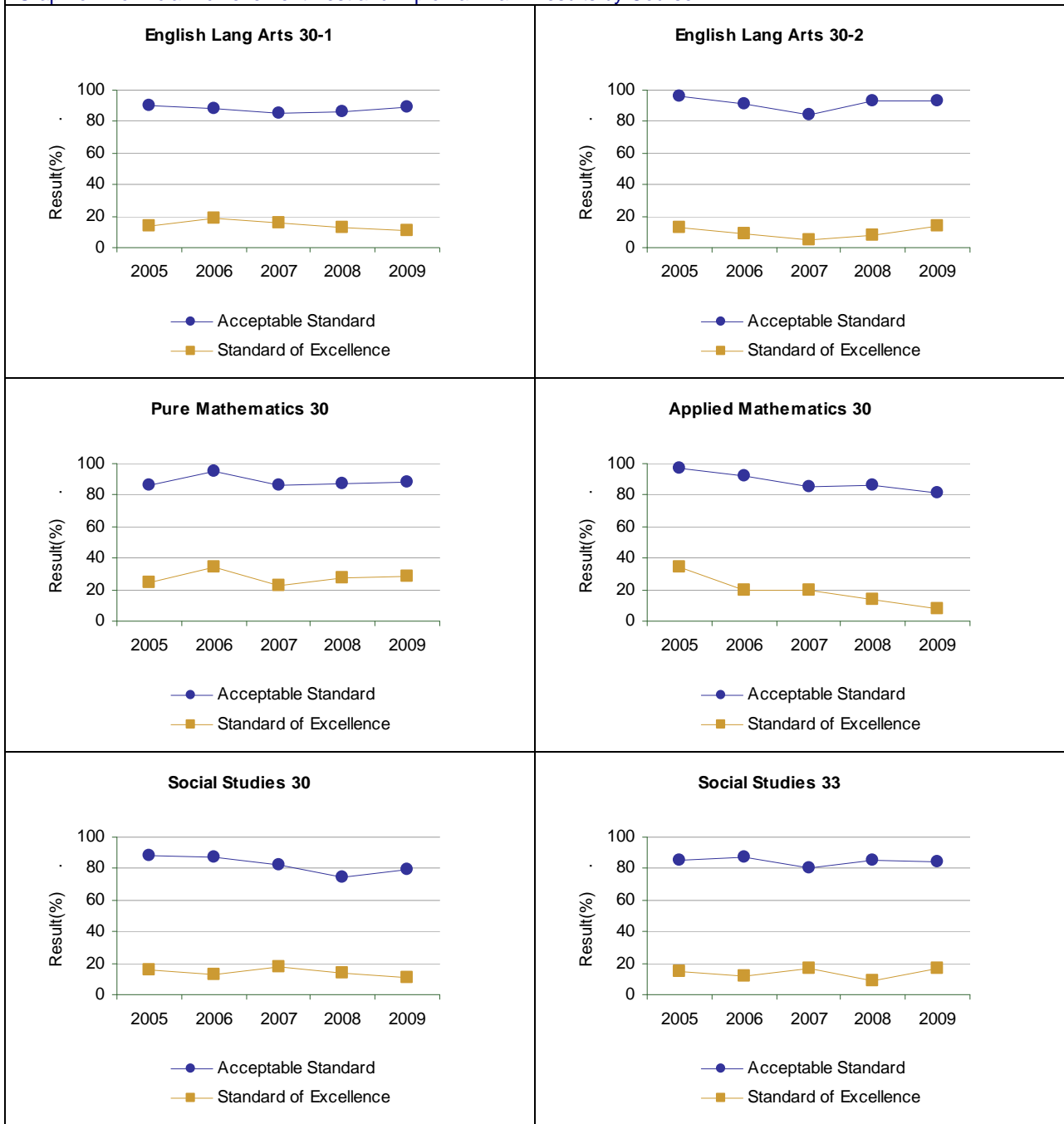
Note: Data values have been suppressed where the number of students is less than 6. Suppression is marked with an asterisk (*).

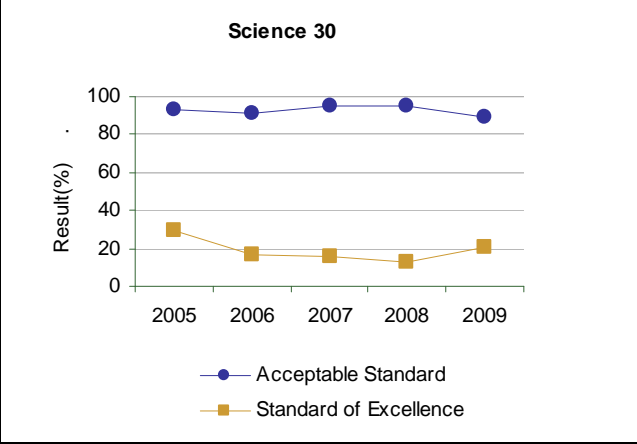
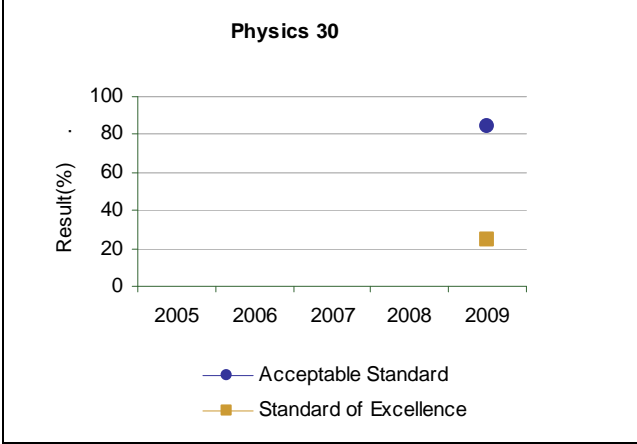
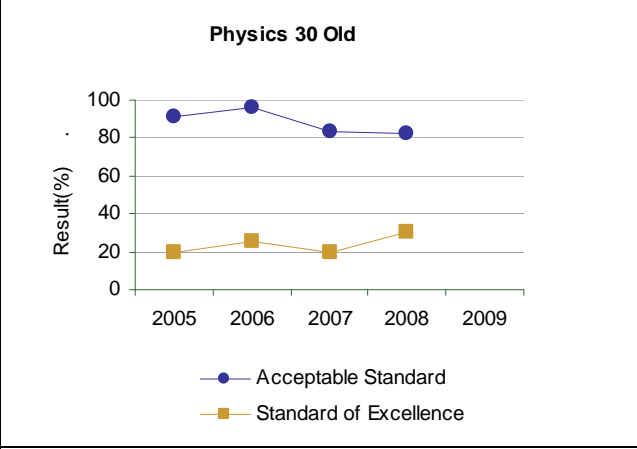
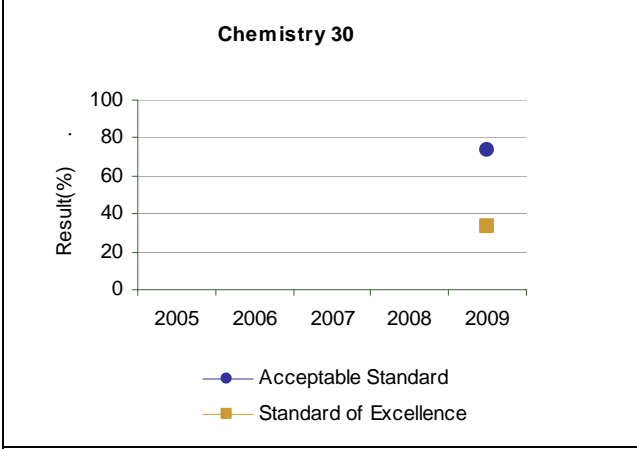
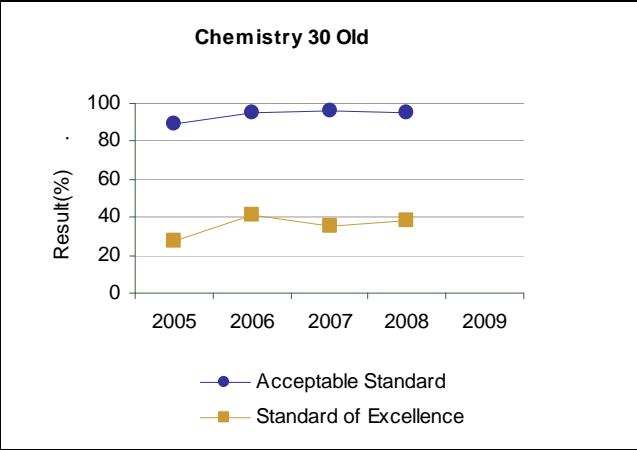
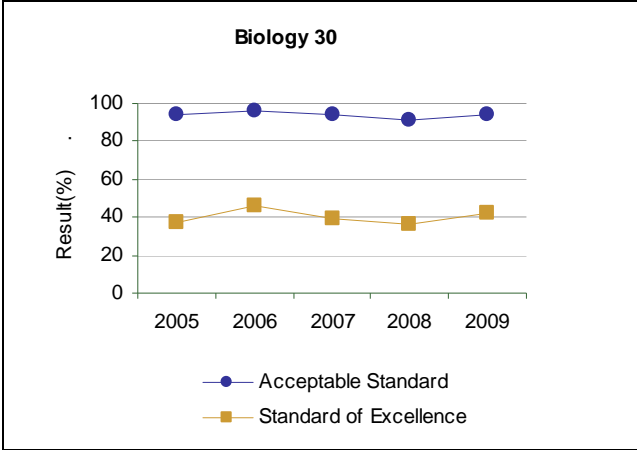
Aggregated Diploma results are based upon a weighted average of Acceptable or Excellence percent meeting standards. The weights are the number of students writing the Diploma Examination for each course.

** "A" = Acceptable; "E" = Excellence — the percentages achieving the acceptable standard include the percentages achieving the standard of excellence.



Graph of Provincial Achievement Test and Diploma Exam Results by Course





Diploma Exam Results Course By Course Summary With Measure Evaluation (optional)

		Hunting Hills High School						Alberta				
		Achievement	Improvement	Overall	2009		Prev 3 Yr Avg		2009		Prev 3 Yr Avg	
Course	Measure				N	%	N	%	N	%	N	%
English Lang Arts 30-1	Acceptable Standard	Low	Maintained	Issue	189	89.4	206	86.5	28,330	86.1	28,021	87.6
	Standard of Excellence	Low	Declined	Issue	189	10.6	206	15.4	28,330	12.3	28,021	17.9
English Lang Arts 30-2	Acceptable Standard	High	Maintained	Good	101	93.1	93	89.3	13,473	88.2	12,858	87.9
	Standard of Excellence	Very High	Improved	Excellent	101	13.9	93	7.4	13,473	8.5	12,858	8.9
Pure Mathematics 30	Acceptable Standard	High	Maintained	Good	194	88.7	171	89.9	22,197	82.1	22,435	81.7
	Standard of Excellence	Intermediate	Maintained	Acceptable	194	28.9	171	28.4	22,197	26.3	22,435	25.7
Applied Mathematics 30	Acceptable Standard	Intermediate	Declined	Issue	80	81.3	77	88.2	10,429	79.4	9,994	77.1
	Standard of Excellence	Low	Declined	Issue	80	7.5	77	17.7	10,429	13.5	9,994	11.5
Social Studies 30	Acceptable Standard	Low	Maintained	Issue	158	79.7	175	81.0	22,845	84.2	23,756	85.4
	Standard of Excellence	Low	Declined	Issue	158	10.8	175	14.8	22,845	21.4	23,756	23.3
Social Studies 33	Acceptable Standard	Intermediate	Maintained	Acceptable	88	84.1	97	84.3	15,101	85.6	15,045	84.5
	Standard of Excellence	High	Maintained	Good	88	17.0	97	12.2	15,101	20.2	15,045	19.1
Biology 30	Acceptable Standard	Very High	Maintained	Excellent	117	94.0	116	93.9	21,088	83.0	20,835	82.4
	Standard of Excellence	Very High	Maintained	Excellent	117	41.9	116	40.7	21,088	26.6	20,835	26.7
Science 30	Acceptable Standard	Intermediate	Maintained	Acceptable	39	89.7	41	93.7	4,476	86.0	3,721	86.2
	Standard of Excellence	Intermediate	Maintained	Acceptable	39	20.5	41	15.3	4,476	20.9	3,721	19.0

Note: Data values have been suppressed where the number of students is less than 6. Suppression is marked with an asterisk (*).

Too few jurisdictions offer Français 30 for an Achievement Evaluation to be calculated. However, the results from Français 30 are included in the aggregation of all Diploma courses. Achievement Evaluations for Physics 30 and Chemistry 30 are not calculated due to the change in the exams.

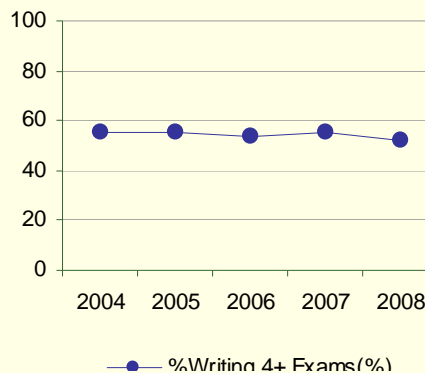
Outcome: Students demonstrate high standards in learner outcomes. (continued)

Performance Measure		Results (in percentages)				
		2004	2005	2006	2007	2008
Diploma examination participation rate: Percentages of students who have written four or more diploma exams by the end of their third year of high school.	School	55.1	55.2	53.5	55.0	52.1
	Authority	49.4	50.4	48.9	49.6	46.1
	Province	52.4	53.5	53.7	53.6	53.3

Comment on Results

- Results are at or above the provincial average year after year.
- We continue to encourage students to take multiple sciences to the grade 12 level which should improve results.

Graph of Overall School Results (optional)



Note: Data values have been suppressed where the number of respondents is less than 6. Suppression is marked with an asterisk (*).

Percentage of students writing 0 to 6 or more Diploma Examinations by the end of their 3rd year of high school (optional)

	Hunting Hills High School					Alberta				
	2004	2005	2006	2007	2008	2004	2005	2006	2007	2008
N	317	332	335	303	354	43,221	43,032	43,930	44,661	45,432
% Writing 0 Exams	16.1	14.0	15.0	14.5	16.6	18.3	18.1	17.8	18.0	18.4
% Writing 1+ Exams	83.9	86.0	85.0	85.5	83.4	81.7	81.9	82.2	82.0	81.6
% Writing 2+ Exams	80.1	83.9	82.6	82.9	79.4	77.9	78.3	78.5	78.6	78.0
% Writing 3+ Exams	67.3	70.2	67.4	65.4	64.2	64.1	65.6	65.6	65.6	64.9
% Writing 4+ Exams	55.1	55.2	53.5	55.0	52.1	52.4	53.5	53.7	53.6	53.3
% Writing 5+ Exams	31.1	30.2	30.1	31.9	31.1	33.9	34.5	34.6	34.7	34.3
% Writing 6+ Exams	9.6	6.7	9.4	7.7	10.4	12.8	12.8	13.0	13.2	12.7

Percentage of students writing 1 or more Diploma Examinations by the end of their 3rd year of high school, by course and subject. (optional)

	Hunting Hills High School					Alberta				
	2004	2005	2006	2007	2008	2004	2005	2006	2007	2008
N	317	332	335	303	354	43,221	43,032	43,930	44,661	45,432
English 30/30-1	54.6	53.9	56.7	55.4	55.1	53.4	54.4	54.7	54.5	53.8
English 33/30-2	25.9	29.5	25.7	27.1	24.3	24.4	23.7	23.5	23.6	24.0
Total of 1 or more English Diploma Exams	78.9	82.8	81.2	81.5	78.8	76.6	76.9	77.1	77.0	76.7
Social 30	45.7	48.2	53.4	52.8	55.1	47.8	49.1	49.5	49.3	48.1
Social 33	37.2	35.8	28.7	29.4	25.1	30.3	29.1	28.8	28.8	29.5
Total of 1 or more Social Diploma Exams	79.5	82.5	81.5	81.5	79.4	76.9	77.0	77.2	77.2	76.7
Math 30/Pure	43.2	44.6	40.3	44.6	42.9	39.5	41.1	41.9	41.7	41.1
Math 33/Applied	21.8	20.2	24.2	20.1	18.9	20.0	19.9	19.5	19.5	19.1
Total of 1 or more Math Diploma Exams	64.0	64.2	64.5	63.7	61.3	58.9	60.4	60.7	60.7	59.7
Biology 30	33.1	30.7	27.5	30.4	33.1	38.7	39.4	39.6	39.8	39.1
Chemistry 30	32.8	35.5	32.2	31.4	31.6	33.9	34.4	34.2	34.3	34.5
Physics 30	21.5	20.2	21.2	22.4	20.1	21.5	21.6	21.6	21.5	20.4
Science 30	12.3	12.0	14.3	12.2	10.5	6.7	7.0	7.0	7.0	7.4
Total of 1 or more Science Diploma Exams	58.0	59.6	56.4	56.8	53.7	55.5	56.6	56.7	56.5	56.1
Français 30	0.0	0.0	0.0	0.0	0.0	0.2	0.2	0.2	0.2	0.2
French Language Arts 30	0.0	0.0	0.0	0.0	0.0	2.3	2.4	2.7	2.7	2.7
Total of 1 or more French	0.0	0.0	0.0	0.0	0.0	2.5	2.6	2.9	2.9	2.9

Note:

Data values have been suppressed where the number of students is less than 6. Suppression is marked with an asterisk (*).

Results are based upon a cohort of grade 10 students who are tracked over time. The table shows the percentage of students in this cohort who complete diploma exams by the end of their third year of high school.

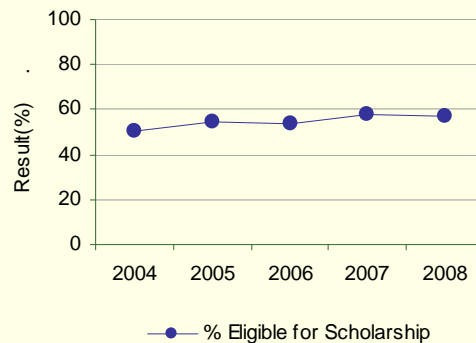
Outcome: Students demonstrate high standards in learner outcomes. (continued)

Performance Measure		Results (in percentages)				
		2004	2005	2006	2007	2008
Percentages of Grade 12 students who meet the Rutherford Scholarship eligibility criteria.	School	50.5	54.6	54.0	58.1	57.2
	Authority	51.3	51.2	53.9	52.6	52.3
	Province	52.9	54.6	56.1	56.8	57.3

Comment on Results

- Results are at the provincial average with gradual improvement over the past five years.

Graph of Overall School Results (optional)



Note: Data values have been suppressed where the number of respondents is less than 6. Suppression is marked with an asterisk (*).

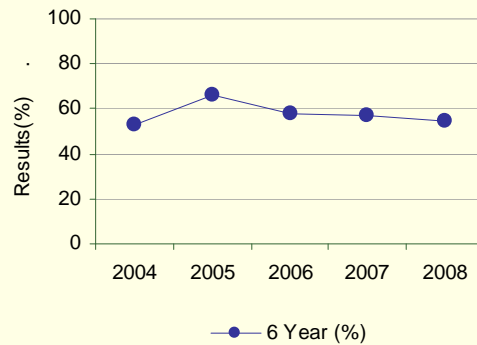
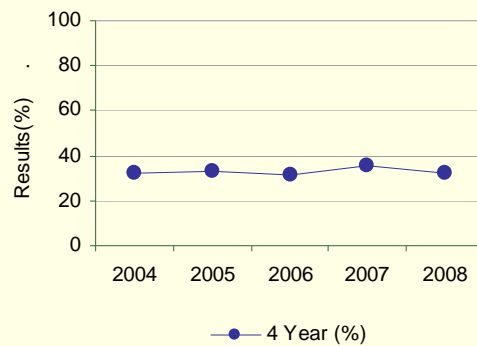
Outcome: Students are well prepared for lifelong learning.

Performance Measure			Results (in percentages)				
			2004	2005	2006	2007	2008
High school to post-secondary transition rate within four and six years of entering Grade 10.	Within 6 Years	School	53.2	66.4	57.5	57.2	54.6
		Authority	50.4	60.0	52.9	50.3	51.3
		Province	54.4	57.5	59.5	60.3	60.7
	Within 4 Years	School	32.6	33.4	31.7	35.4	32.0
		Authority	29.8	26.9	27.5	30.6	28.7
		Province	34.0	37.0	39.5	40.7	40.3

Comment on Results

- Transition rate has historically been below the provincial average.
- Continuing to develop dual credit opportunities with the Red Deer College to help improve transition rate.
- Increased resources have been allocated to career counseling services.
- Career event has been double in length and provided to all grade 10-12 students.
- Increased resources have been added to Advanced Placement and Registered Apprenticeship programs.

Graph of Overall School Results (optional)



Note: Data values have been suppressed where the number of respondents is less than 6. Suppression is marked with an asterisk (*).

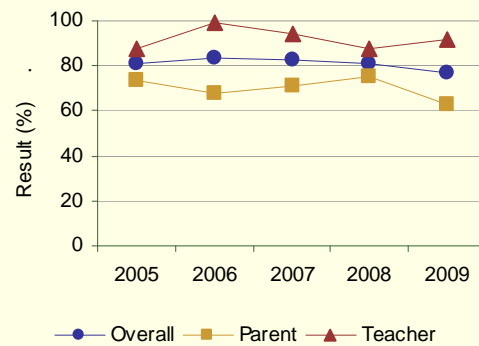
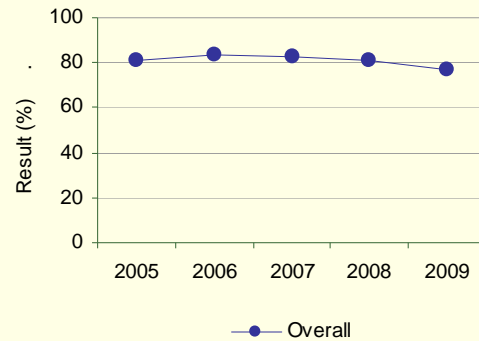
Outcome: Students are well prepared for lifelong learning. (continued)

Performance Measure			Results (in percentages)				
			2005	2006	2007	2008	2009
Percentage of teacher and parent satisfaction that high school graduates demonstrate the knowledge, skills and attitudes necessary for lifelong learning.	Overall (required)	School	80.8	83.5	82.9	81.3	77.1
		Authority	67.4	70.2	70.2	70.8	68.1
		Province	64.4	66.1	65.6	66.7	67.4
	Teacher (optional)	School	87.9	98.9	94.6	87.5	91.7
		Authority	75.9	78.2	76.4	78.5	76.0
		Province	73.7	74.2	74.1	73.8	74.0
	Parent (optional)	School	73.7	68.1	71.2	75.0	62.5
		Authority	58.9	62.1	64.0	63.0	60.2
		Province	55.1	57.9	57.1	59.5	60.8

Comment on Results

- Results indicate a decline in parent satisfaction with a rate of only 62.5 % satisfaction by grade 10 parents
- 84% of parents of grade 9 and 12 students indicated satisfaction on the District survey.
- Overall results are 10 % above the provincial results.

Graph of Overall School Results (optional)



Note: Data values have been suppressed where the number of respondents is less than 6. Suppression is marked with an asterisk (*).

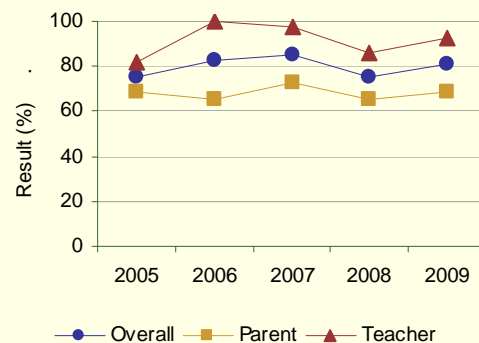
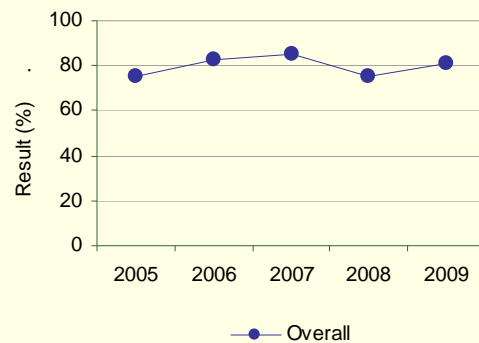
Outcome: *Students are well prepared for employment.*

Performance Measure		Results (in percentages)					
		2005	2006	2007	2008	2009	
Percentages of teachers and parents who agree that students are taught attitudes and behaviours that will make them successful at work when they finish school.	Overall (required)	School	75.1	82.7	85.0	75.6	80.7
		Authority	78.0	79.3	83.0	82.8	80.3
		Province	74.9	77.0	77.1	80.1	79.6
	Teacher (optional)	School	81.8	100.0	97.3	85.7	92.6
		Authority	90.7	92.3	92.9	92.1	88.1
		Province	89.1	89.4	89.2	89.3	88.9
	Parent (optional)	School	68.4	65.4	72.7	65.4	68.8
		Authority	65.4	66.4	73.2	73.4	72.5
		Province	60.8	64.6	65.1	70.9	70.2

Comment on Results

- Results indicate an improvement over last year.
- Overall results are above provincial results.

Graph of Overall School Results (optional)



Note: Data values have been suppressed where the number of respondents is less than 6. Suppression is marked with an asterisk (*).

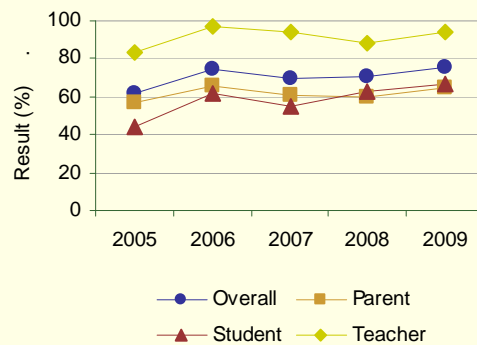
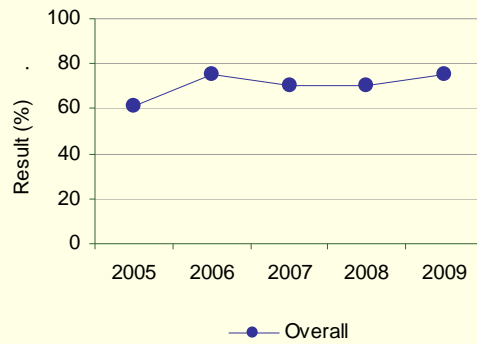
Outcome: Students model the characteristics of active citizenship.

Performance Measure			Results (in percentages)				
			2005	2006	2007	2008	2009
Percentages of teachers, parents and students who are satisfied that students model the characteristics of active citizenship.	Overall (required)	School	61.5	75.0	70.0	70.6	75.1
		Authority	75.3	78.0	79.3	80.2	80.0
		Province	75.3	76.8	76.6	77.9	80.3
	Teacher (optional)	School	83.0	97.4	94.0	88.6	94.0
		Authority	91.9	94.0	93.9	94.0	93.8
		Province	89.5	90.3	89.9	90.6	91.8
	Parent (optional)	School	57.1	65.5	61.1	60.2	64.4
		Authority	72.4	70.9	74.8	74.8	75.6
		Province	70.3	72.4	72.6	74.7	77.4
	Student (optional)	School	44.4	62.0	54.8	62.9	67.0
		Authority	61.6	69.2	69.1	71.8	70.7
		Province	66.1	67.5	67.1	68.5	71.8

Comment on Results

- Results show continuous improvement over the past 5 years.
- 92% of parents of grade 9 and twelve students are satisfied with the overall behavior of students. (based on District survey)
- Student results show significant improvement over the five year period.

Graph of Overall School Results (optional)



Note: Data values have been suppressed where the number of respondents is less than 6. Suppression is marked with an asterisk (*).

Goal Three: Highly Responsive and Responsible Jurisdiction

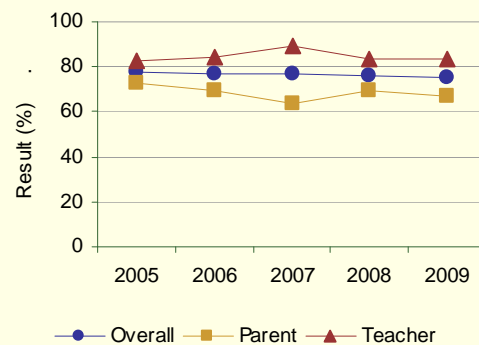
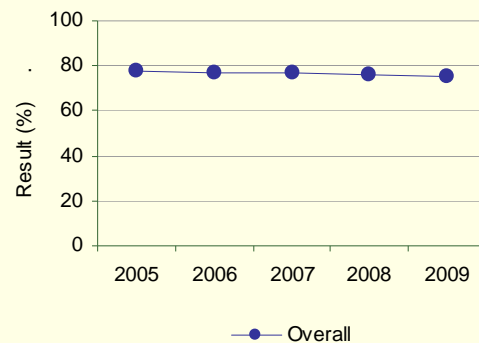
Outcome: The authority demonstrates effective working relationships.

Performance Measure		Results (in percentages)					
		2005	2006	2007	2008	2009	
Percentage of teachers and parents satisfied with parental involvement in decisions about their child's education.	Overall (required)	School	77.6	77.0	76.5	76.3	75.1
		Authority	80.2	80.8	81.4	81.3	79.1
		Province	76.1	77.9	77.5	78.2	80.1
	Teacher (optional)	School	82.3	84.7	89.2	83.5	83.3
		Authority	90.1	88.6	89.1	89.9	87.4
		Province	87.0	87.6	87.1	87.5	88.0
	Parent (optional)	School	72.8	69.3	63.8	69.1	66.8
		Authority	70.3	73.0	73.7	72.6	70.7
		Province	65.2	68.1	67.9	69.0	72.2

Comment on Results

- Results are below the provincial standards indicating this to be an area requiring attention.
- Results would be comparable to most other large high schools in the province.

Graph of Overall School Results (optional)



Note: Data values have been suppressed where the number of respondents is less than 6. Suppression is marked with an asterisk (*).

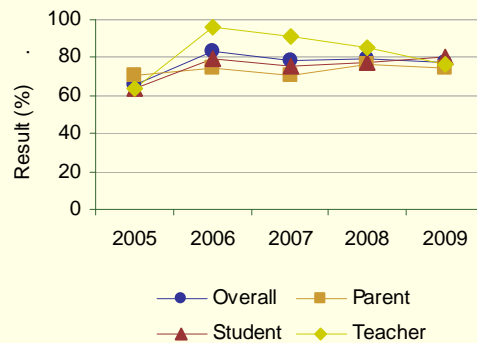
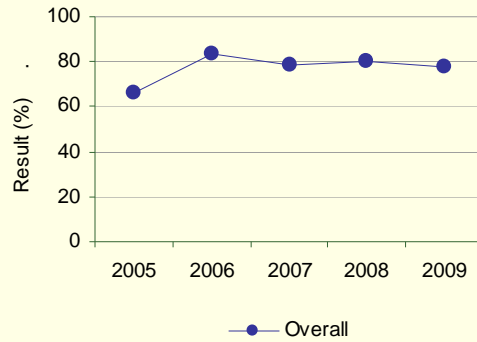
Outcome: The authority demonstrates leadership and continuous improvement.

Performance Measure		Results (in percentages)					
		2005	2006	2007	2008	2009	
Percentages of teachers, parents and students indicating that their school and schools in their jurisdiction have improved or stayed the same the last three years.	Overall (required)	School	65.8	83.4	78.9	79.8	77.4
		Authority	76.3	81.4	81.1	83.1	80.0
		Province	73.9	76.8	76.3	77.0	79.4
	Teacher (optional)	School	63.6	95.6	91.4	85.2	76.5
		Authority	76.3	82.4	78.0	81.5	75.9
		Province	73.1	75.5	74.5	75.6	78.2
	Parent (optional)	School	70.2	75.0	70.1	76.3	75.0
		Authority	75.8	79.4	82.0	82.2	79.6
		Province	70.9	75.4	75.1	75.9	78.1
	Student (optional)	School	63.6	79.7	75.2	77.9	80.8
		Authority	76.7	82.5	83.3	85.6	84.4
		Province	77.9	79.4	79.3	79.5	81.8

Comment on Results

- Historically the overall results are at or above the provincial averages.
- 2009 results indicate a decline with all groups except students. Student results for 2009 are at the highest level in five years.

Graph of Overall School Results (optional)



Note: Data values have been suppressed where the number of respondents is less than 6. Suppression is marked with an asterisk (*).

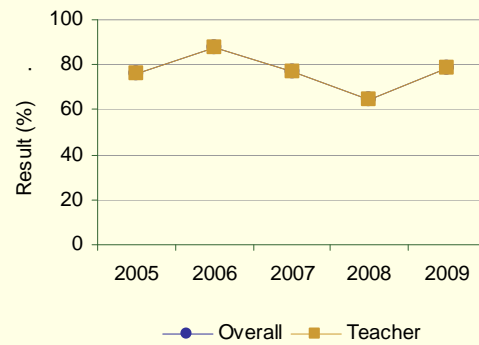
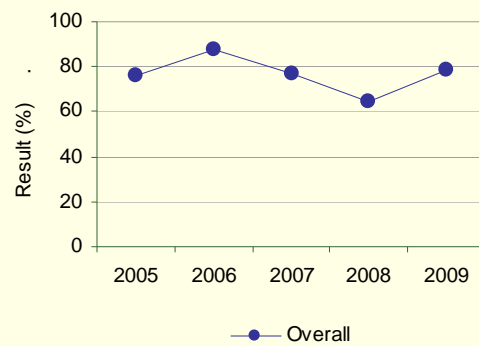
Outcome: The authority demonstrates leadership and continuous improvement. (continued)

Performance Measure			Results (in percentages)				
			2005	2006	2007	2008	2009
The percentage of teachers reporting that in the past 3-5 years the professional development and in-servicing received from the school authority has been focused, systematic and contributed significantly to their ongoing professional growth.	Overall (required)	School	76.3	87.2	76.6	64.2	78.4
		Authority	87.1	91.3	82.7	86.4	85.5
		Province	76.5	78.2	78.8	80.4	81.5
	Teacher (optional)	School	76.3	87.2	76.6	64.2	78.4
		Authority	87.1	91.3	82.7	86.4	85.5
		Province	76.5	78.2	78.8	80.4	81.5

Comment on Results

- The last three years indicate concern with the level of professional development provided by the School District.

Graph of Overall School Results (optional)



Note: Data values have been suppressed where the number of respondents is less than 6. Suppression is marked with an asterisk (*).

School Council reviewed the results document and provided input for the comments section.

School Summary School Summary

ALL SUBJECTS

School:

4433 - Hunting Hills High School

Jurisdiction:

3070 - Red Deer Public School District No. 104

Total Number of FTE Teacher Assistants:

16.0

Number of FTE Teacher Assistants assigned to students with special needs:

16.0

	K to 3			4 to 6			7 to 9			10 to 12		
	2007/08	2008/09	2009/10	2007/08	2008/09	2009/10	2007/08	2008/09	2009/10	2007/08	2008/09	2009/10
Average Class Size							25.3	26.4	26.5	25.9	25.0	26.1
Number of Students with Severe Disabilities per class							0.2	0.8	1.0	0.8	0.8	0.7
Number of Mild/Moderate Students per class							1.0	1.8	1.1	0.8	1.1	0.9
Number of Gifted/Talented Students per class							1.0	0.1				
Number of ESL Students per class							0.3	0.2	0.3	0.6	0.8	0.5
Smallest Class							9.0	3.0	5.0	3.0	7.0	3.0
Largest Class							35.0	56.0	43.0	58.0	80.0	80.0

Distribution of Class Sizes - %	K to 3			4 to 6			7 to 9			10 to 12		
	2007/08	2008/09	2009/10	2007/08	2008/09	2009/10	2007/08	2008/09	2009/10	2007/08	2008/09	2009/10
1 to 5								1.1	1.1	0.6		2.0
6 to 10							2.6	3.4	5.3	5.2	5.8	4.6
11 to 15							7.8	10.1	6.3	4.5	9.6	8.6
16 to 20							11.7	7.9	4.2	11.0	12.2	9.2
21 to 25							15.6	14.6	15.8	19.5	17.3	16.4
26 to 30							42.9	27.0	34.7	33.8	28.8	25.7
31 to 35							19.5	27.0	27.4	18.8	23.7	26.3
36 to 40								6.7	4.2	5.2	0.6	5.9
Over 40								2.2	1.1	1.3	1.9	1.3

Distribution of Class Sizes - #	K to 3			4 to 6			7 to 9			10 to 12		
	2007/08	2008/09	2009/10	2007/08	2008/09	2009/10	2007/08	2008/09	2009/10	2007/08	2008/09	2009/10
1 to 5								1	1	1		3
6 to 10							2	3	5	8	9	7
11 to 15							6	9	6	7	15	13
16 to 20							9	7	4	17	19	14
21 to 25							12	13	15	30	27	25
26 to 30							33	24	33	52	45	39
31 to 35							15	24	26	29	37	40
36 to 40								6	4	8	1	9
Over 40								2	1	2	3	2

Average by Subject Category	K to 3			4 to 6			7 to 9			10 to 12		
	2007/08	2008/09	2009/10	2007/08	2008/09	2009/10	2007/08	2008/09	2009/10	2007/08	2008/09	2009/10
Language Arts English/French							27.3	29.3	27.1	26.1	26.7	25.4
Mathematics							26.2	25.9	27.1	29.0	27.9	25.8
Science							26.6	25.3	26.6	28.0	26.9	26.3
Social Studies							26.2	31.9	30.1	29.5	30.8	26.4
Health							25.2	31.0	30.4			
Physical Education							30.0	32.1	27.5	31.3	27.1	29.5
Art							17.7	25.0	25.0	20.0	22.0	30.3
Music							14.7	16.8	21.5	27.0	54.5	49.0
Drama										25.0	26.0	22.0
Second Languages							26.3	29.3	28.0	21.5	20.8	18.7
Religious Instruction/Studies												
Environmental and Outdoor Education												
Social Science										15.0	26.5	28.0
Career and Technology Studies							21.7	23.6	24.3	22.2	19.9	21.3
Knowledge and Employability												
Special Education								11.0	7.3	8.0	9.0	
Local Developed Course							21.0	21.5	26.3	22.8	20.4	27.8
Other										45.0		
Career and Life Management										25.0	28.3	27.0
Biology										26.8	24.9	30.3
Chemistry										27.2	25.5	26.3
Physics										30.3	23.3	29.0

Note: 3/4 combined classes are included in the Gr. 4 to 6 average
 6/7 combined classes are included in the Gr. 7 to 9 average
 9/10 combined classes are included in the Gr. 10 to 12 average
 Special Education classes are included
 Team taught classes are reflected as an instructional PTR size (i.e., a class of 50 with two teachers would be reported as two classes of 25).
 Colony/hunter schools have been excluded
 Outreach/alternative schools have been excluded
 Virtual/Home Ed/Distance Ed programs have been excluded