

The Mission of the
Red Deer Public School District

*Striving for Excellence by inspiring learning
and nurturing hope in every student.*



Board Policy 1.01.05—Core Values:

The following core values shall be embraced, honored and protected by the Red Deer Public School District and shall guide the discussion, decisions and actions of all who work and serve in the District:

1. **Inclusion** - We celebrate diversity and ensure that our schools are open and accessible to every student.
2. **Democracy** - We acknowledge that our schools belong to the community. We believe that they are models of civil democracy, demonstrating the importance of interdependent relationships in developing healthy communities. We practice democratic principles in our actions and decision-making.
3. **Local Autonomy** - We represent the unique beliefs, values and aspirations of the local community, thus balancing local interests with the direction provided by the provincial government.
4. **Integrity** - We model integrity, as well as trust and transparency, in our actions.
5. **Respect** - We demonstrate respect toward all.
6. **Care** - We care for the needs of others, especially the least advantaged.
7. **Service** - We display an attitude of service in our interactions with others.
8. **Collaboration** - We collaborate with one another and with many partners in meeting the needs of students.
9. **Commitment to Improvement** - We are committed to continuous improvement.

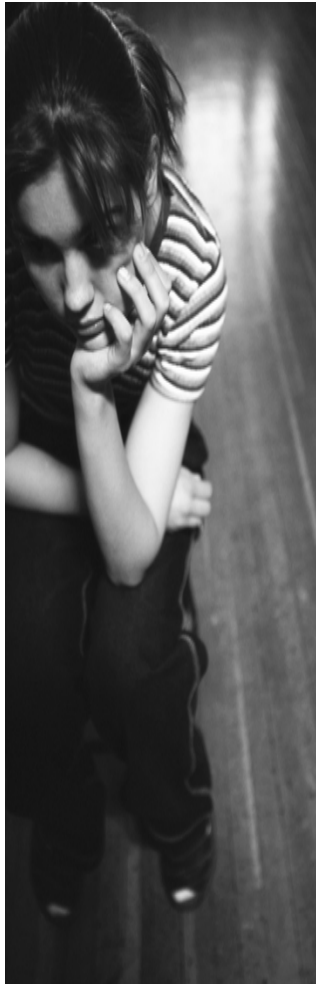
Student Threat Assessment

Parent Information Brochure

Red Deer Public Schools is committed to providing a safe and caring school environment. The Board of Trustees recognizes that it has the responsibility to ensure the safety of its students. Every effort will be made to provide students with a safe learning environment.

Intervention Services
Red Deer Public Schools

Student Threat Assessment



What behaviours initiate a Student Threat Assessment?

A Student Threat Assessment may be initiated when, in the judgment of the principal, behaviours include, but are not limited to: serious violence, written/verbal threats to harm others and possession of weapons.

Duty to Report

To keep school communities safe and caring, staff, parents and students have a responsibility to report threat related behaviours.

What is a threat?

A threat is an expression of intent to do harm or act out violently against someone or something. Threats may be verbal, written, drawn, posted on the Internet or made by gesture. Threats will be taken seriously and investigated.

What is a Threat Assessment Team?

Each school has a Threat Assessment Team which is multi-disciplinary. The team may include the principal, vice principal, designated Central Services personnel, social worker, psychologist, counselor and/or police.

What are the purposes of a Student Threat Assessment?

The purposes of a Student Threat Assessment are:

- to ensure the safety of students, staff, parents and others.
- to ensure a full understanding of the context of the threat.
- to begin to understand the factors that contribute to the threat maker's behaviour.
- to be proactive in developing an intervention plan that addresses the emotional and physical safety of the threat maker.
- to promote emotional and physical safety.

What happens in a Student Threat Assessment?

All threat making behaviour(s) by a student(s) shall be reported to the principal who will determine the actions to be taken.

Interviews may be held with the student(s), the threat maker, outside agencies, parents and staff to determine the level of risk and develop an appropriate response to the incident.

Intervention plans may be developed and shared with parents, staff and students as required.

Can I refuse to be a part of the Student Threat Assessment process?

It is important for all parties to engage in the process. If for some reason there is a reluctance to participate in the process, by the threat maker or parent/guardian, the threat assessment process will continue in order to ensure a safe and caring learning environment.